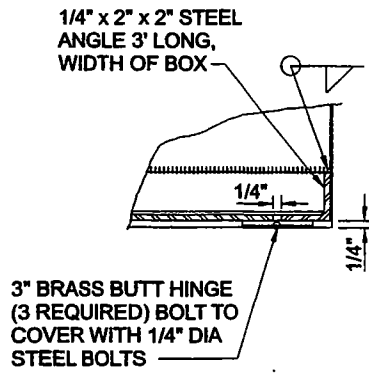
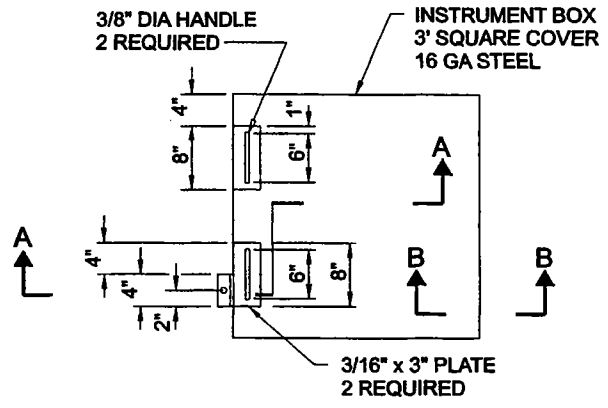


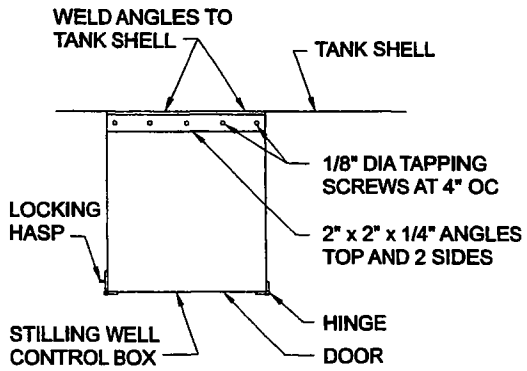
TANK - STILLING WELL DETAILS



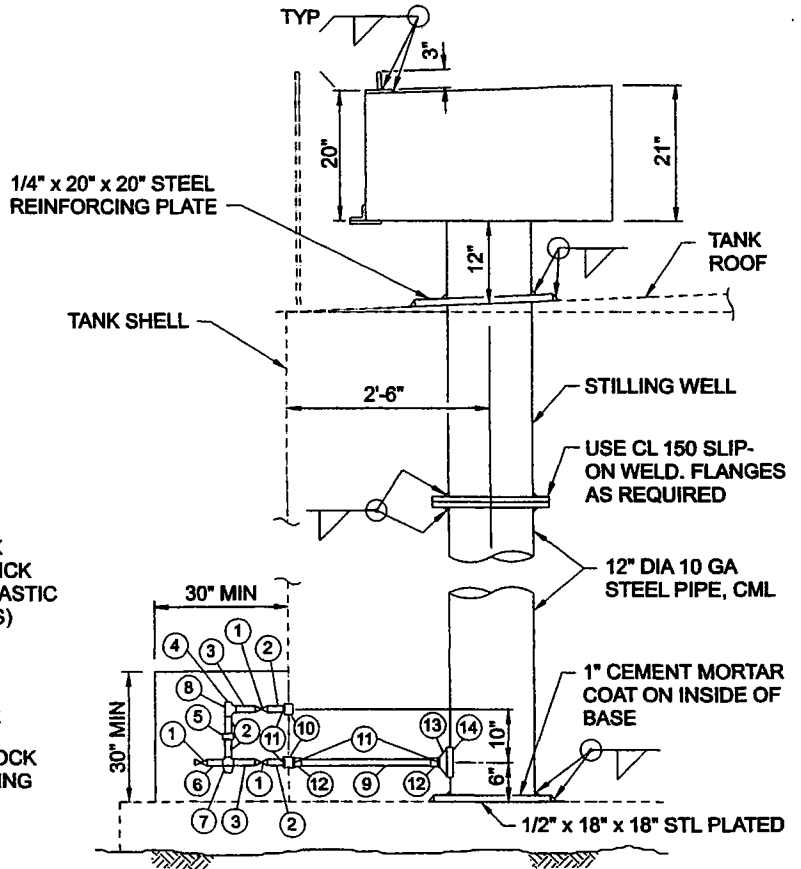
**SECTION B-B**  
NTS



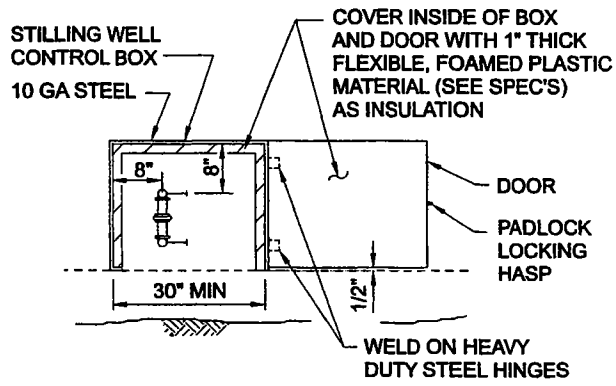
**PLAN**  
NTS



**PLAN**  
NTS



**ELEVATION**  
NTS



**ELEVATION**  
NTS

LOS ANGELES COUNTY WATERWORKS DISTRICTS

DEPARTMENT OF PUBLIC WORKS

STANDARD PLAN

W-29

APPROVED

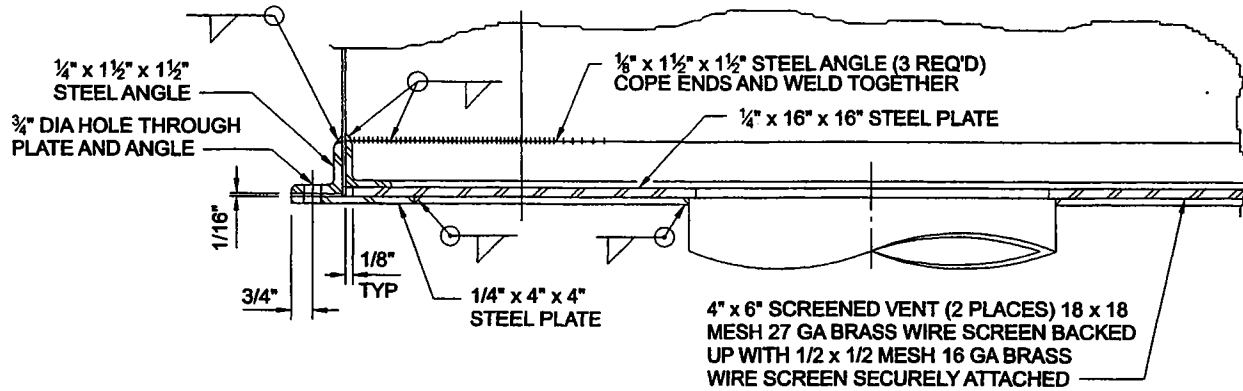
*[Signature]*  
ASSISTANT DEPUTY DIRECTOR

APRIL 2004

DATE

SHEET 1 OF 2

TANK - STILLING WELL DETAILS (CONTINUED)



SECTION A-A  
NTS

**GENERAL NOTES:**

1. WELD 1/4" x 4" x 6" STEEL PLATE ON TANK ROOF IN TWO PLACES, WHERE INSTRUMENT BOX COVER CONTACTS TANK ROOF, WHEN COVER IS OPEN.
2. PAINT INTERIOR OF COUNTERWEIGHT TUBE, AND EXTERIOR OF STILLING WELL BELOW ROOF THE SAME AS THE TANK INTERIOR.
3. PAINT INTERIOR AND EXTERIOR OF INSTRUMENT BOX, EXTERIOR OF COUNTERWEIGHT TUBE AND REINFORCING PLATE, AND EXTERIOR OF STILLING WELL ABOVE ROOF, THE SAME AS THE EXTERIOR OF THE TANK SHELL.
4. IMPORTANT FOR FABRICATOR TO NOTE LOCATION OF HINGE IN SECTION B-B.

**MATERIAL LIST**

ITEM NO.	DESCRIPTION
①	1" BALL VALVE, BRONZE
②	1" x 3" NIPPLE, BRASS
③	1" x 2" NIPPLE, BRASS
④	1" PLUG, BRASS
⑤	1" x 1" PIPE UNION, BRASS
⑥	1" x 1" NIPPLE, BRASS
⑦	1" CROSS, BRASS
⑧	1" TEE, BRASS
⑨	1" DIA COPPER TUBING, TYPE K, SOFT
⑩	1 1/2" STEEL COUPLING, BRONZE
⑪	1 1/2" x 1" DIELECTRIC BUSHING
⑫	1" BRONZE COUPLING, COPPER - IP
⑬	4" x 1 1/2" REDUCER, BRONZE
⑭	4" WELDING COUPLING, BRONZE

LOS ANGELES COUNTY WATERWORKS DISTRICTS

DEPARTMENT OF PUBLIC WORKS

STANDARD PLAN

W-29

APPROVED

*Michael Keal*  
ASSISTANT DEPUTY DIRECTOR

APRIL 2004

DATE

SHEET 2 OF 2