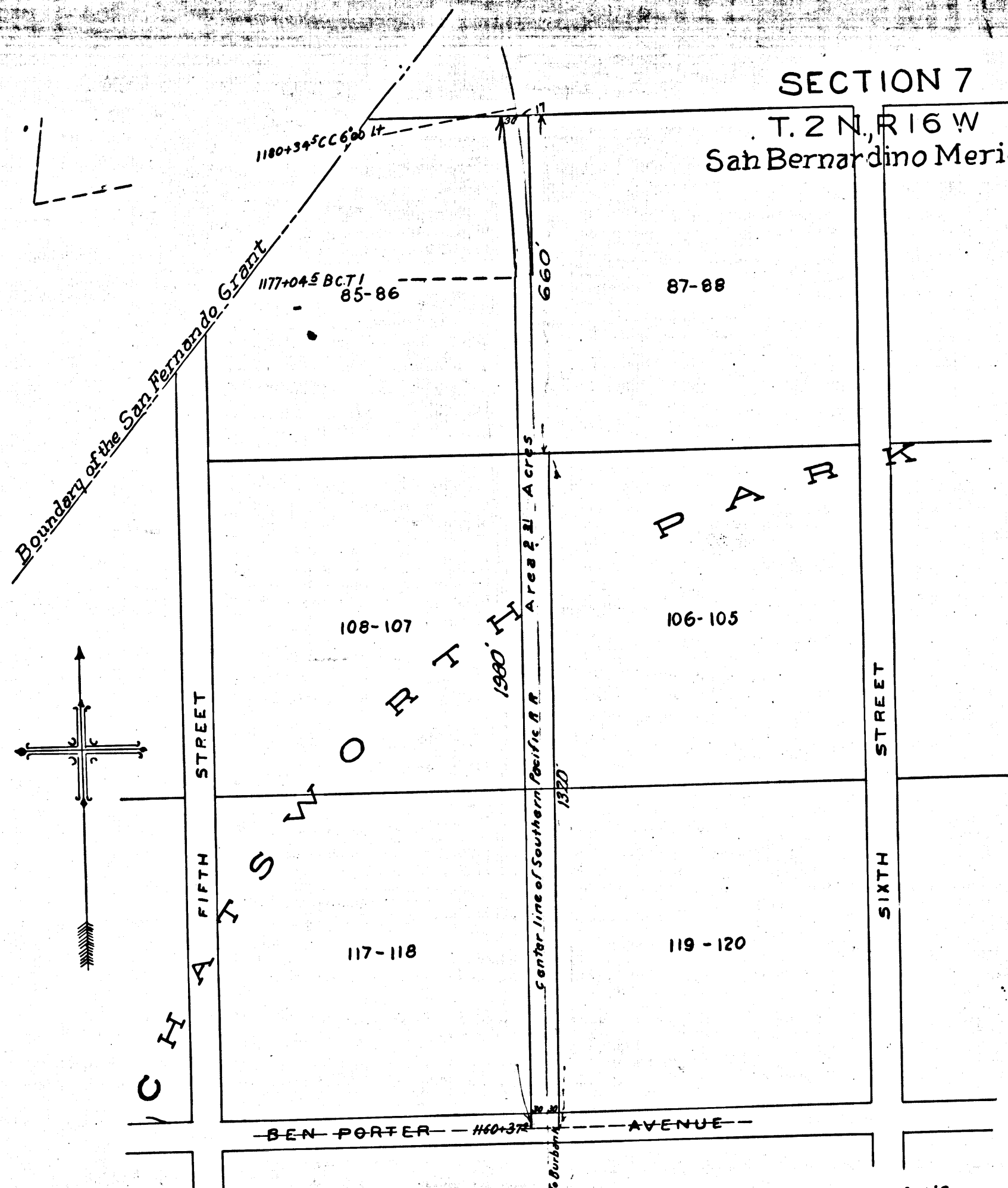
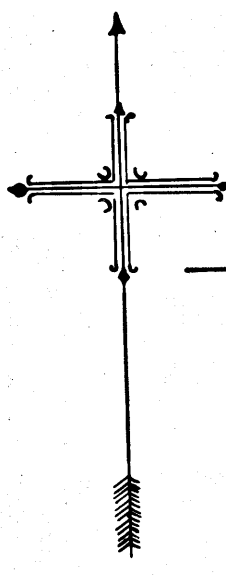


SECTION 7  
T. 2 N., R. 16 W  
San Bernardino Meridian



C.F. 413



S.P. RR Co vs J.W. Hendrick ADMR  
Condemnation  
Filed Sept 29 1904  
Found for S.P. RR Co  
Final Judgment for Plff.  
" " Sep 26/1904  
" " Book 122-238  
Per this Map as noted.  
Sit. 61

Plat of a Portion of CHATSWORTH PARK Los Angeles Co Calif.  
Scale; 1 inch = 200 feet.  
The tract to be condemned is shown colored Yellow.

