

City of Los Angeles vs. Frank W. Hunt et al.
Filed Jan 4-1905

Cancelled
Dismissed Feb 4, 1911, 10-06
See Judgt. Book, 220-222.
Ord. 13877, MS.
Abstract of Ord. 13877, MS.

50
11
9

MAP
Showing land sought to be condemned
for the opening of
DARWIN AVENUE
between
DOUILLARD STREET and MAIN STREET
IN THE
CITY OF LOS ANGELES, CAL.
In accordance with Ordinance No. 9158 (New Series)
Scale 30 feet to one inch.

April 1904

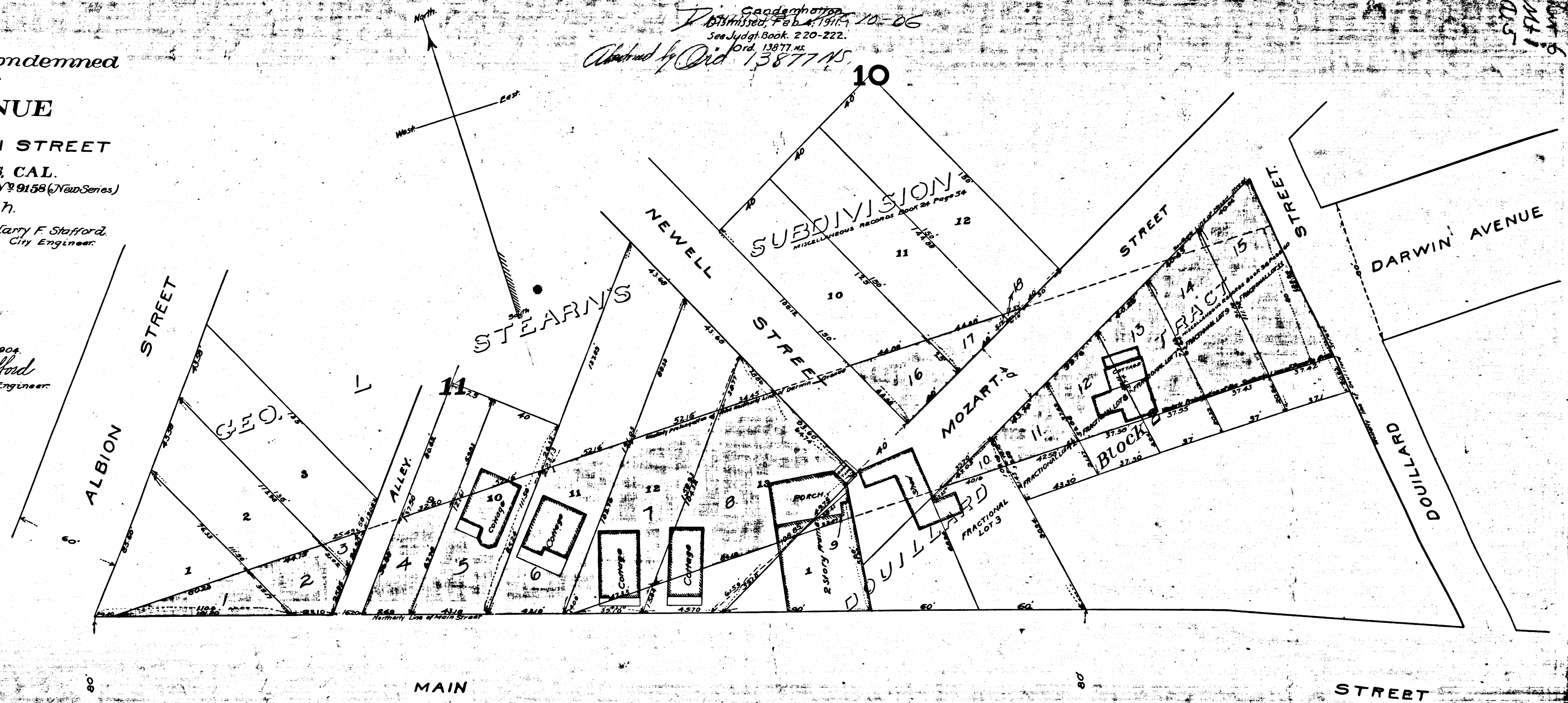
Harry F. Stafford,
City Engineer.

Note: Red tint shows land
sought to be condemned.

Map Approved April 30th 1904

Harry F. Stafford
City Engineer.

EXHIBIT C



C.F. 416