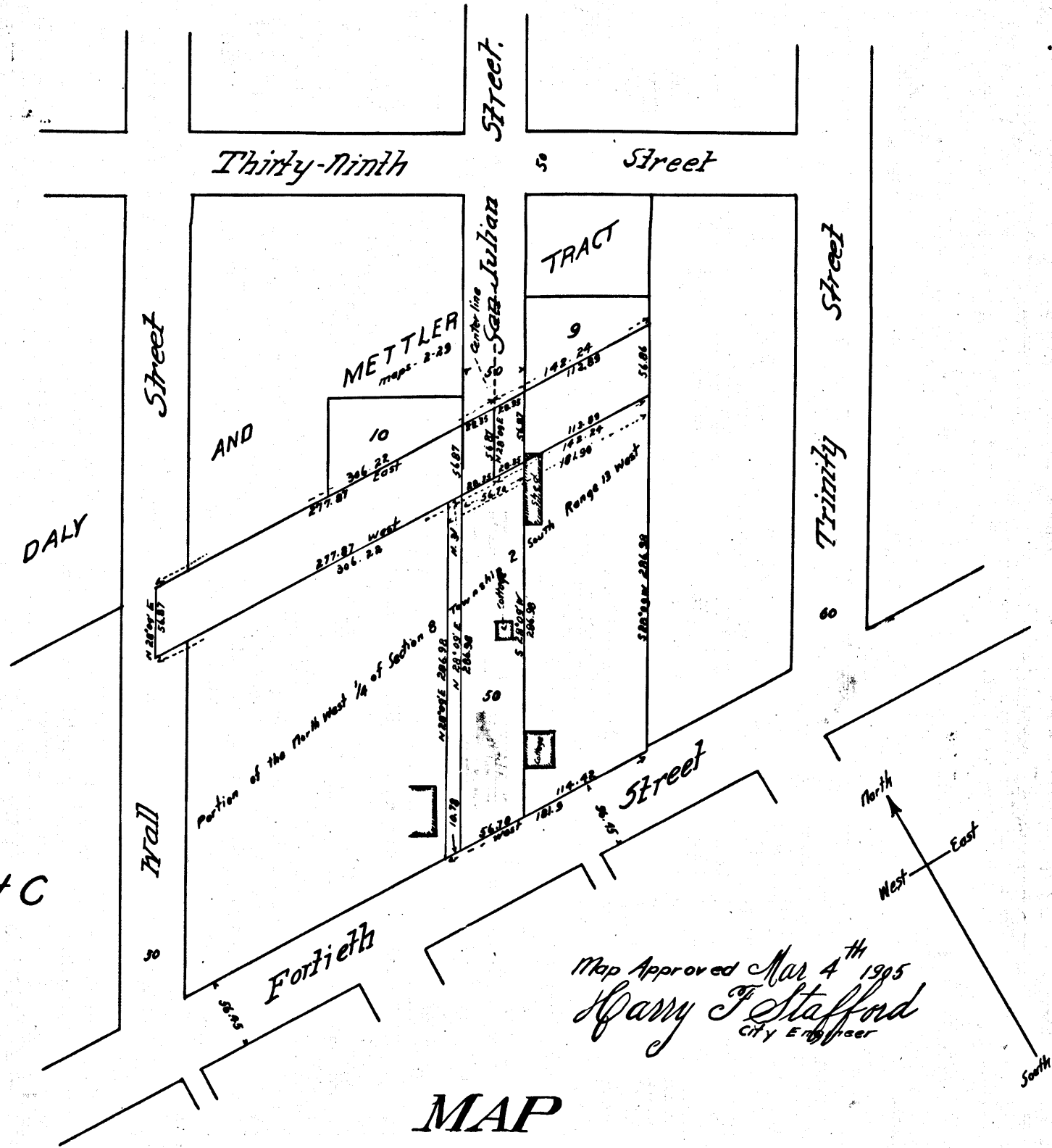


Exhibit C



MAP
 SHOWING LAND SOUGHT TO BE CONDEMNED
 for the OPENING of
SAN JULIAN STREET
 BETWEEN
Thirty-Ninth and Fortieth Streets
 in the
 CITY OF LOS ANGELES CAL
 In accordance with Ordinance No 10,134 (New Series)
 Scale 1"=100'
 Harry F. Stafford City Engineer Mar 2 1905
 Note Land to be condemned shown colored red

City of Los Angeles vs A.E. Inglehart et al

Filed Mar 4, 1905

Found for Plaintiff

See D:2734-292 D:7-264

A.48

C.F. 425