

71x 40

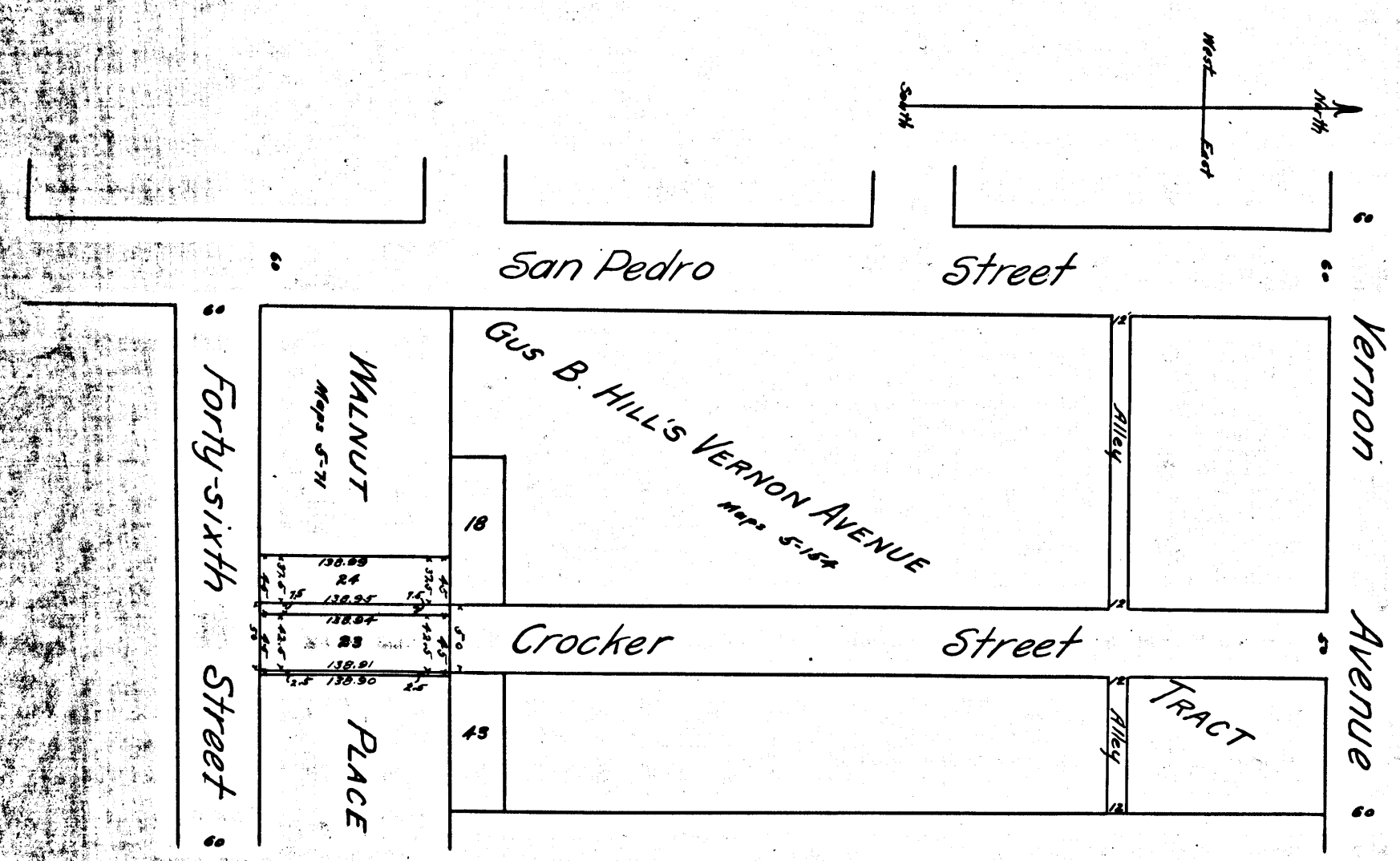
MAP
 Showing land sought to be condemned for the opening of
CROCKER STREET
 from
 the southerly line of Gus B. Hill's Vernon Avenue Tract
 to
 the northerly line of Forty-sixth Street
 in the

City of Los Angeles, Cal.
 Under Ordinance No 10922 (New Series)
 Harry F. Stafford, City Engineer, July 27 1905
 Scale: 1"=100'

Map Approved July 27 1905
Harry F. Stafford
 City Engineer

Note: Portion colored red indicates land to be condemned.

Sec II:7-260



City of Los Angeles
 J.F. Farley et al.
 EXHIBIT C
 Filed July 31-1905

C.F. 437

A 13 1/2