

MAP
 Showing land sought to be condemned
 for the opening of
GRAND AVENUE

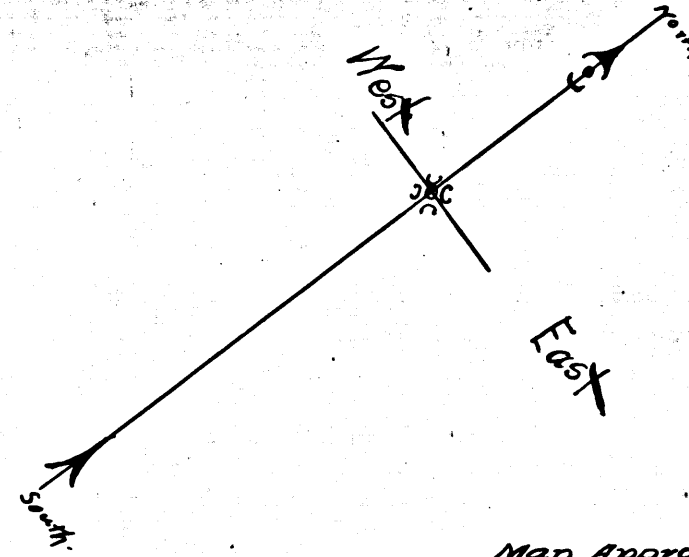
FROM
 TEMPLE STREET TO CALIFORNIA STREET
 IN THE
 City of Los Angeles
 In accordance with Ordinance No. 12027 (New Series)
 Scale 30 feet to one inch.

February 1906.

Harry F. Stafford
 City Engineer.

NOTE, RED TINT SHOWS LAND SOUGHT
 TO BE CONDEMNED.

Judgment favor of City March 26th 1907.

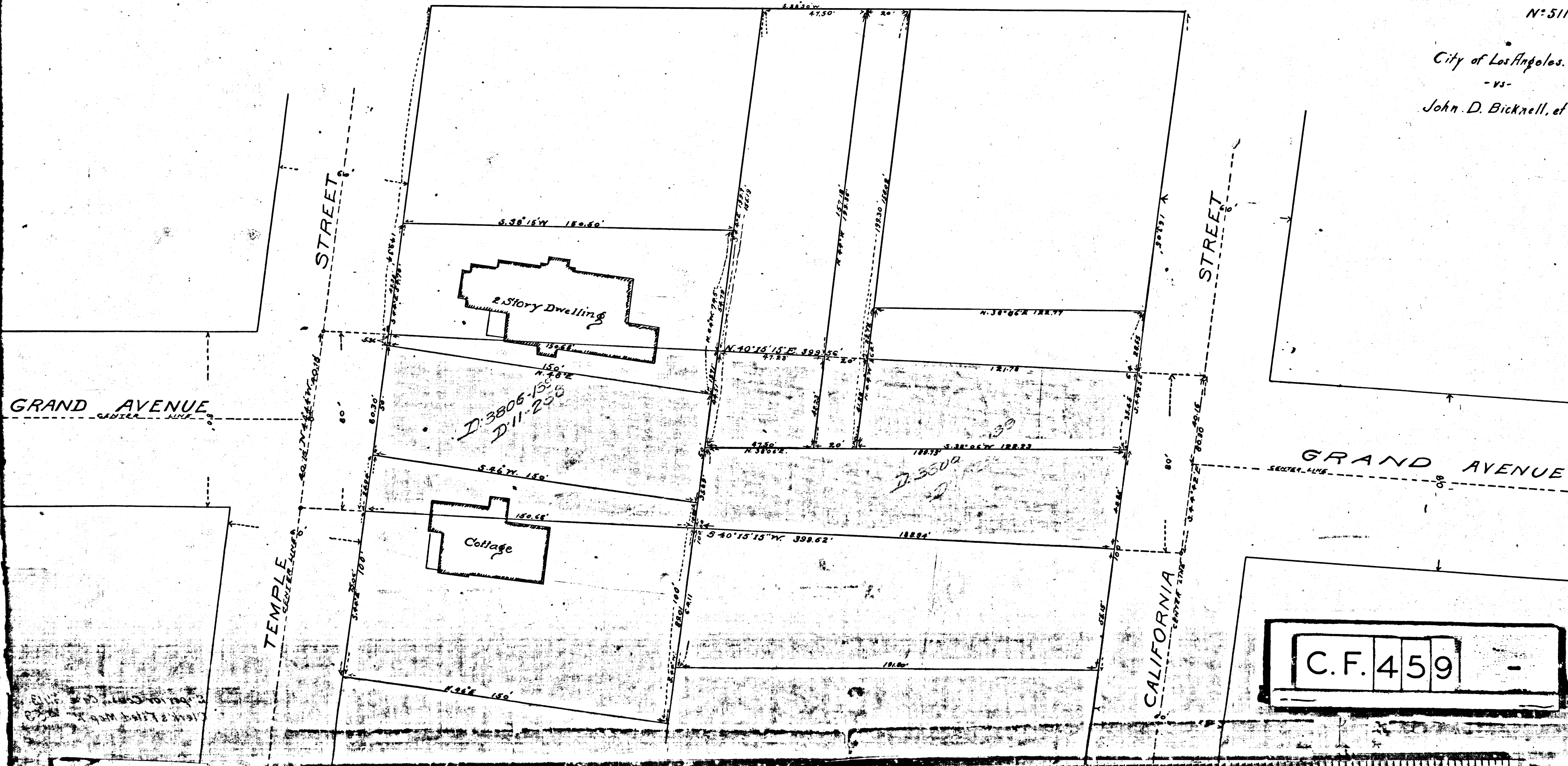


MAP APPROVED February 20th 1906
 Harry F. Stafford
 CITY ENGINEER

BUNKER HILL AVENUE

N: 51113

City of Los Angeles.
 - vs -
 John D. Bicknell, et al,



C.F. 459