

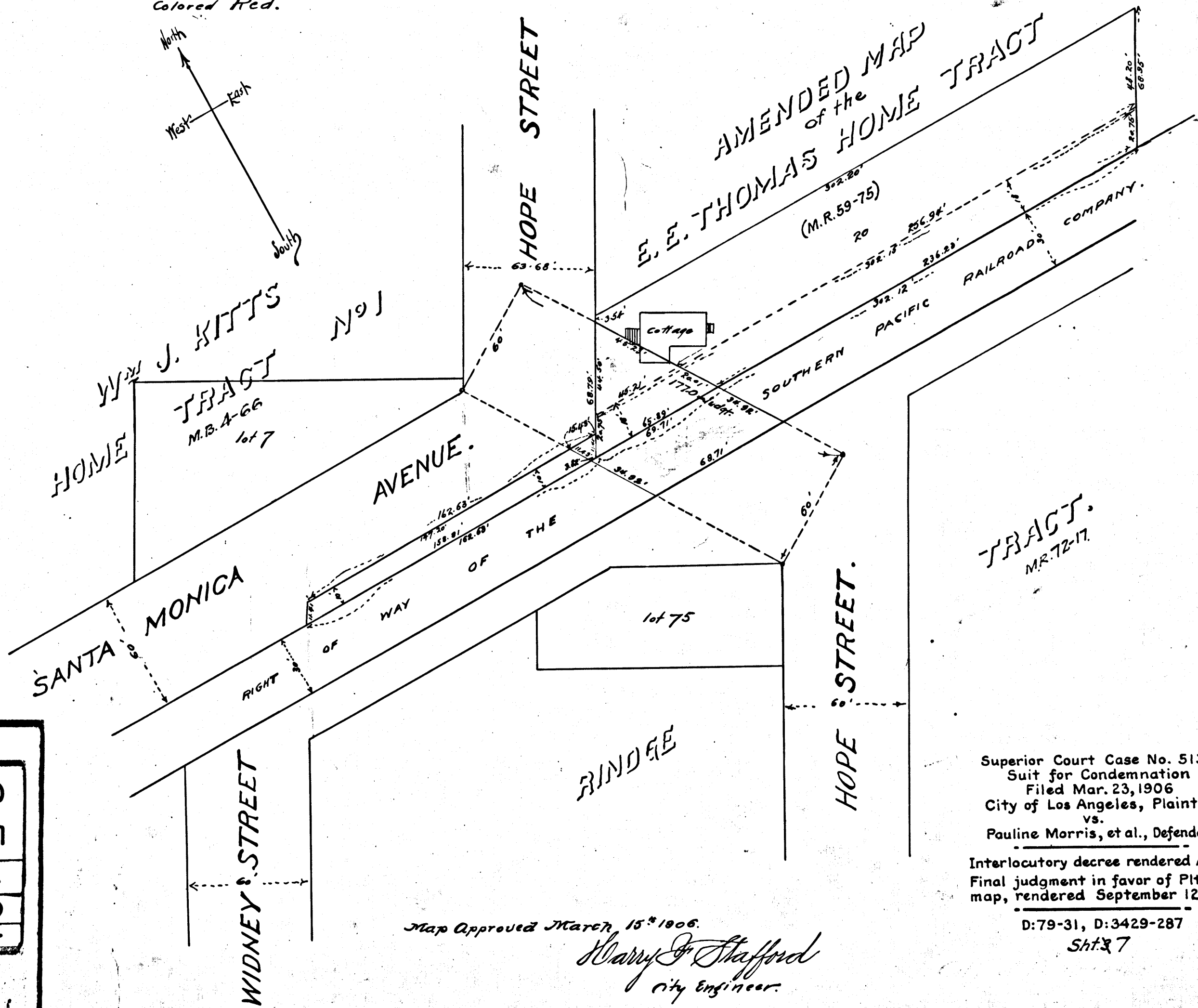
Map
 Showing lands sought to be condemned for the opening of
HOPE STREET
 Between
 Thirty-sixth Street and Thirty-eighth Street
 City of Los Angeles, Cal.
 In accordance with Ordinance N° 12101. (New Series)

Scale 40 feet to inch.

Harry F. Stafford
 City Engineer.

Note: Land sought to be condemned
 Colored Red.

March 1906



Superior Court Case No. 51321
 Suit for Condemnation
 Filed Mar. 23, 1906
 City of Los Angeles, Plaintiff,
 vs.
 Pauline Morris, et al., Defendants

Interlocutory decree rendered Aug. 21, 1907
 Final judgment in favor of Plt'ff. as per
 map, rendered September 12th., 1908.

D:79-31, D:3429-287
 Sheet 7