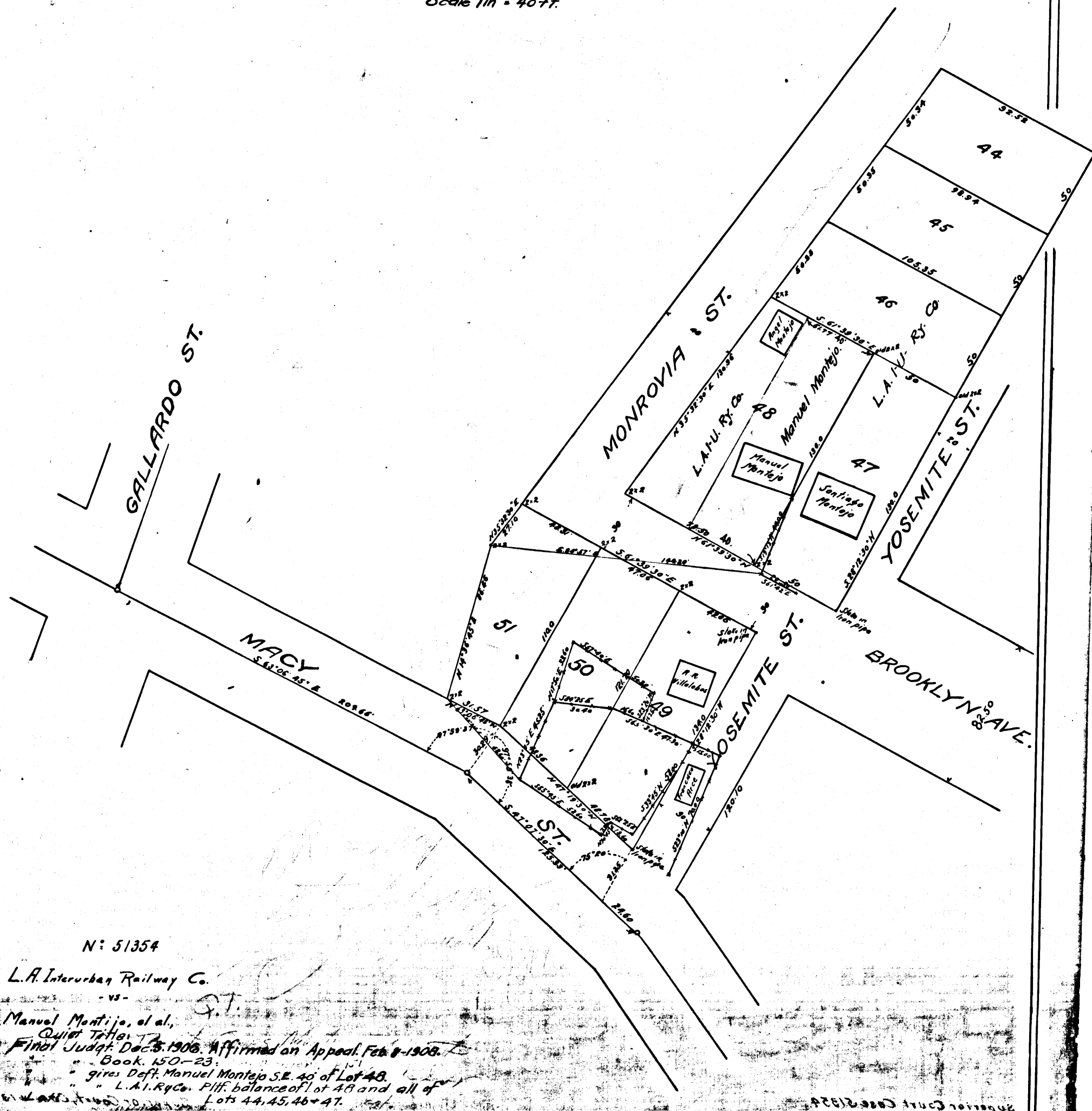


PLAT OF  
 LOTS 47, 48, 49, 50, AND 51  
 OF THE  
 ARROYO DE LOS DOSOS SUBDIVISION  
 M.R. 66-81.  
 Los Angeles City, Cal.  
 as located by E.T. Wright Sur. December 1905  
 Scale 1 in = 40 ft.



C.F. 463

N: 51354  
 L.A. Interurban Railway Co.  
 Manuel Montijo, et al.  
 Quit Title  
 Final Judgt. Dec. 8, 1906. Affirmed on Appeal Feb 8, 1908.  
 Book 150-23  
 gives Deft. Manuel Montijo S.E. 40 of Lot 48  
 L.A. Ry. Co. P.M. balance of lot 48 and all of  
 Lots 44, 45, 46 & 47.

