

MAP
 Showing land sought to be
 condemned for the opening of
HALLDALE AVENUE
 Between Forty-sixth Street and
 South City Boundary
 CITY OF LOS ANGELES CAL.

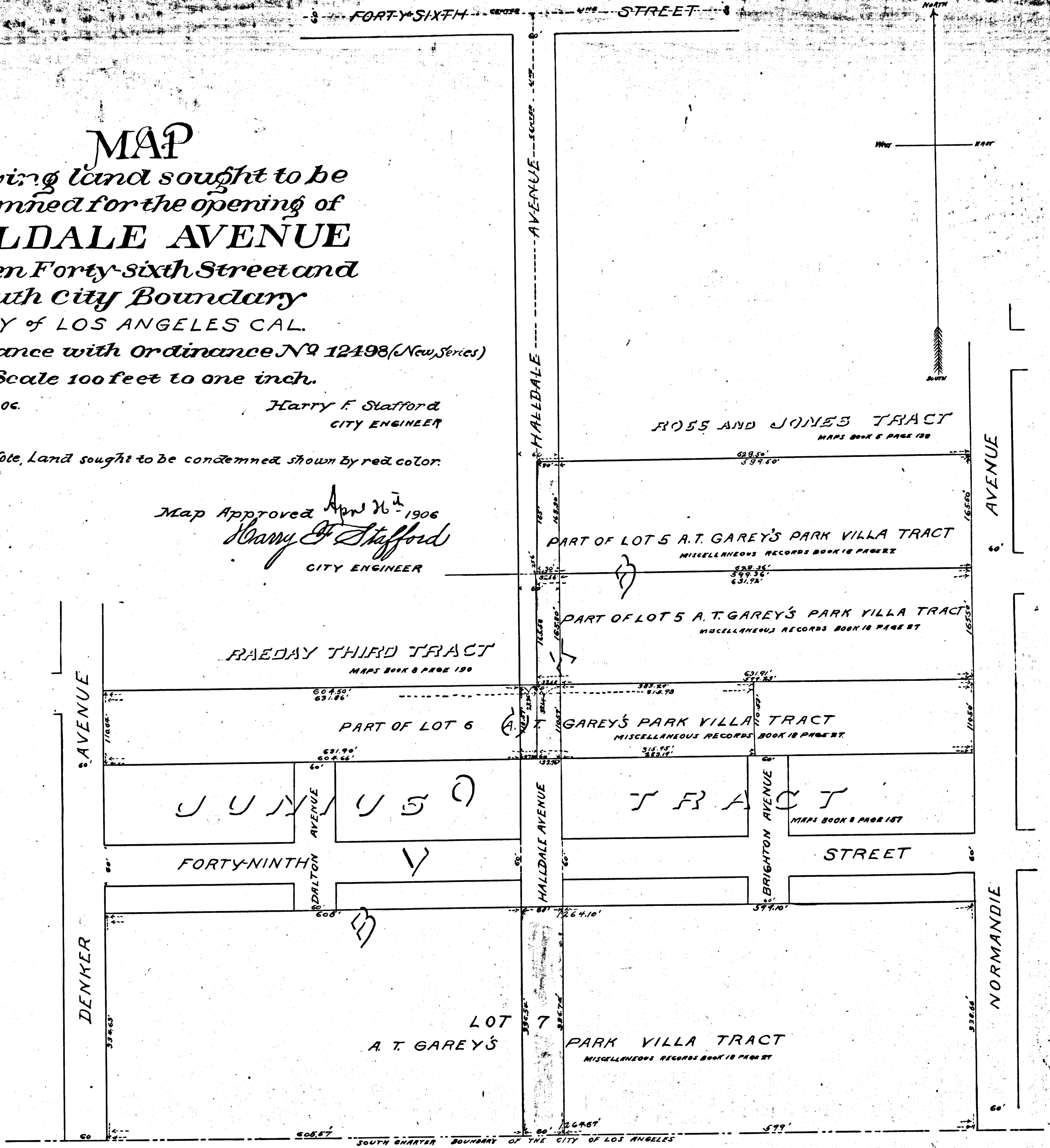
In accordance with Ordinance No 12498 (New Series)
 Scale 100 feet to one inch.

April 1906.

Harry F. Stafford
 CITY ENGINEER

Note, Land sought to be condemned shown by red color.

Map Approved Apr 26th 1906
Harry F. Stafford
 CITY ENGINEER



C.F. 469

No 52120
 City of Los Angeles, a corporation,
 -VS-
 B.M. Marble, et al.,
 Condemnation.
 Case Open (April 1st 1907)
 Dismissed, Nov 5 1907.