

Showing Land sought to be condemned  
for the opening of  
**FRENCH AVENUE**  
between  
**Pasadena Avenue and Marmion Way**

in the  
**CITY OF LOS ANGELES CAL.**  
In accordance with Ordinance No 9156 (New Series)

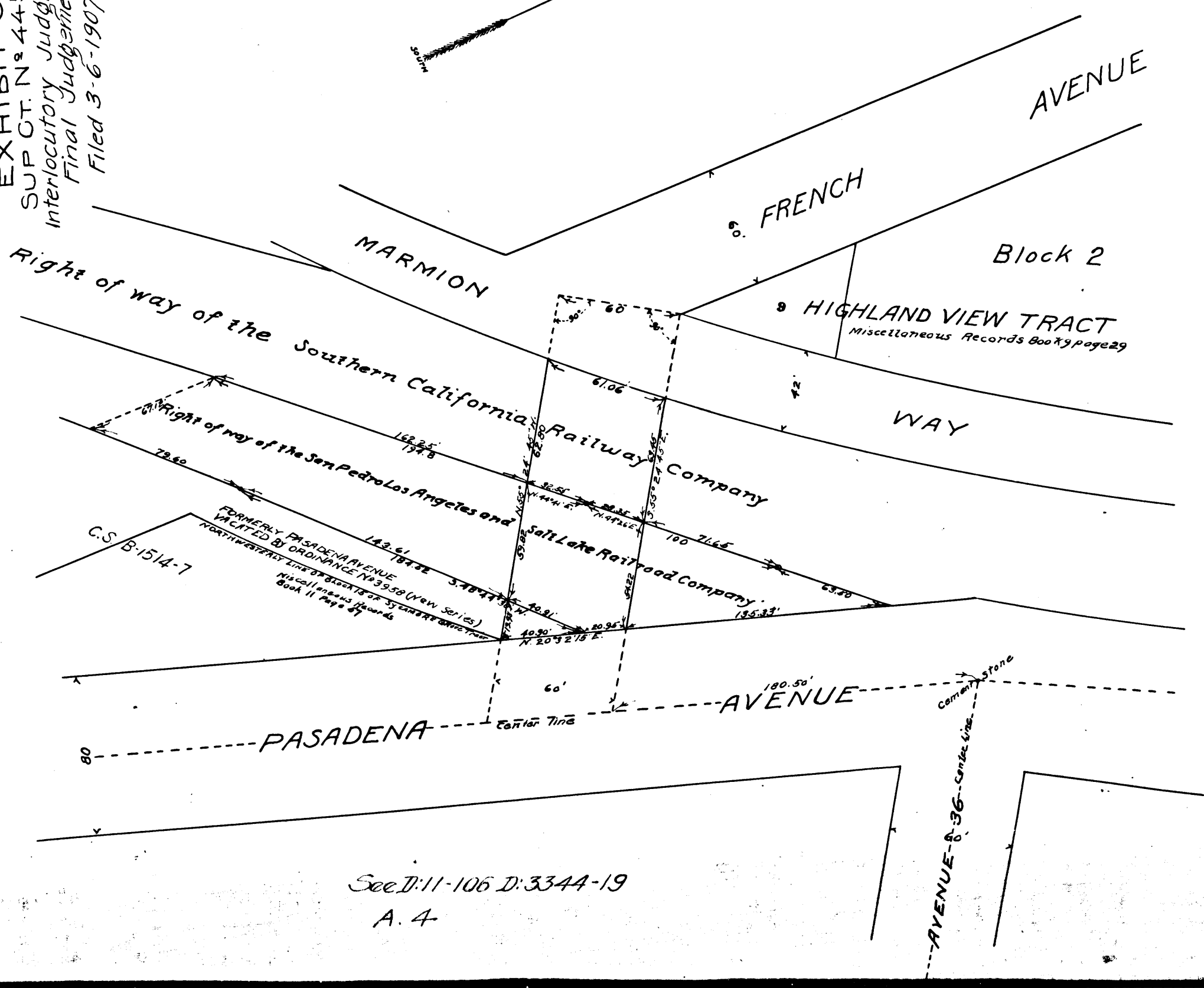
Scale 50' to one inch  
May 1904  
Harry F. Stafford  
City Engineer

Note Red tint shows land sought  
to be Condemned

Map Approved May 20<sup>th</sup> 1904  
Harry F. Stafford  
City Engineer

Filed May 26-1904  
EXHIBIT C  
SUP. CT. N. 44-599  
Interlocutory Judgment  
Final Judgment  
Filed 3-6-1907

C.F. 4811



See D:11-106 D:3344-19  
A. 4