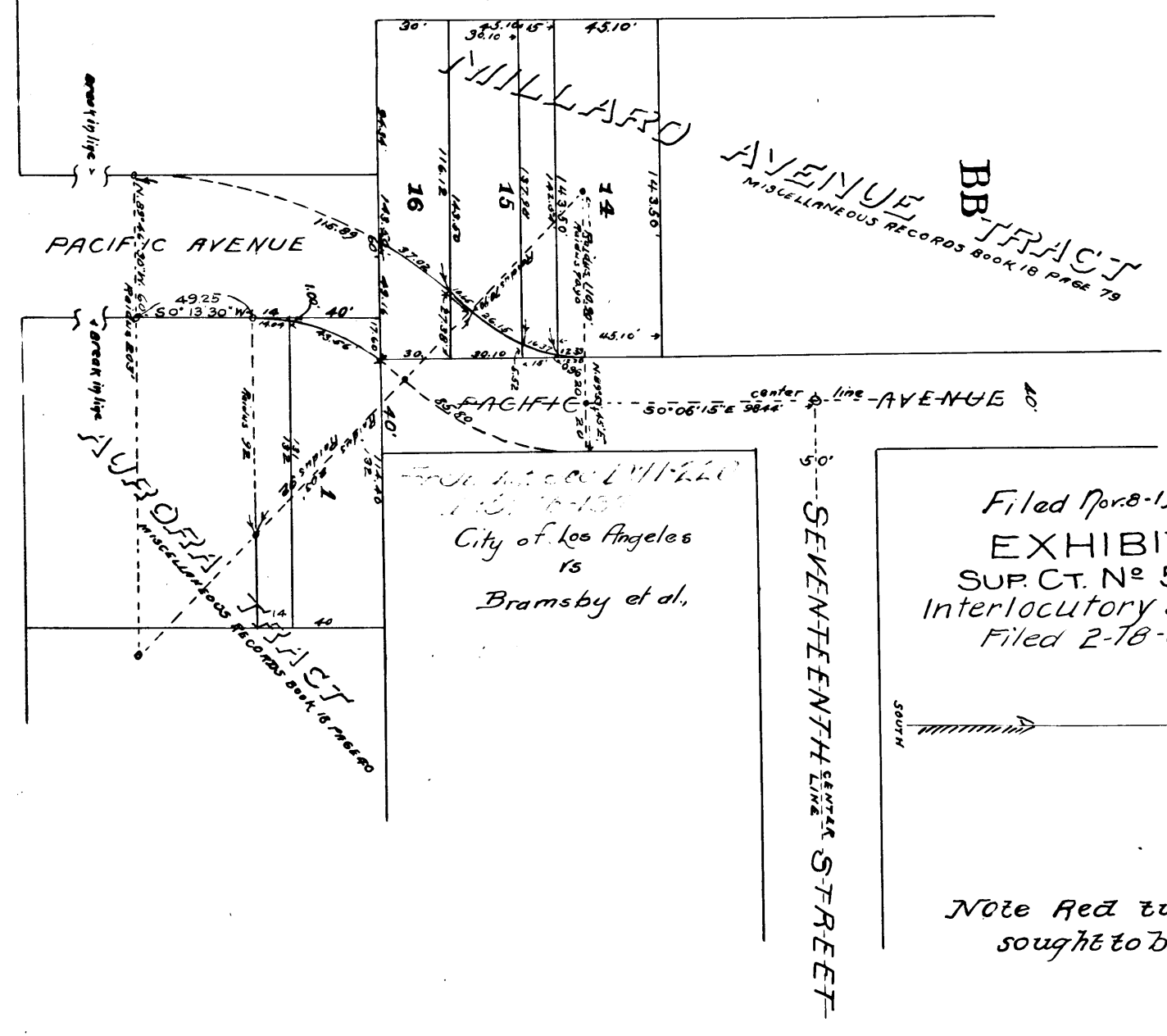
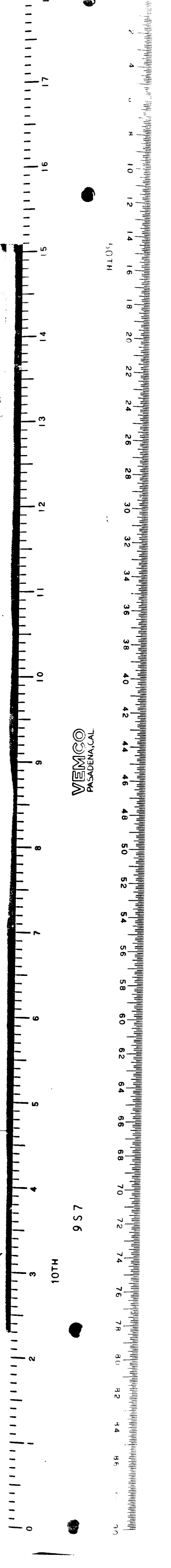


MAP
Showing land sought to be condemned
for the Opening of
PACIFIC AVENUE
 BETWEEN
 SEVENTEENTH STREET AND WASHINGTON STREET
 IN THE
 CITY OF LOS ANGELES, CAL.
 In accordance with Ordinance No 12972 (New Series)
 Sept 1906. HOMER HAMLIN
CITY ENGINEER



C.F. 482 -