

50TH

VEMCO
PASADENA, CAL.

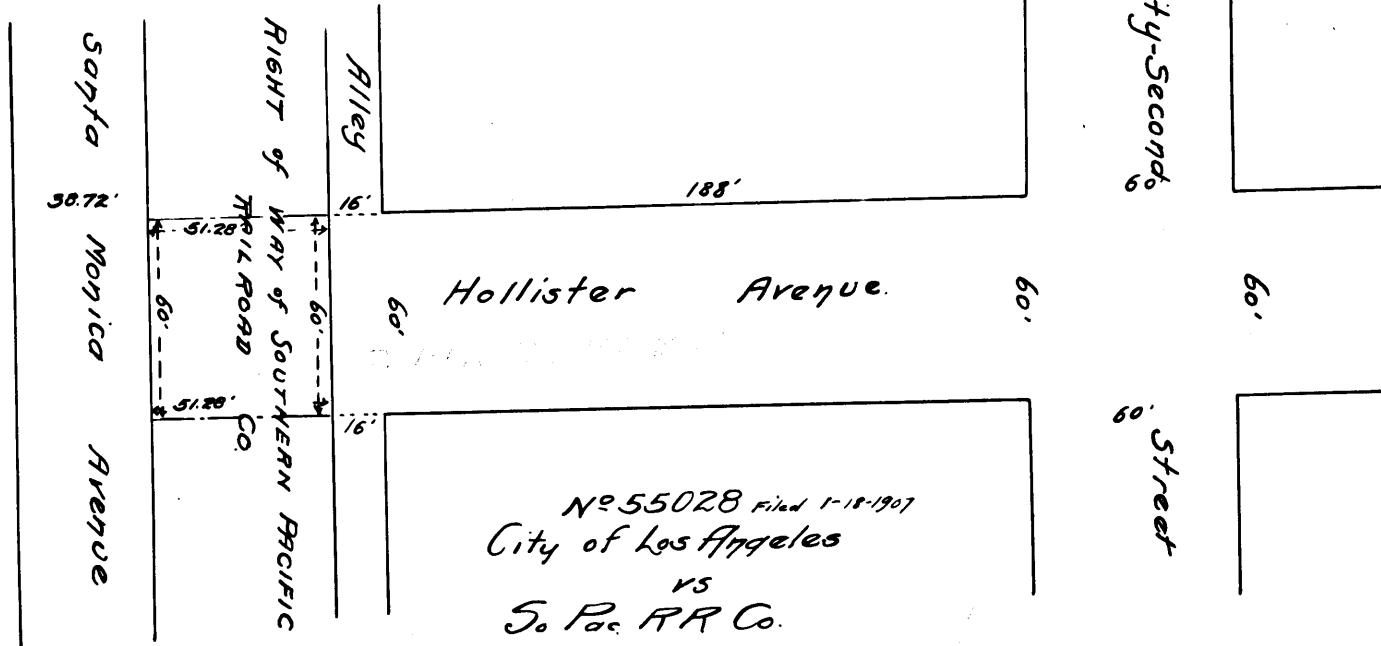
957

10TH

MAP
 showing land sought to be condemned
 for the opening of
HOLLISTER AVENUE
 between
FORTY-SECOND STREET and SANTA MONICA AVENUE
 in the
CITY of LOS ANGELES, CAL.
 in accordance with Ordinance No 12815 (New Series).
 Scale 50 feet to One Inch
 Homer Hamlin, City Engineer Dec. 1906.
 Note: Portion colored red shows land to be condemned

North

C.F. 495



10TH

957

VEMCO
PASADENA, CAL.

10TH