

C.F. 609 -

Superior Court Case No. 75183  
 Suit for Condemnation  
 Filed June 1, 1910  
 City of Los Angeles, Plaintiff  
 vs  
 Emil Firth, et al, Defendants  
 Final Judgment in favor of  
 Plaintiff, rendered June 3, 1913  
 D:20-3, D.5533-179

MAP  
 SHOWING LAND SOUGHT TO BE CONDEMNED FOR THE WIDENING  
 OF

**FIGUEROA STREET**

BETWEEN  
**SLAUSON AVE AND MANCHESTER AVE**

IN THE  
**CITY OF LOS ANGELES CAL.**

IN ACCORDANCE WITH ORDINANCES NOS. 19291 & 19705 New Series

Hiram Hamlin - City Engineer

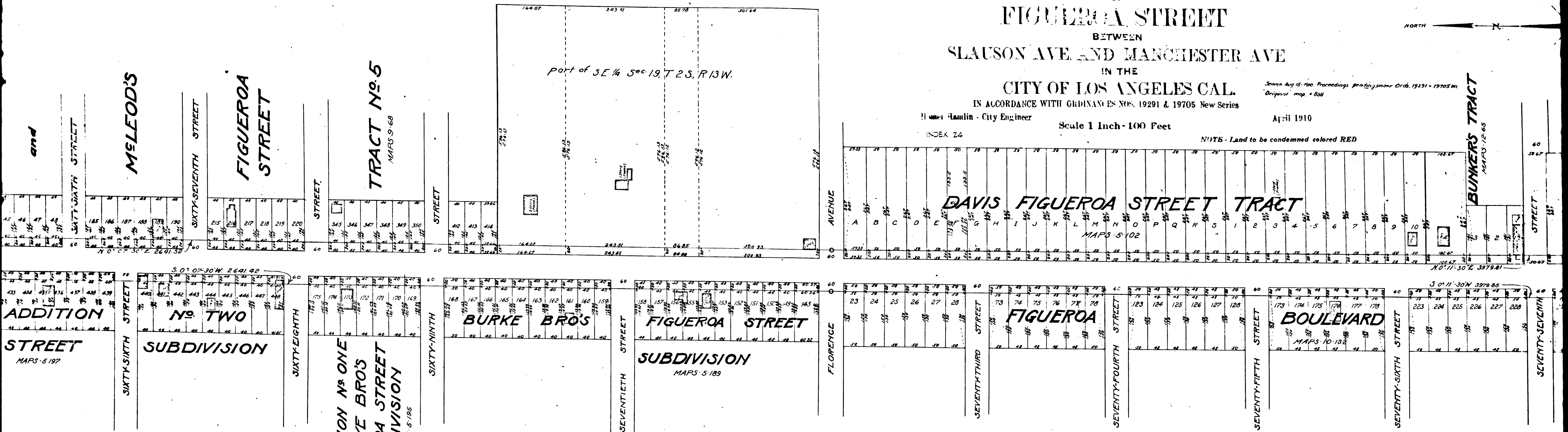
Scale 1 Inch = 100 Feet

Shown Aug 15, 1910. Proceedings pending under Ord. 19291 & 19705 New Series.  
 Original map # 208

April 1910

INDEX 24

NOTE - Land to be condemned colored RED

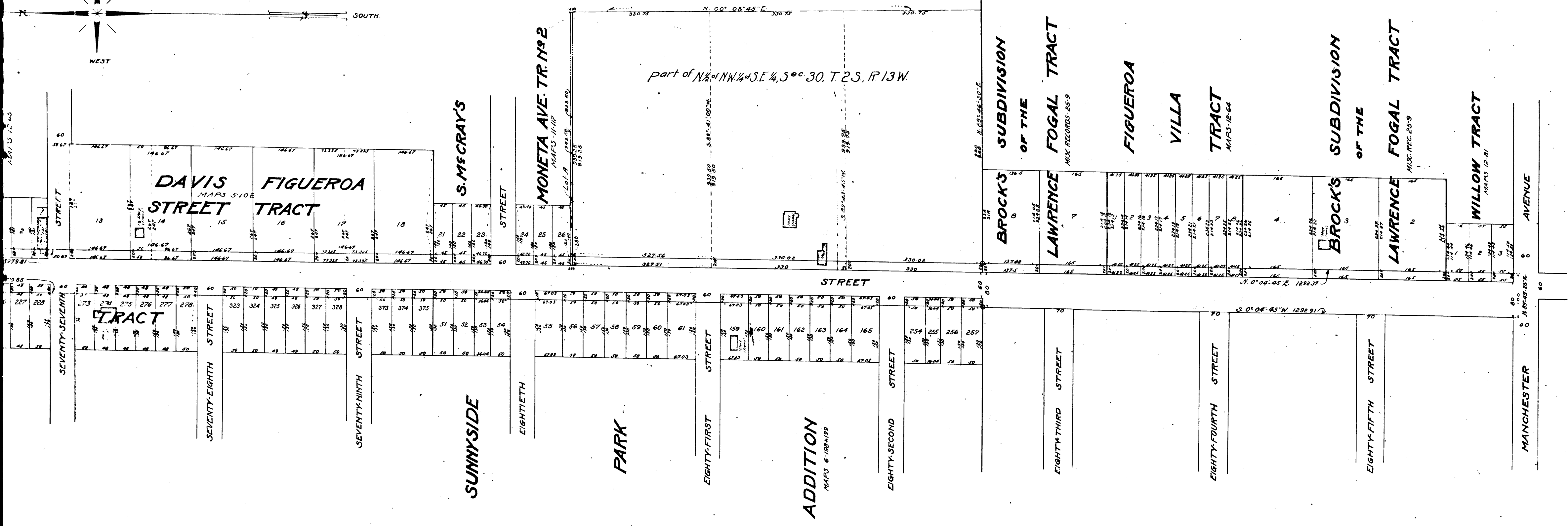
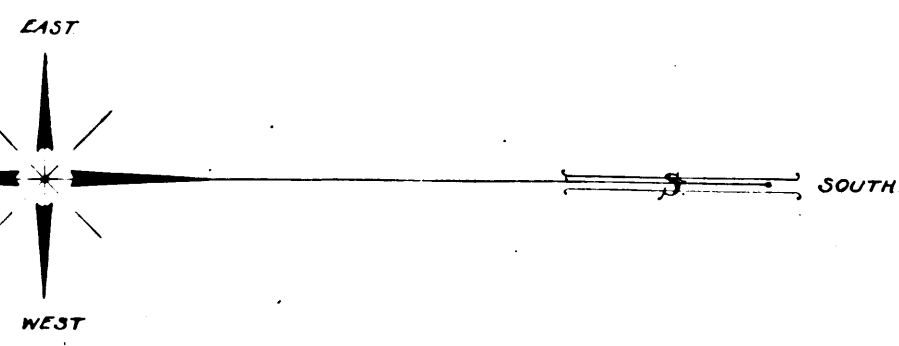


NOTE Dotted lines and figures show property lines and dimensions in those cases where the actual holdings differ from the Recorded Subdivisions.

19291  
 19705  
 1-19-12  
 4-9-12  
 02-157

Part of Figueroa Street name established by Ord. 39,623.

2  
 C.F. 609 -



part of N 1/2 of NW 1/4 of SE 1/4, Sec. 30, T. 2S, R. 13W

3

C.F. 609 -