

**MAP**  
 SHOWING THE LAND TO BE CONDEMNED  
 FOR THE OPENING OF AN  
**ALLEY**

FROM  
**EIGHTH STREET TO NINTH STREET**  
 BETWEEN  
**MAIN STREET AND LOS ANGELES STREET**  
 IN THE

**CITY OF LOS ANGELES, CAL.**

In accordance with Ordinances {20374} {21148} (New Series)

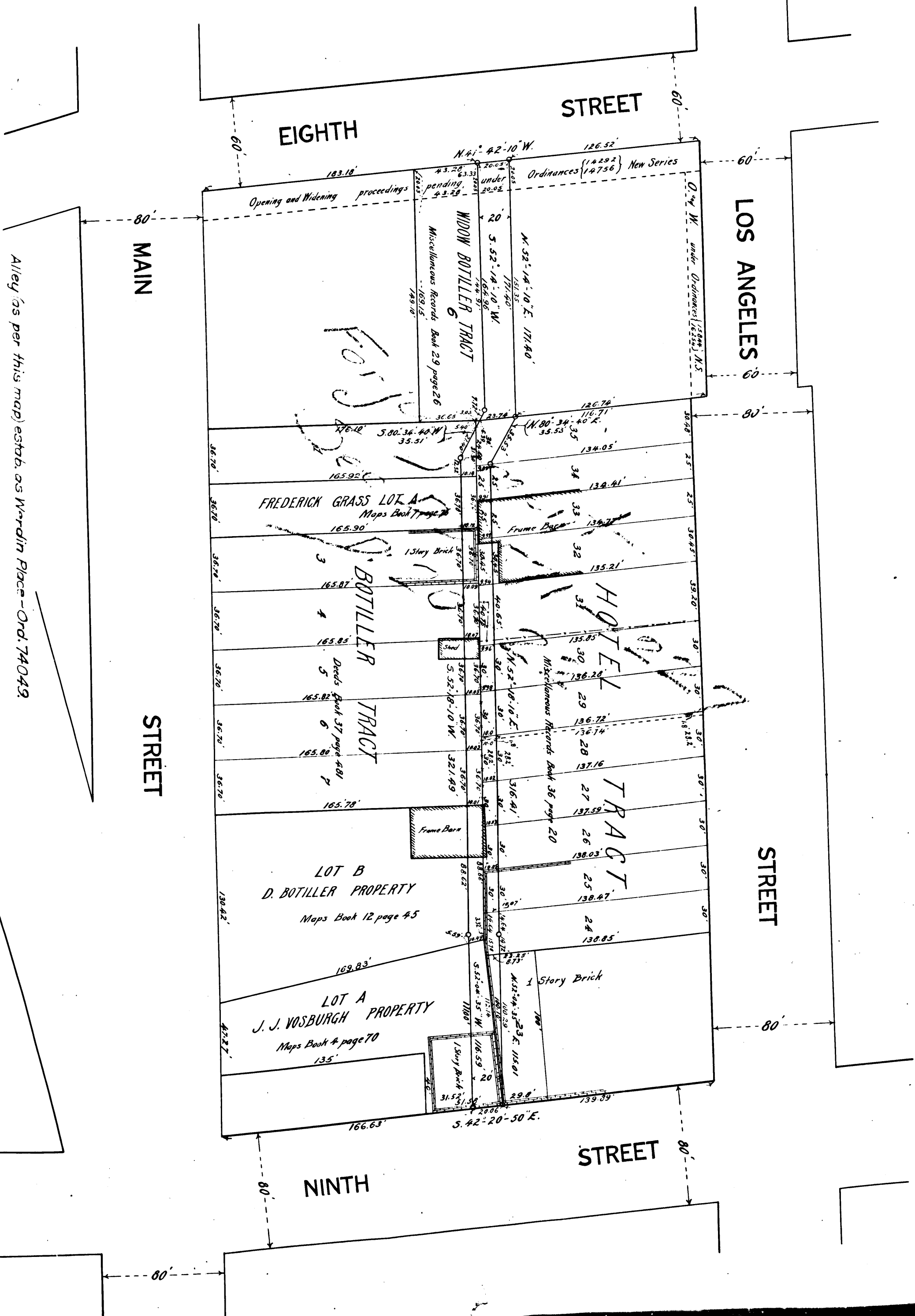
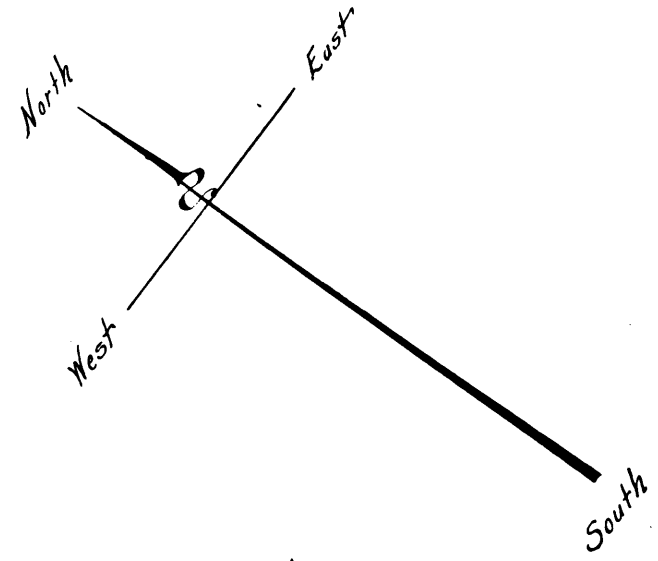
Scale 1 inch = 50 feet

Homer Hamlin, City Engineer

February 1911

Note:- Land to be condemned colored red

Sup. C.C. # 80598  
 City of Los Angeles  
 vs.  
 Henry Fisher, et al.  
 Proceed. pending June 1-1911  
 Final Judgt. Aug 21 1913  
 D: 20-22



Alley (as per this map) estab. as Wardin Place - Ord. 74049

C.F. 638