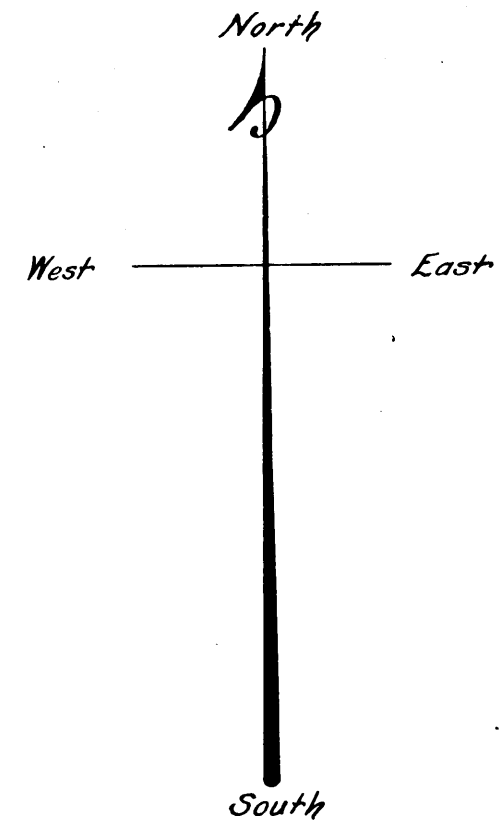
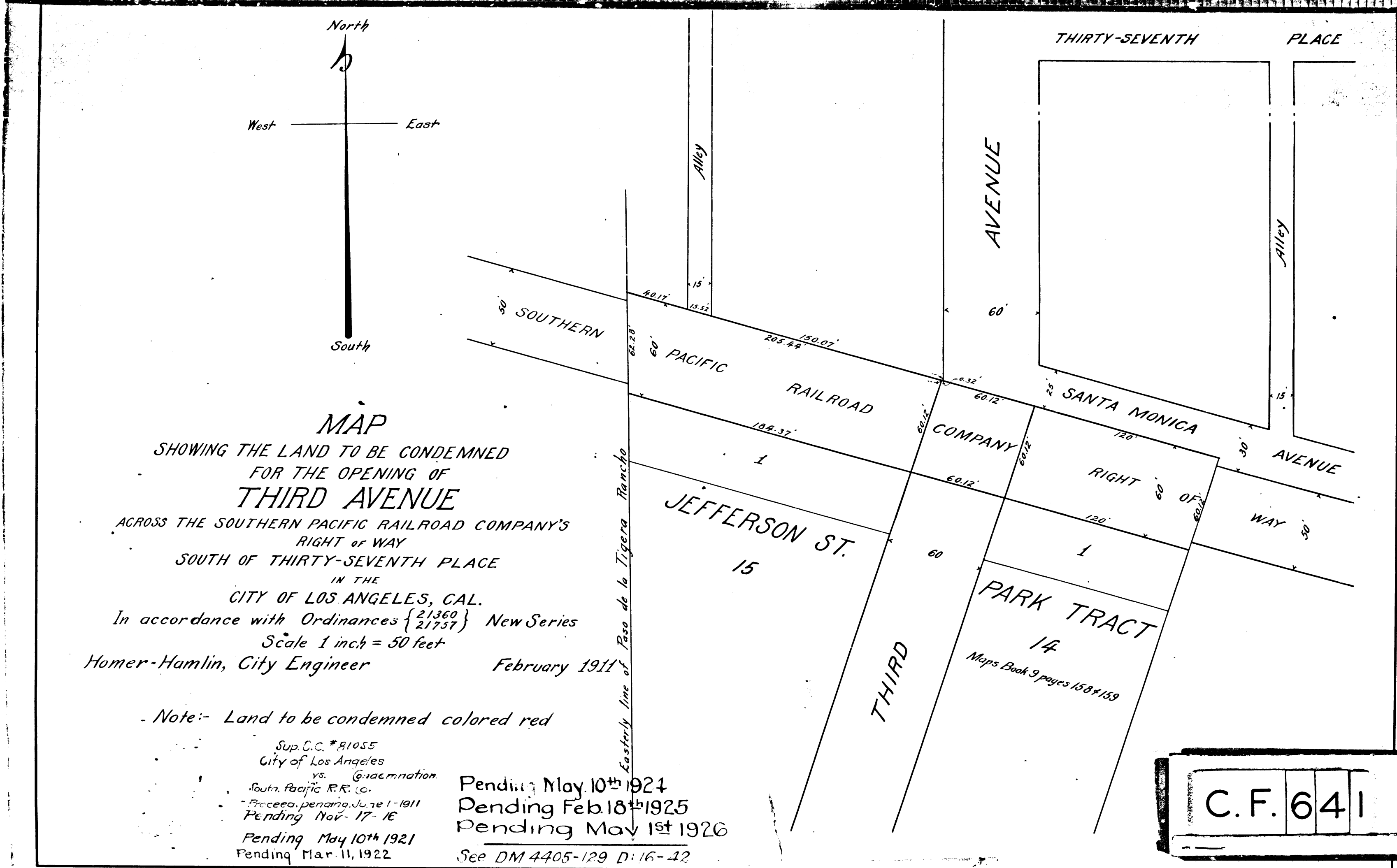


50TH



**MAP**  
 SHOWING THE LAND TO BE CONDEMNED  
 FOR THE OPENING OF  
**THIRD AVENUE**  
 ACROSS THE SOUTHERN PACIFIC RAILROAD COMPANY'S  
 RIGHT OF WAY  
 SOUTH OF THIRTY-SEVENTH PLACE  
 IN THE  
 CITY OF LOS ANGELES, CAL.  
 In accordance with Ordinances { 21360 } New Series  
 { 21757 }  
 Scale 1 inch = 50 feet  
 Homer-Hamlin, City Engineer February 1911

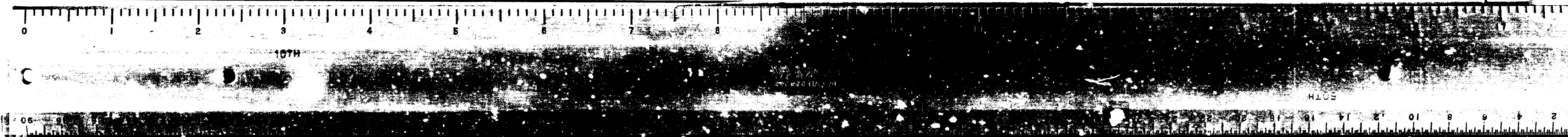
Note:- Land to be condemned colored red

Sup. C.C. # 81055  
 City of Los Angeles  
 vs. Examination  
 South Pacific R.R. Co.  
 Proceeding pending June 1-1911  
 Pending Nov. 17-16  
 Pending May 10th 1921  
 Pending Mar. 11, 1922

Pending May 10th 1924  
 Pending Feb. 18th 1925  
 Pending May 1st 1926  
 See DM 4405-129 D: 16-42

Easterly line of Paso de la Tijera Rancho

C.F. 641 -



10TH