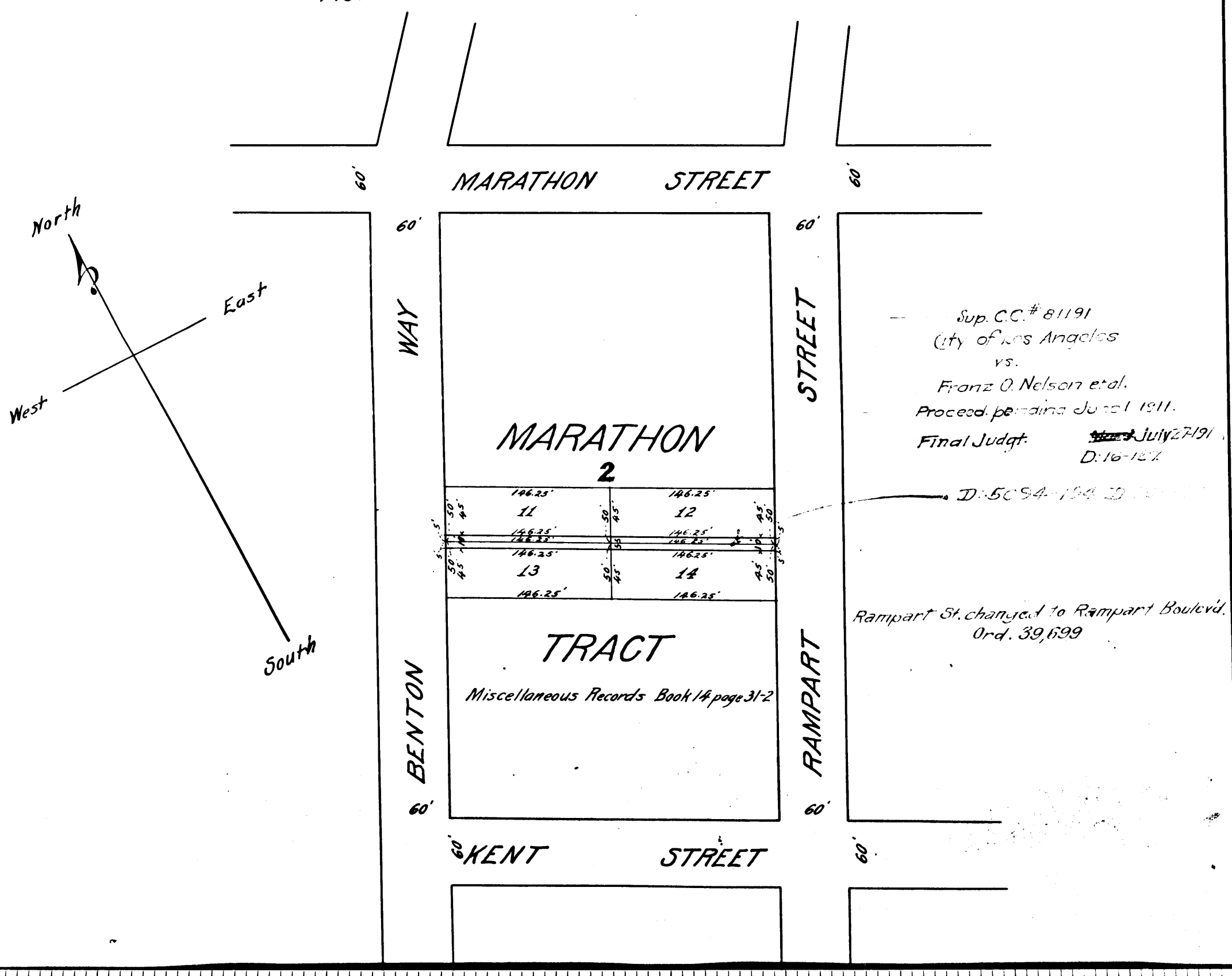


**MAP**  
 SHOWING THE LAND TO BE CONDEMNED  
 FOR THE OPENING OF AN  
**ALLEY**  
 FROM  
**BENTON WAY TO RAMPART STREET**  
 BETWEEN  
**KENT STREET AND MARATHON STREET**  
 IN THE  
**CITY OF LOS ANGELES, CAL.**

In accordance with Ordinances <sup>{21351}</sup>/<sub>{21756}</sub> New Series  
 Scale 1 inch = 100 feet

Homer Hamlin, City Engineer February 1911

Note:- Land to be condemned colored red



C.F. 642

10TH  
957

VEMCO  
PASADENA, CAL.

H105

10TH

957

VEMCO  
PASADENA, CAL.

H105