

C.F. 643

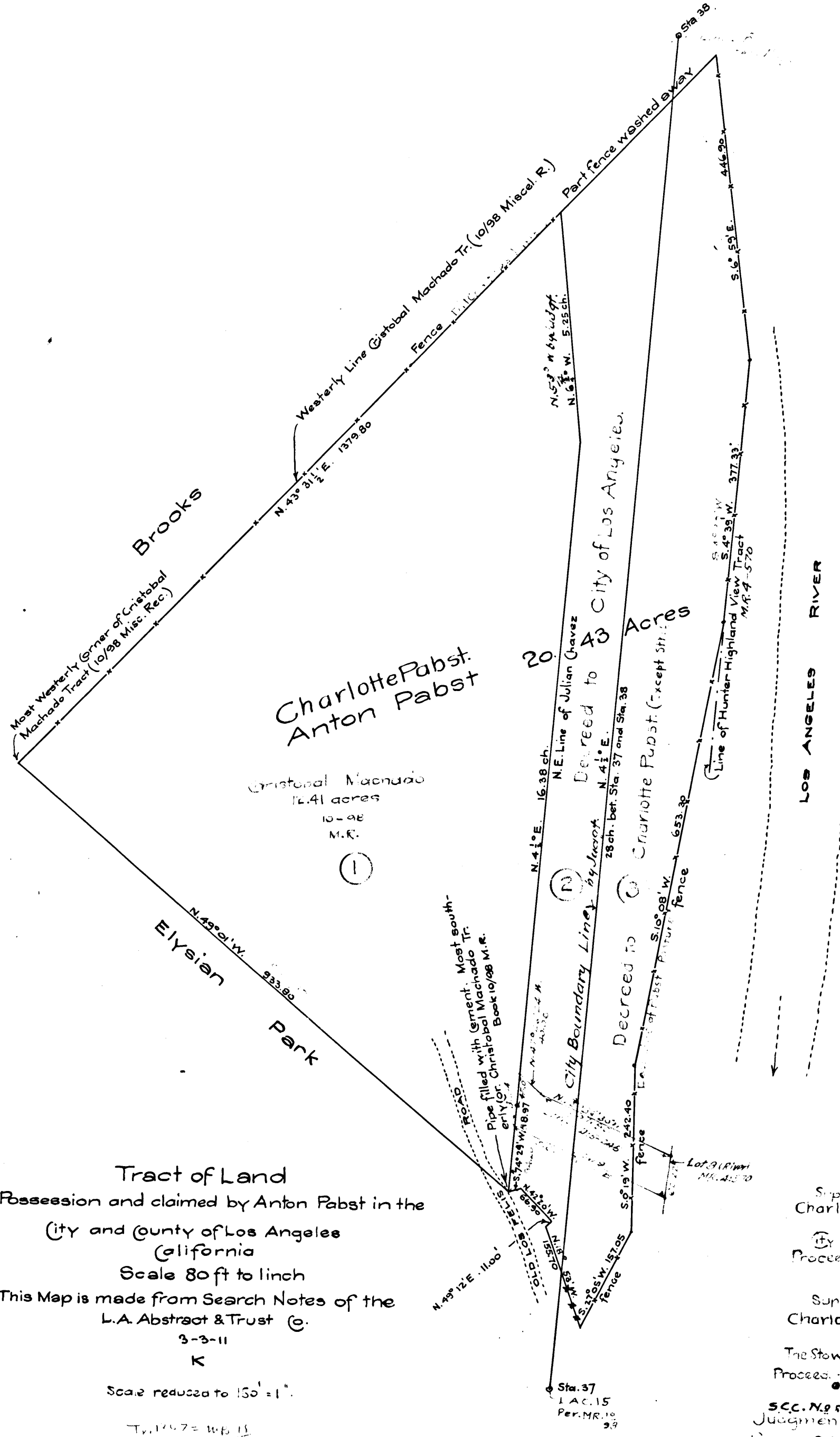
Tract of Land  
in Possession and claimed by Anton Pabst in the  
City and County of Los Angeles  
California

Scale 80 ft to inch  
This Map is made from Search Notes of the  
L.A. Abstract & Trust Co.  
3-2-11  
K

Scale reduced to 150' = 1"

T<sub>1</sub> 147 = 146 1/2

Note: Excepting a 60' strip deeded to  
City of Los Angeles, D. 1577-1578  
D. 5-1912 Judgt.



Sup. C.C. # 81549 = Plff. Ex. 1.  
Charlotte Pabst  
vs.  
City of Los Angeles et al.  
Proceed. and Judgment in  
Quiet Title. F. Judgt. Dept.  
" Jun 26-1912  
" Book 260-57

Sup. C.C. # 8,550  
Charlotte Pabst  
vs.  
The Stowell Realty Co. et al.  
Proceed. and Judgment in  
Quiet Title. F. Judgt. For Plff.  
" Oct 6-1911  
" Book 240-127

5CC. No. 1549.  
Judgment Rendered in  
favor of L.A. City, June 20-1912,  
Recorded in Judgment Book  
2CC, Page 57 on Jun. 26-1912.

