

Enlarged Scale of portion of Woodland Cemetery fronting on Fremont Avenue

Plat showing Assessment District for the opening and widening of Fremont Avenue (formerly Front Street) from 4<sup>th</sup> Street to the Easterly City Limits Santa Monica, (et).

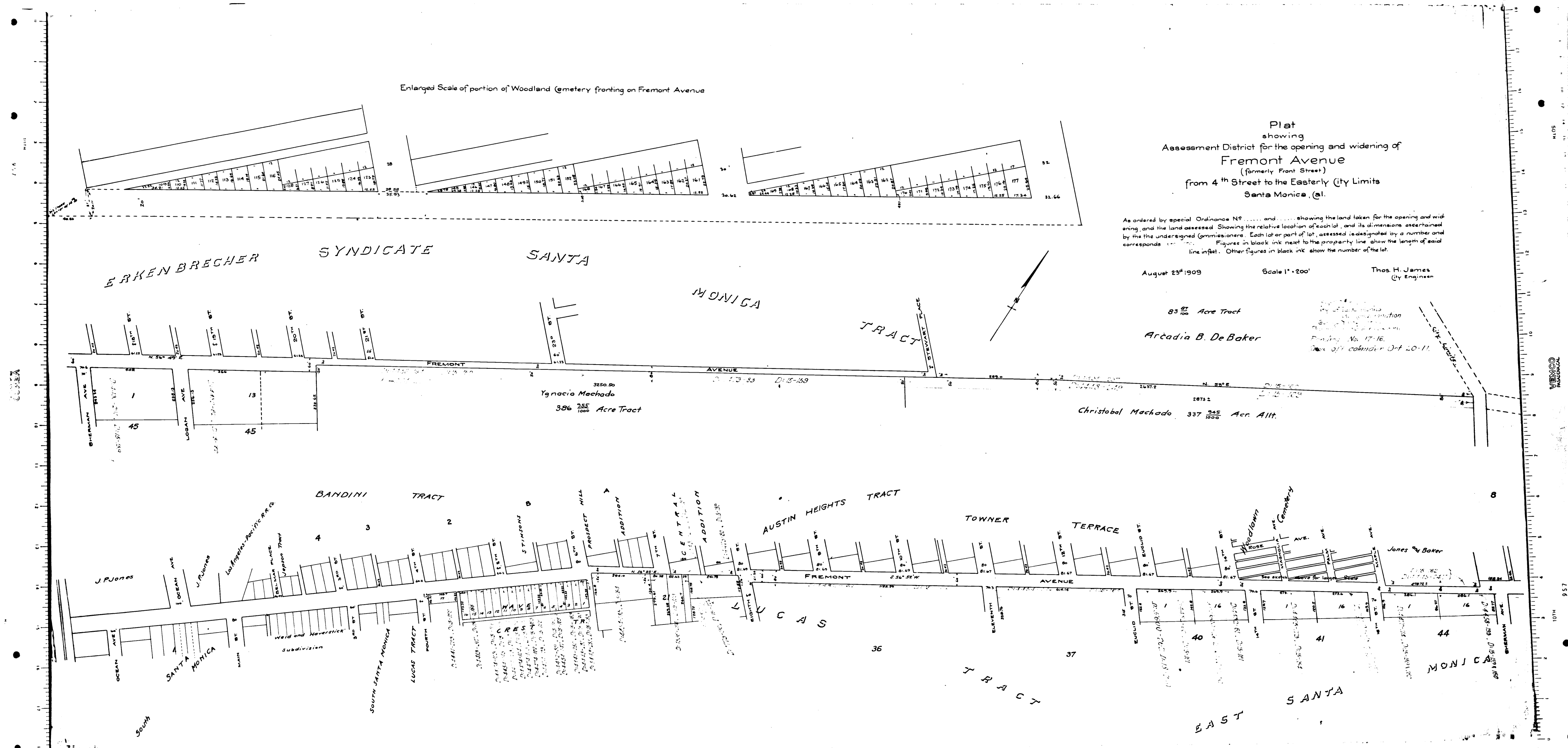
As ordered by special Ordinance No. 10000 and showing the land taken for the opening and widening, and the land assessed. Showing the relative location of each lot, and its dimensions ascertained by the undersigned (Commissioner). Each lot or part of lot, assessed (designated by a number and corresponds to the figures in black ink next to the property line show the length of said line in feet. Other figures in black ink show the number of the lot.

August 23<sup>rd</sup> 1909 Scale 1" = 200' Thos. H. James (City Engineer)

83<sup>21</sup>/<sub>100</sub> Acre Tract  
Arcadia B. De Baker

Christabel Machado 337<sup>255</sup>/<sub>1000</sub> Acre Allt.

Ignacia Machado 386<sup>285</sup>/<sub>1000</sub> Acre Tract



C.F. 648