

50TH

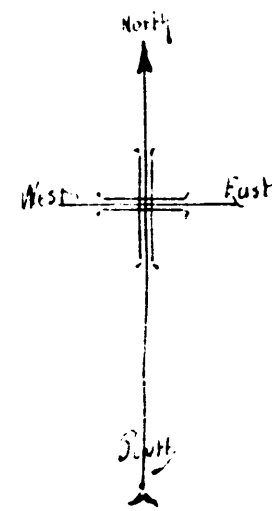
LS6

H101



MAP
 Showing Land sought to be Condemned
 For the Opening of
 — CENTRAL AVENUE. —
 Between
 Fifty-eighth Street and Slauson Avenue
 in the
 City of Los Angeles.

In accordance with Ordinance N^o 21596 (New Series)
 2153
 Scale: 100 feet to inch



Harmer Hamlin
 City Engineer
 April 1911.

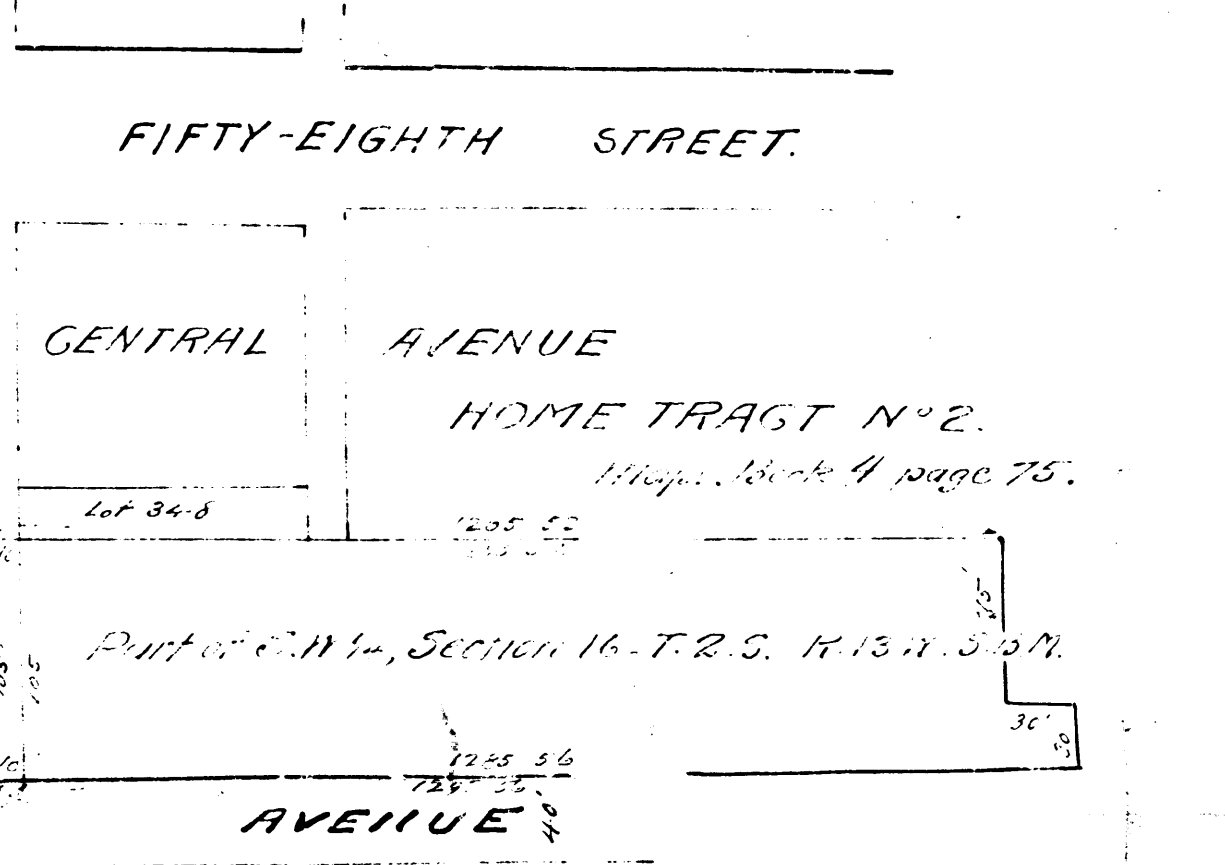
1296 23
 1286 23
 Part of SE^{1/4}, Section 1, T. 2. S. R. 13. W. S. 11. M.
 1286 22
 1296 22
 SLAUSON

CENTRAL AVENUE
 80' 0"
 1287 21
 1287 22

Art. 7

Sub. C. 2. # 82318
 City of Los Angeles
 A. T. & S. F. A. S. et al.
 Proceeding begun June 1-1911.
 Final Judgt. Feb. 10-1914.
 D: 20-C9.

Note: Land sought to be Condemned Colored red.



C.F. 650



50TH

90