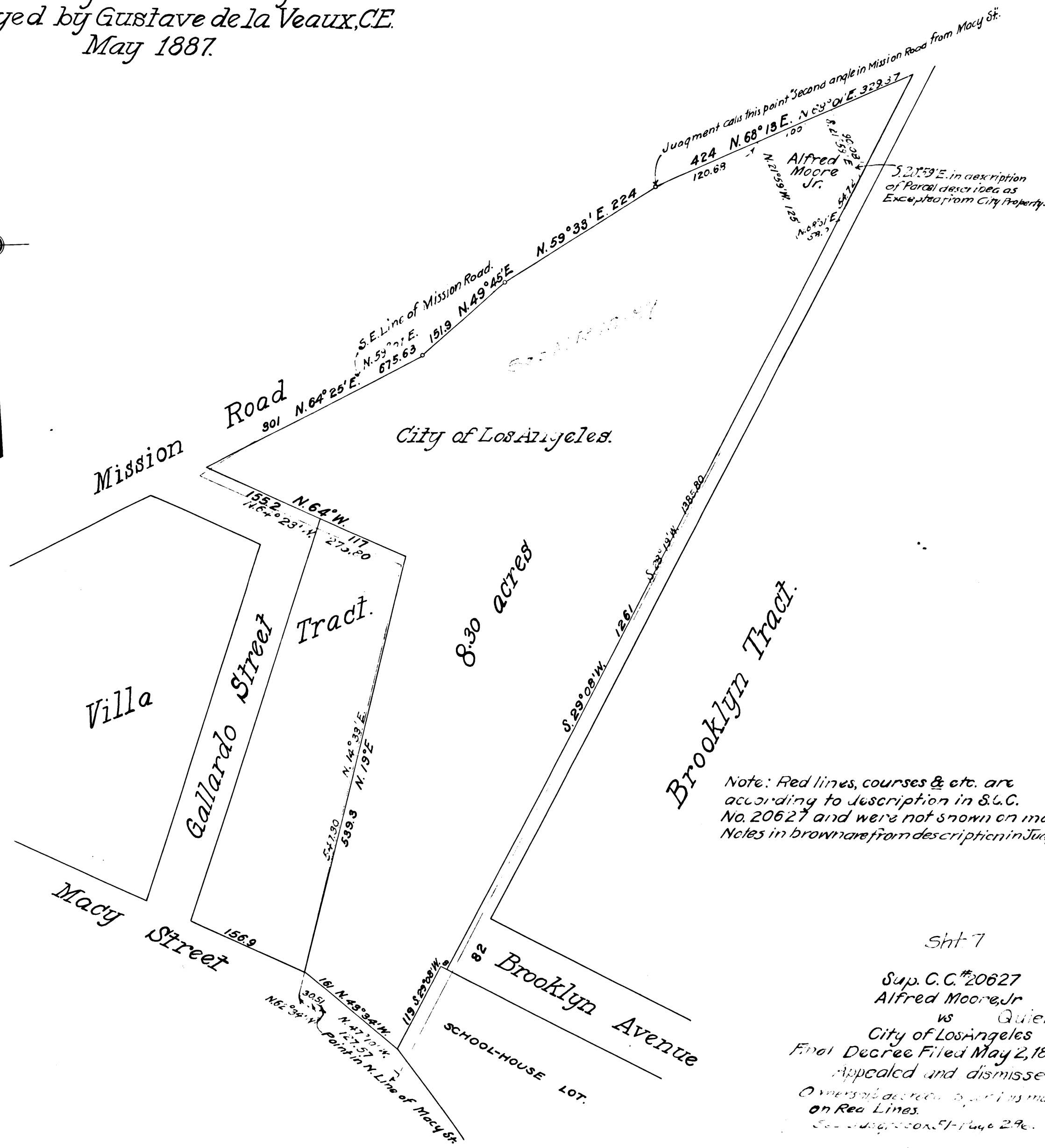
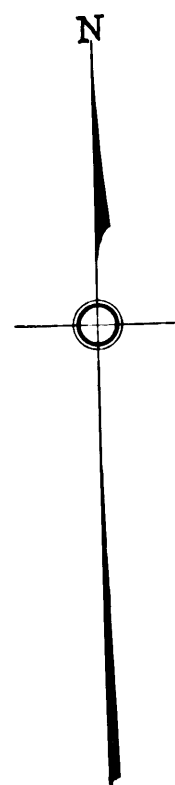


ALFRED MOORE'S SUBDIVISION
of an addition to the
BROOKLYN TRACT
Los Angeles. 1887-May.
Surveyed by Gustave de la Veaux, C.E.
May 1887.



Note: Red lines, courses & etc. are according to description in S.L.C. No. 20627 and were not shown on map. Notes in brown are from description in Judgment.

Sh't 7
Sup. C. C. #20627
Alfred Moore, Jr.
vs. Quiet Title
City of Los Angeles
Final Decree Filed May 2, 1895.
Appealed and dismissed Nov. 17-95.
Original decree & map as modified on Red Lines.
See description on page 29c.

C.F. 6511

