

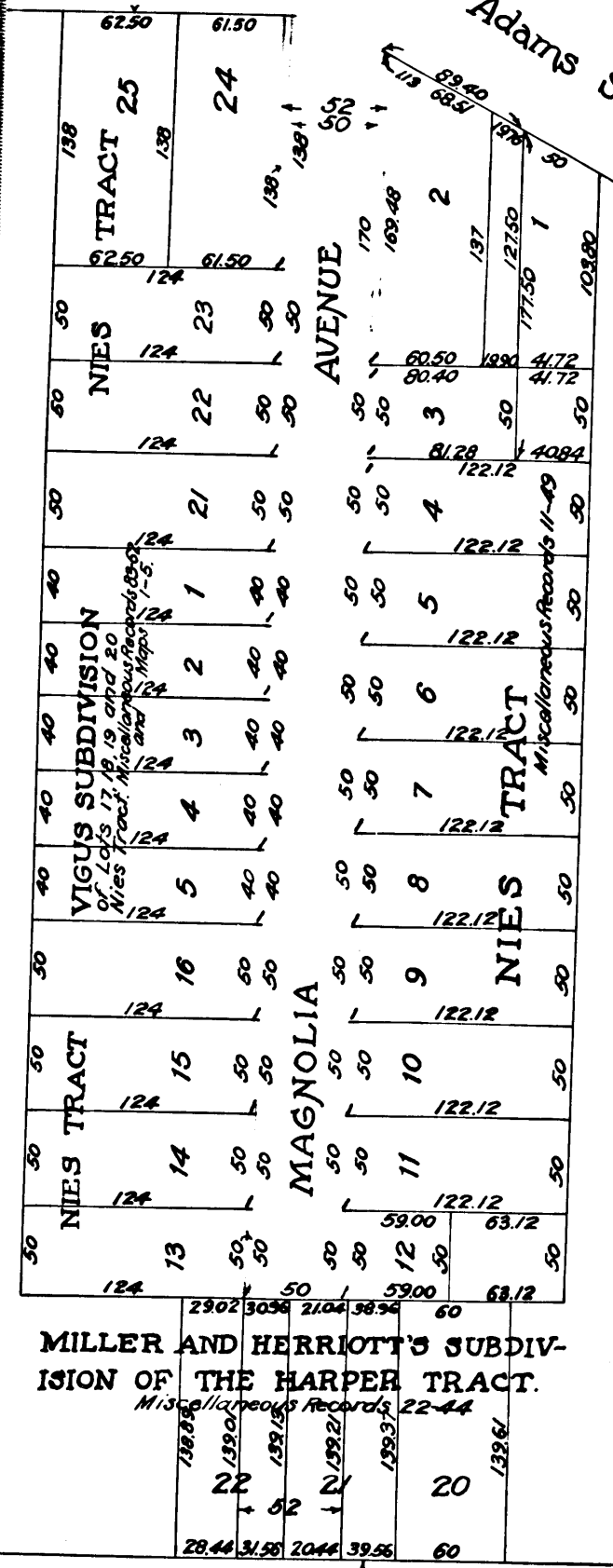
Sup. C.C. #60821.
 City of Los Angeles
 VS
 Ellen Going et al
 Final Judgment Jul. 8- 1910.

Condemnation.
 Quiney Street Judgt. for Plaintiff.



Adams Street

Adams Street



Map Showing
 LANDS SOUGHT TO BE CONDEMNED
 FOR THE OPENING AND WIDENING
 OF
 MAGNOLIA AVENUE

between
 Adams Street and Twenty-seventh Street
 In accordance with Ordinance No. 15339 (New Series)

CITY OF LOS ANGELES
 Homer Hamlin City Engineer.

Scale-100ft per inch.

JANUARY
 1908

Note - Land to be condemned shown colored red.

C.F. 652

