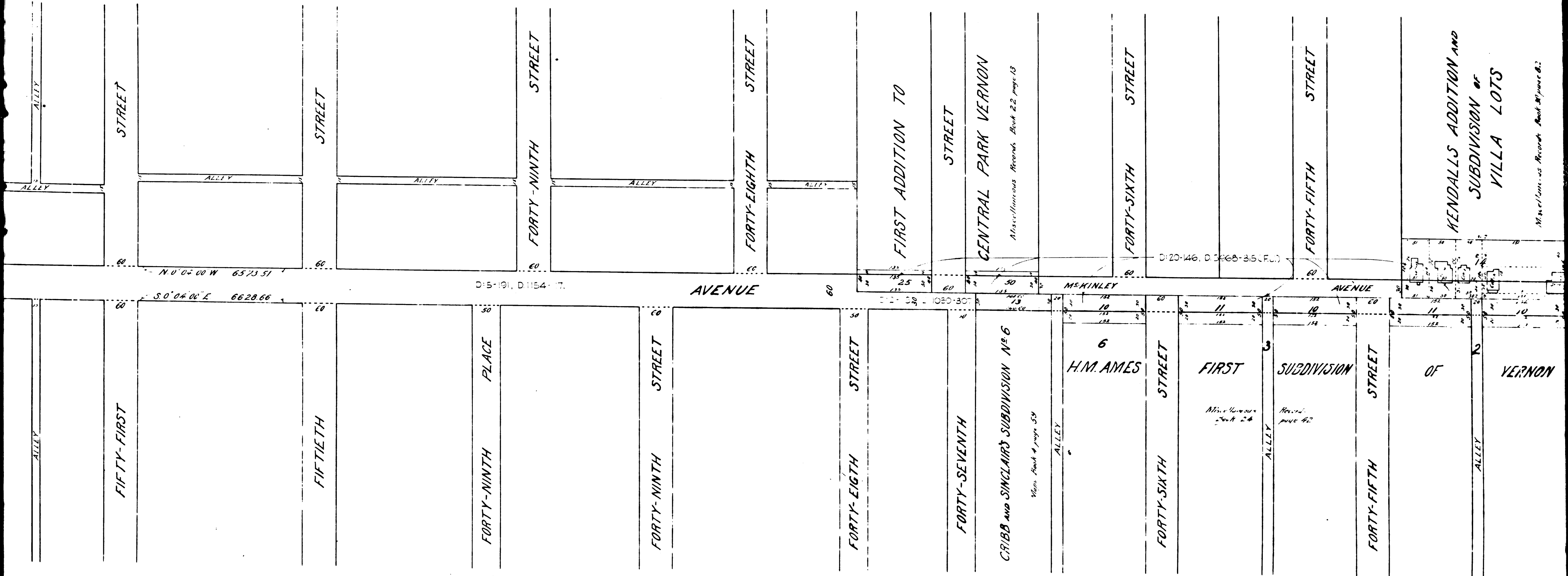


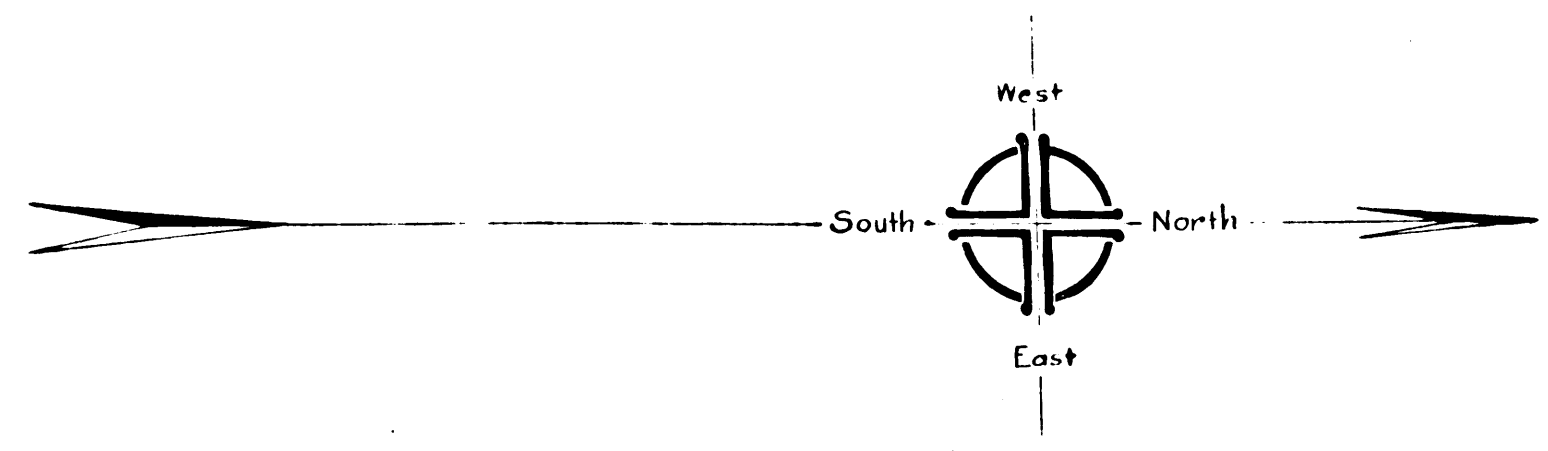
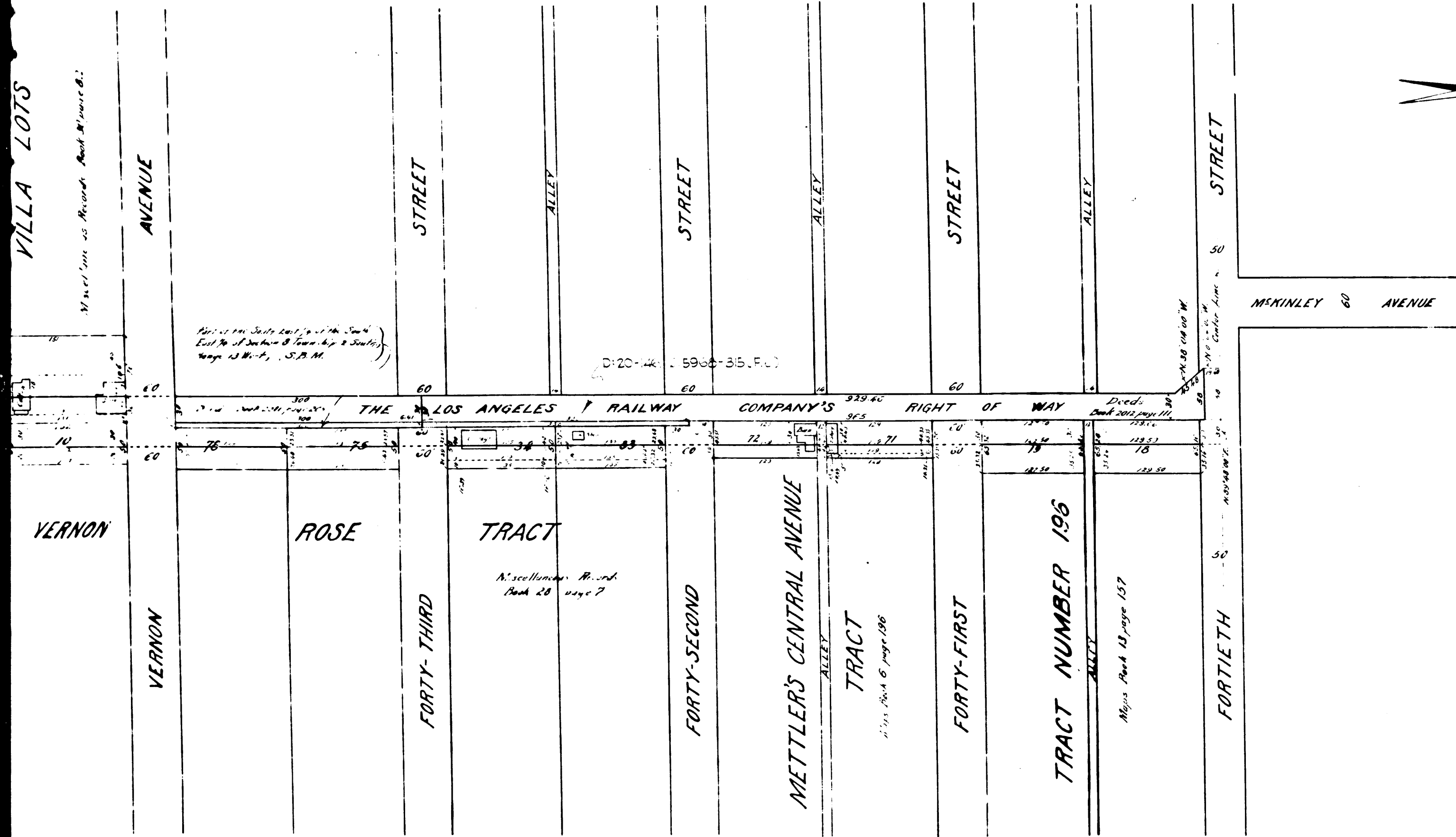
C.F. 665 -



2

C. F. 665 -

Superior Court Case No. 84715
 Suit for Condemnation
 Filed Aug. 22, 1911
 City of Los Angeles, Plaintiff
 VS
 M. Decker, et al, Defendants
 Final Judgment in favor of Pltff.
 as per map rendered Feb. 10, 1915
 D:20-146, D.5968-315



MAP
 SHOWING THE LAND TO BE CONDEMNED
 FOR THE OPENING AND WIDENING OF
MCKINLEY AVENUE
 BETWEEN
FORTIETH STREET AND SLAUSON AVENUE
 IN THE
CITY OF LOS ANGELES, CAL.
 In accordance with Ordinances ²¹⁹³⁹/₂₂₄₁₉ (New Series)
 Scale 1 inch = 100 feet
 Homer Humlin, City Engineer June 1911

Note: Land to be condemned colored red

EXHIBIT A-C

3
 C.F. 665 -