

EXHIBIT C

MAP

SHOWING THE LAND TO BE CONDEMNED FOR THE
OPENING OF

SAN PEDRO STREET

BETWEEN

SIXTY-NINTH STREET AND A POINT THIRTY (30) FEET SOUTH OF THE SOUTH LINE OF
SECTION 20 TOWNSHIP 2 SOUTH, RANGE 13 WEST, S. B. B. & M.

IN THE

CITY OF LOS ANGELES, CAL.

In accordance with Ordinances {23,471} New Series
{23,911}

Scale 1 inch = 100 feet

Homer Hamlin, City Engineer

January 1912

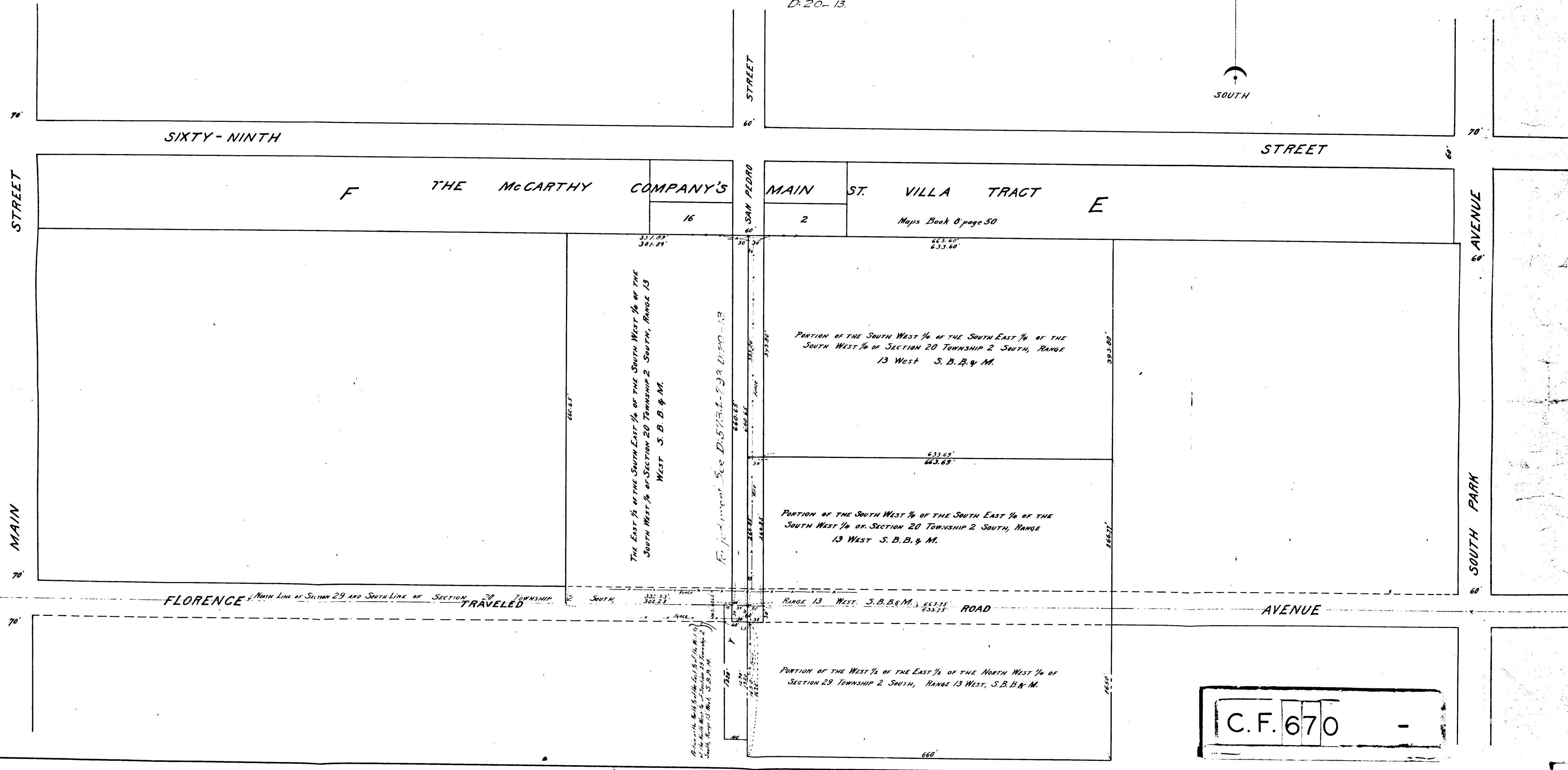
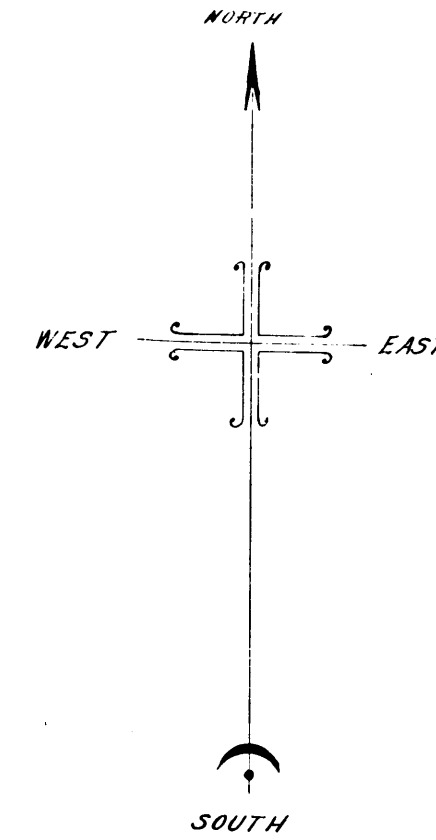
Note:- Land to be condemned colored red

Sh. 7

Final Judgt.

Mar. 13-1913

D. 20-13.



C.F. 670 -