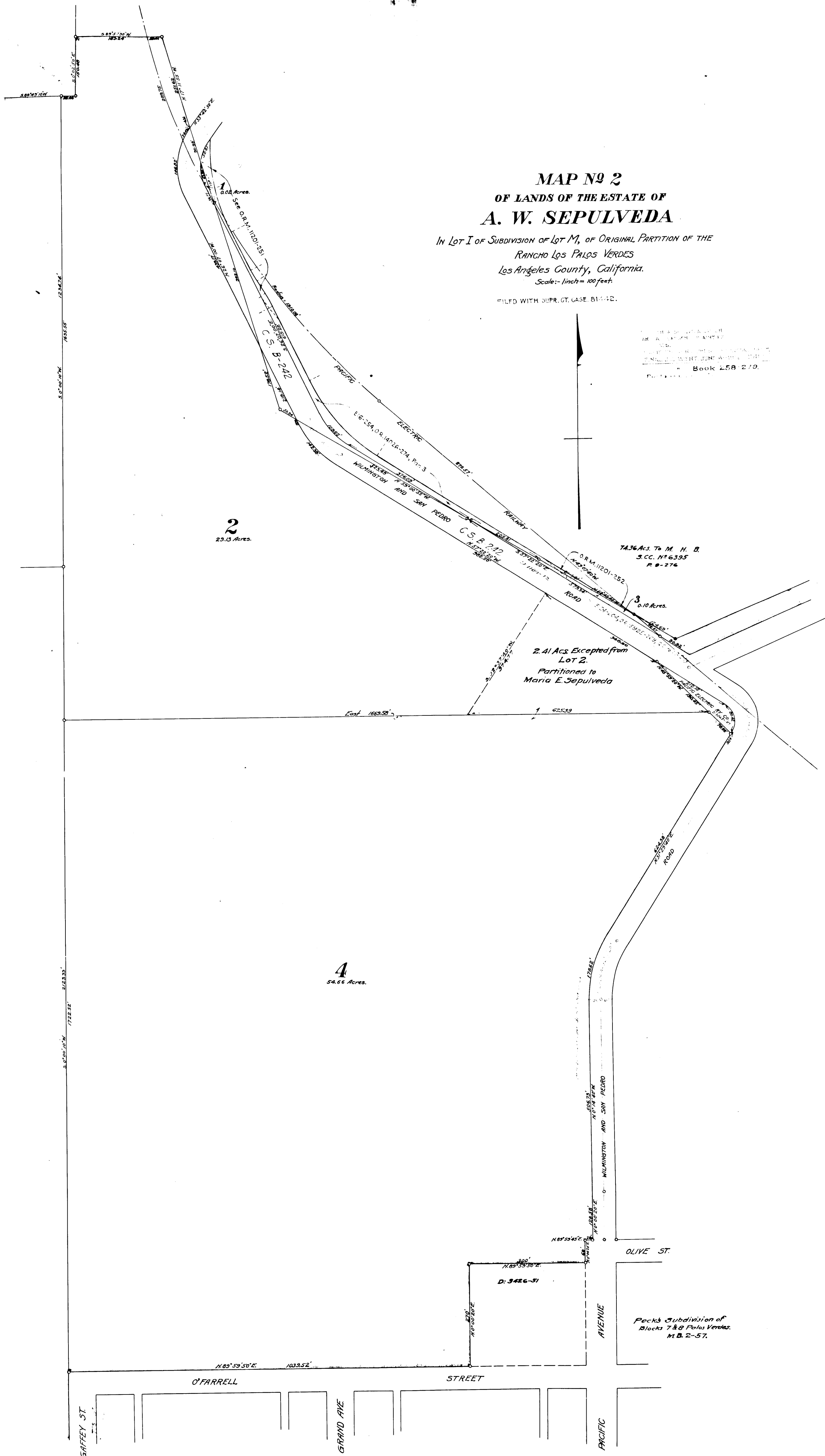


**MAP No 2**  
**OF LANDS OF THE ESTATE OF**  
**A. W. SEPULVEDA**

IN LOT I OF SUBDIVISION OF LOT M, OF ORIGINAL PARTITION OF THE  
 RANCHO LOS PALOS VERDES  
 Los Angeles County, California.  
 Scale: 1 inch = 100 feet.

FILED WITH SUPR. CT. CASE 81542.

THIS MAP IS A COPY OF THE ORIGINAL MAP AS FILED IN THE OFFICE OF THE COUNTY CLERK OF LOS ANGELES COUNTY, CALIFORNIA, IN BOOK 258 270.



C.F. 673  
 2-3