

MAP No 3
OF LANDS OF THE ESTATE OF
A. W. SEPULVEDA

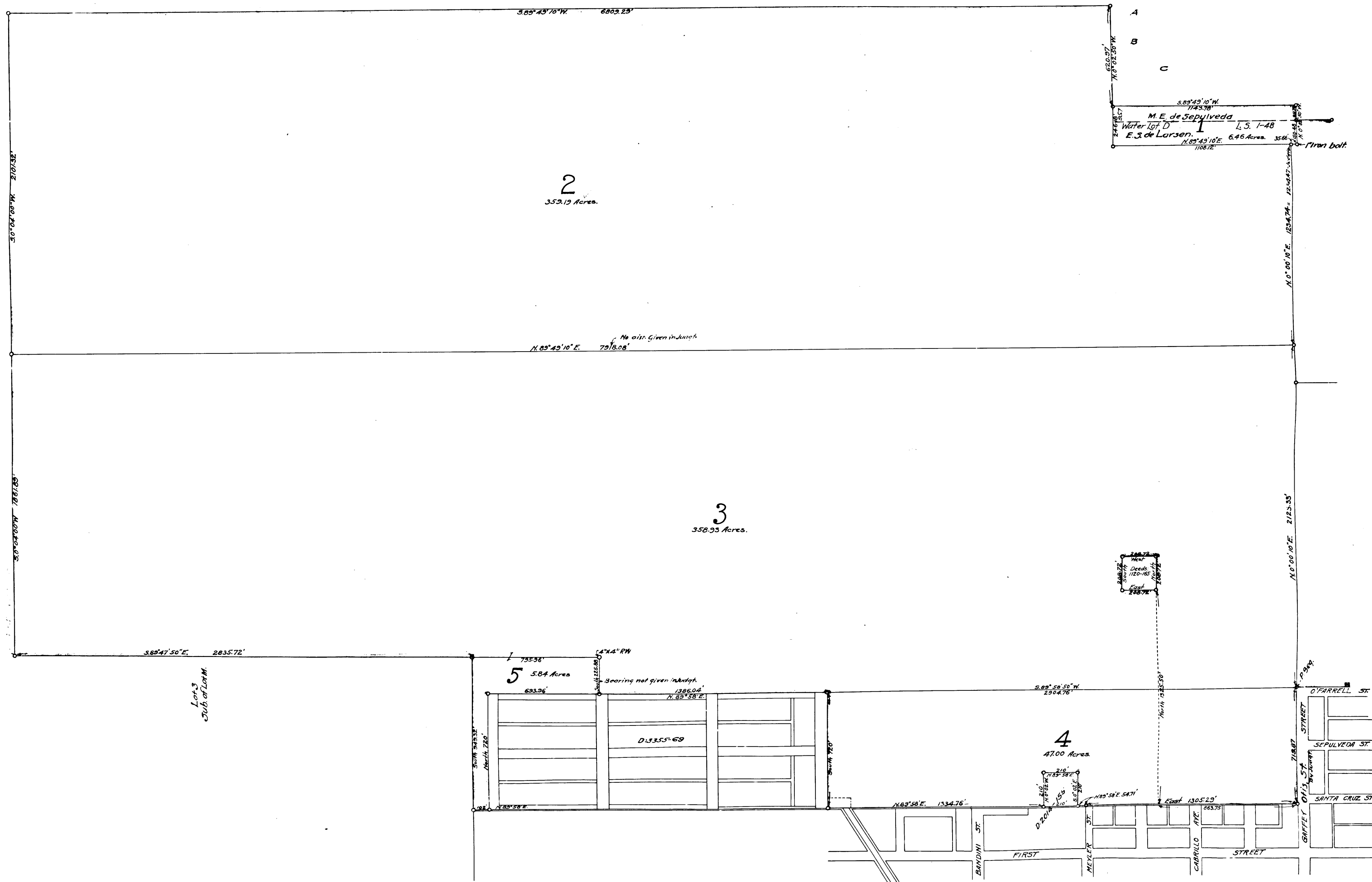
In Lots I and III of Subdivision of Lot M, and in Subdivision
of "Water Lot" in Lot M, of Original Partition of the
RANCHO LOS PALOS VERDES
Los Angeles County, California.

Scale: 1 inch = 300 feet.

FILED WITH SUPR. COURT CASE 81442.

For deeds for Western Ave, see C.S. 2960-2
for land vac of Streets B, Alleys, & A by Deeds of 1916
Part of 2 Q.C. by U.S.A. to Los Angeles City School Dist - E97-180, OR32233-291
Part of 2 Q.C. by U.S.A. to LAULCO - OR 33-184

K



C.F. 673 3-3