

I HEREBY CERTIFY THAT THIS MAP WAS CONFIRMED AND ADOPTED BY THE BOARD OF TRUSTEES OF THE CITY OF ALHAMBRA, ON THE 23RD DAY OF DEC. 1911. O.M. CAULK, CITY CLERK. CITY OF ALHAMBRA.

MAP AND DIAGRAM

SHOWING LAND TO BE ACQUIRED FOR THE OPENING OF FIRST ST. FROM WOODWARD AVE. THE PRESENT NORTHERLY TERMINUS OF FIRST ST. TO ALHAMBRA ROAD, AS PER ORD. N^o 526.

HEREON FIGURES IN BLACK NEXT TO PROPERTY LINES SHOW CORRECT LENGTH OF SAID LINES IN FEET. OTHER FIGURES IN BLACK SHOW THE NUMBERS OF THE LOTS. SOLID BLACK LINES SHOW ORIGINAL LOT LINES. COLORED PORTION SHOWS LAND TO BE TAKEN FOR THE OPENING OF SAID STREET.

SCALE: 1 IN. = 100 FT.

SUPERIOR COURT CASE N^o 88802. CITY OF ALHAMBRA, PLAINTIFF.

Index #8

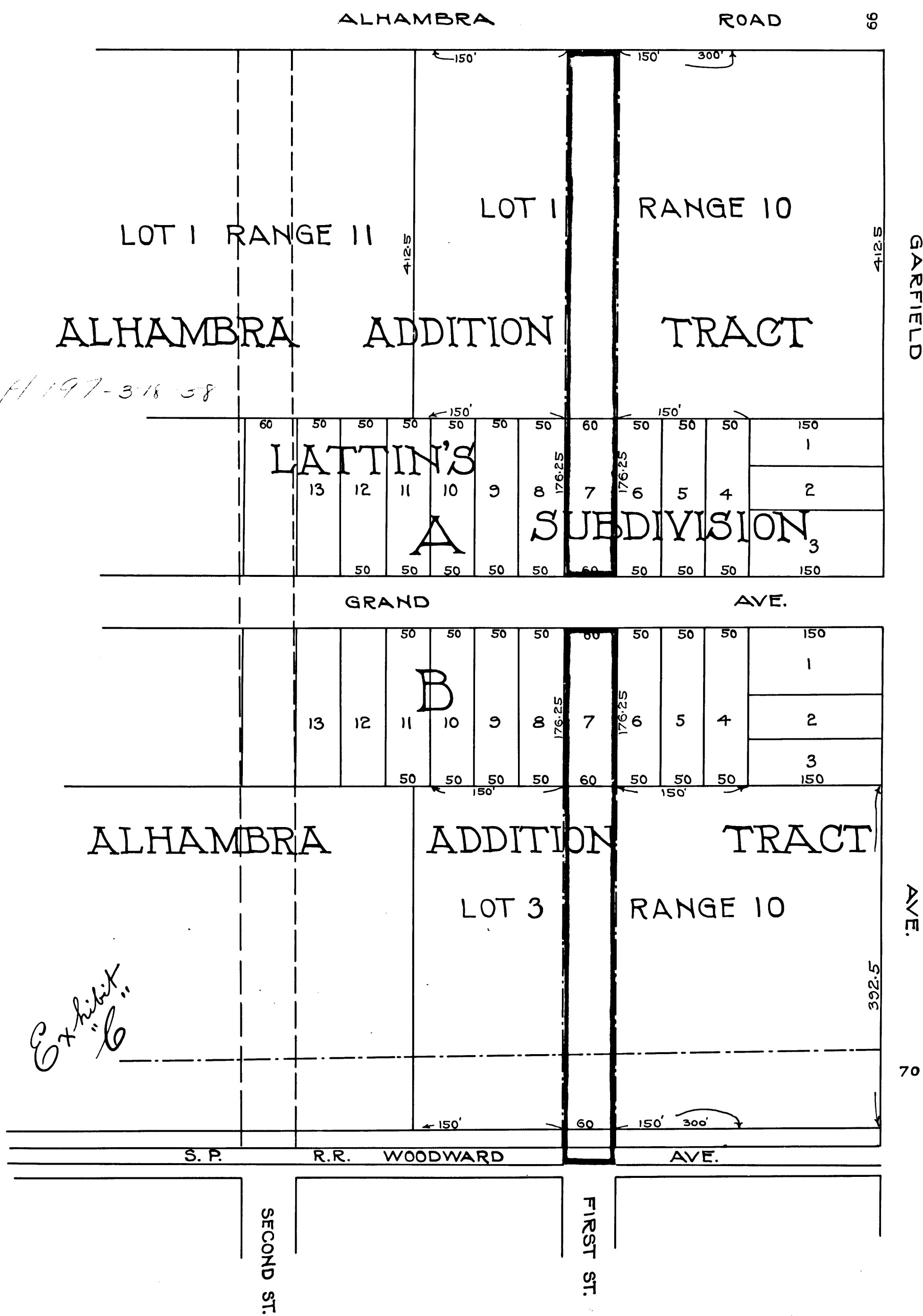
~VS~

SOUTHERN PACIFIC RAILROAD COMPANY, ETAL. DEFENDANTS.

FINAL JUDGMENT RENDERED IN FAVOR OF THE PLAINTIFF, MARCH 31ST 1913.

COPIED BY BEEGAN, DEP. Judge, Book, 27-1-106.

N.P. CONREY, JUDGE OF SUPR. COURT.



H 197-318 58

Exhibit "B"

C.F. 680