

VEMCO
PASADENA, CAL.

10TH
9 S 7

10TH
9 S 6

VEMCO
PASADENA, CAL.

10TH
9 S 7

10TH
9 S 6

MAP
SHOWING A PORTION OF LAND TO BE CONDEMNED
FOR THE OPENING AND EXTENDING OF

EIGHTH STREET.

FROM THE NORTHERLY LINE OF MONTANA AVENUE
TO THE SOUTHERLY LINE OF ALTA AVENUE.

SANTA MONICA, CAL.

JULY 1918.

Scale
1"=200'

W.W. Phelps.
City Engr.

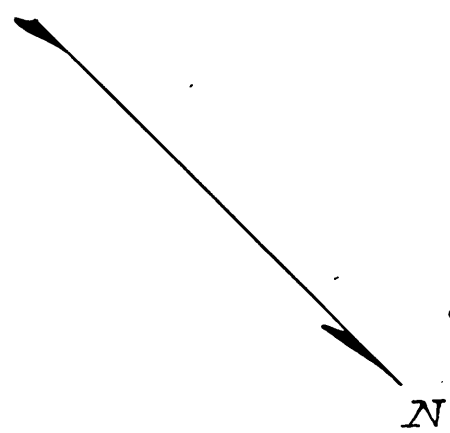
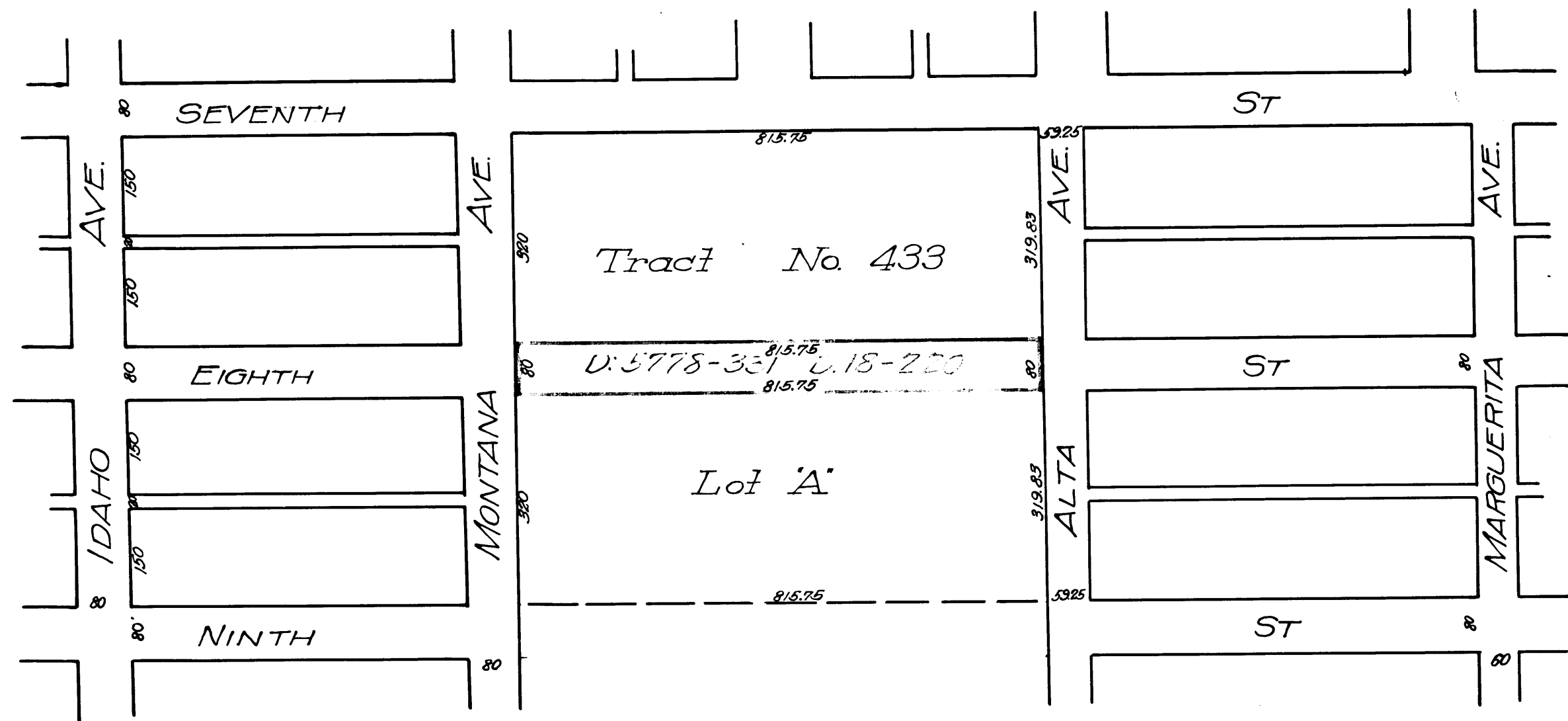


Exhibit 'C'



93407
City of Santa Monica vs. Thomas Higgins et al
Interlocutory Decree - Favor Plaintiff Condemnation
4-28-18
Dismissed July 8, 1918.

C.F. 696