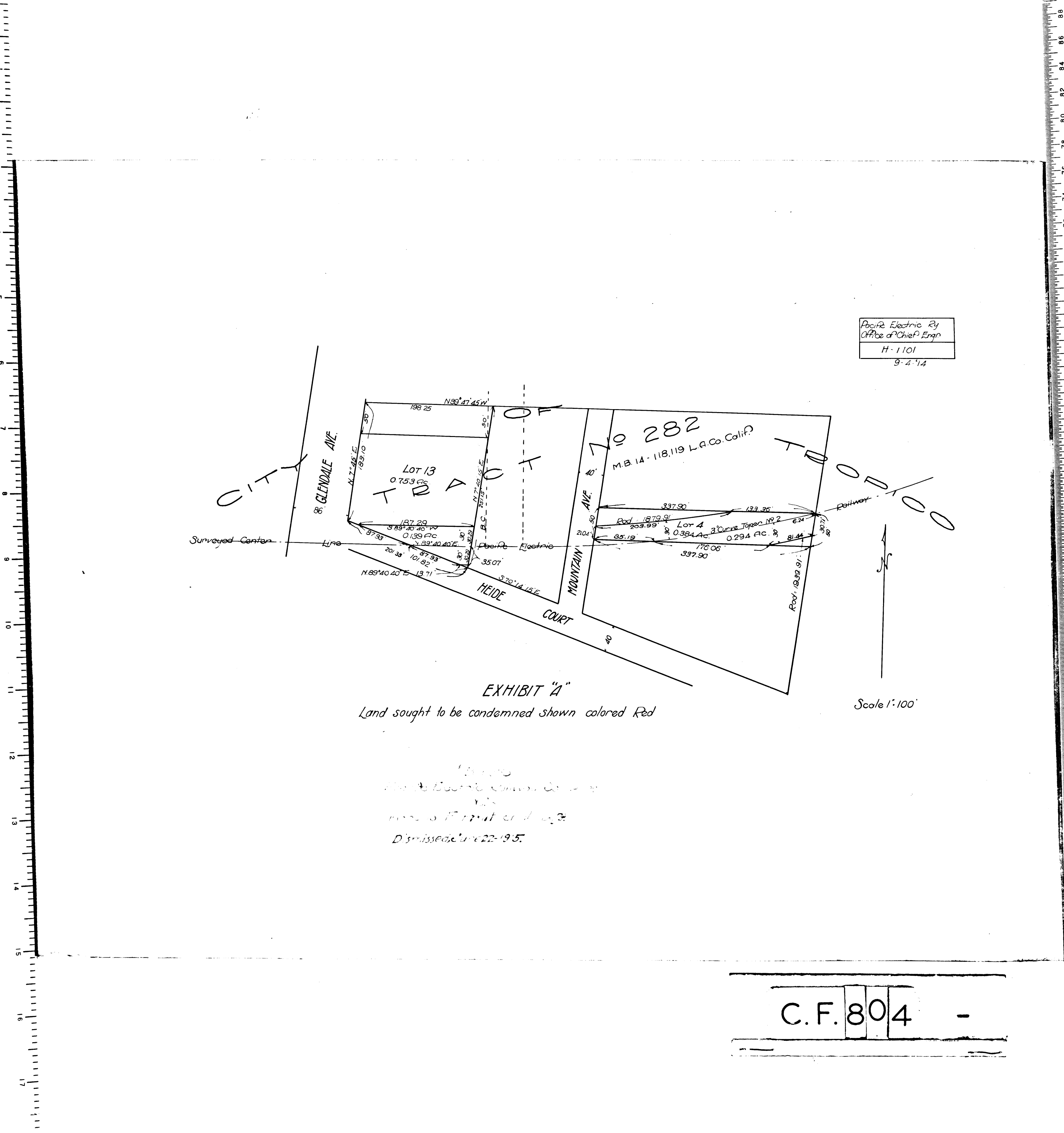




7 S 7
1010

MEMCO
PASADENA CALIF.

50TH



Pacific Electric Ry
Office of Chief Engr.
H-1101
9-4-14

EXHIBIT "A"
Land sought to be condemned shown colored Red

11/1/14
The Pacific Electric Ry
vs
the City of Pasadena
Dismissed June 22-1915

C.F. 804 -



7 S 7
1010

MEMCO
PASADENA CALIF.

50TH