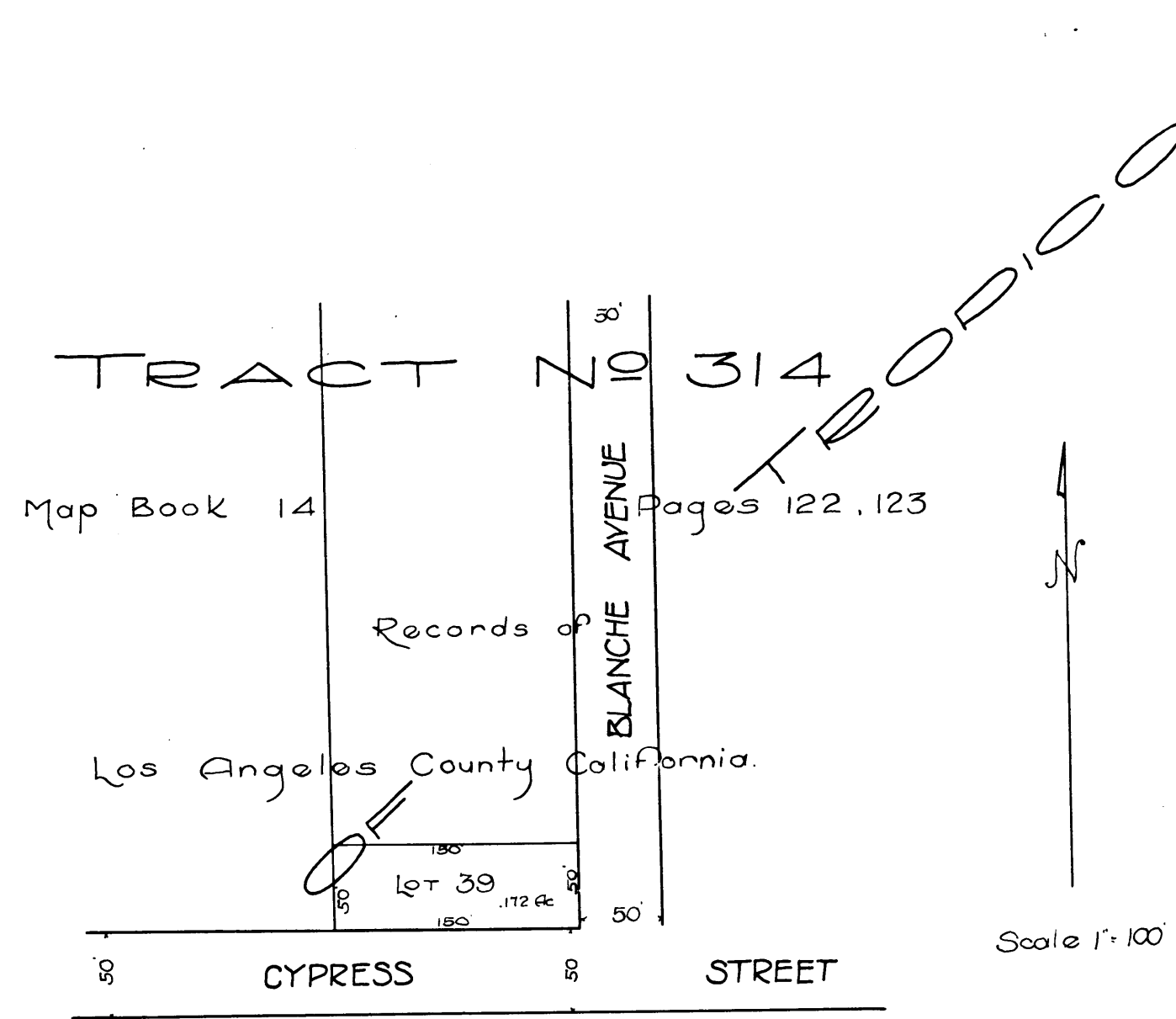


MEMCO PASADENA, CAL. 9 S 7 10TH 15 16

MEMCO PASADENA, CAL. 9 S 7 10TH 15 16



Pacific Electric Ry
 Office of Chief Engineer
 H-1102
 3-4-14.

CITY

EXHIBIT "A"

Land sought to be condemned shown colored red.

1922
 1923
 1924
 Pending May 10th 1924
 Pending Feb. 18th 1925
 Dismissed by Pltff. Feb. 1. 1926

C.F. 806