

PICO STREET

FIFTEENTH STREET

STREET

SIXTEENTH STREET

NORMANDIE AVENUE

WASHINGTON STREET

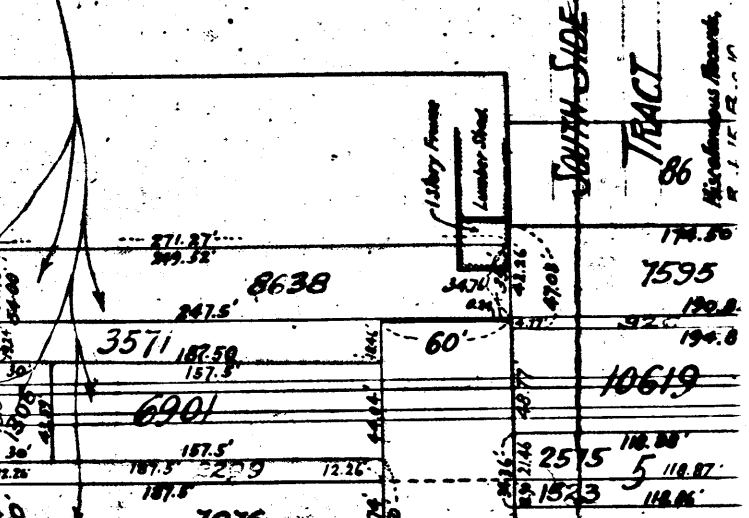
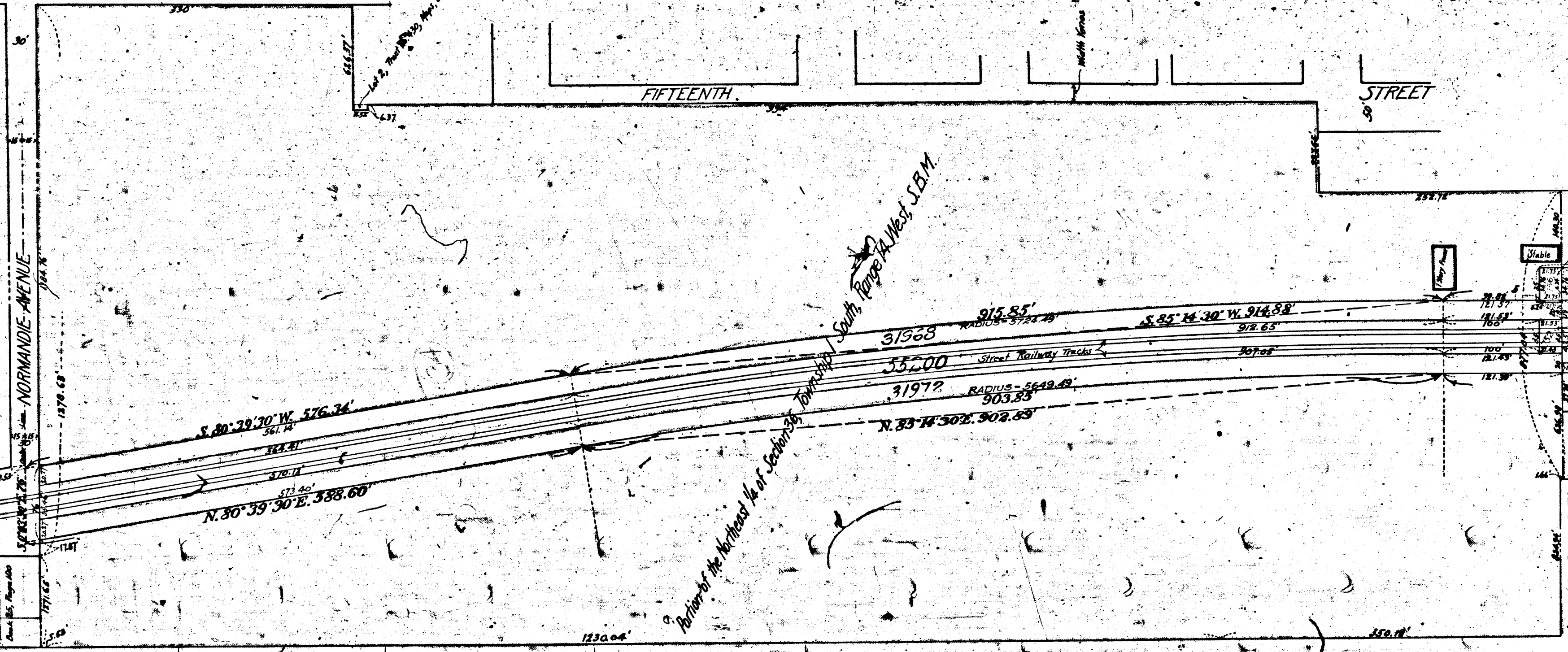
CHESTER STREET

GROVER STREET

(Portion of the Northeast 1/4 of Section 36, Township 1 South, Range 14 West, S.B.M.)

TRACT Maps, Book

SWARTZ & TRIMBY
RESUBDIVISION OF
MILWAUKEE PLATS

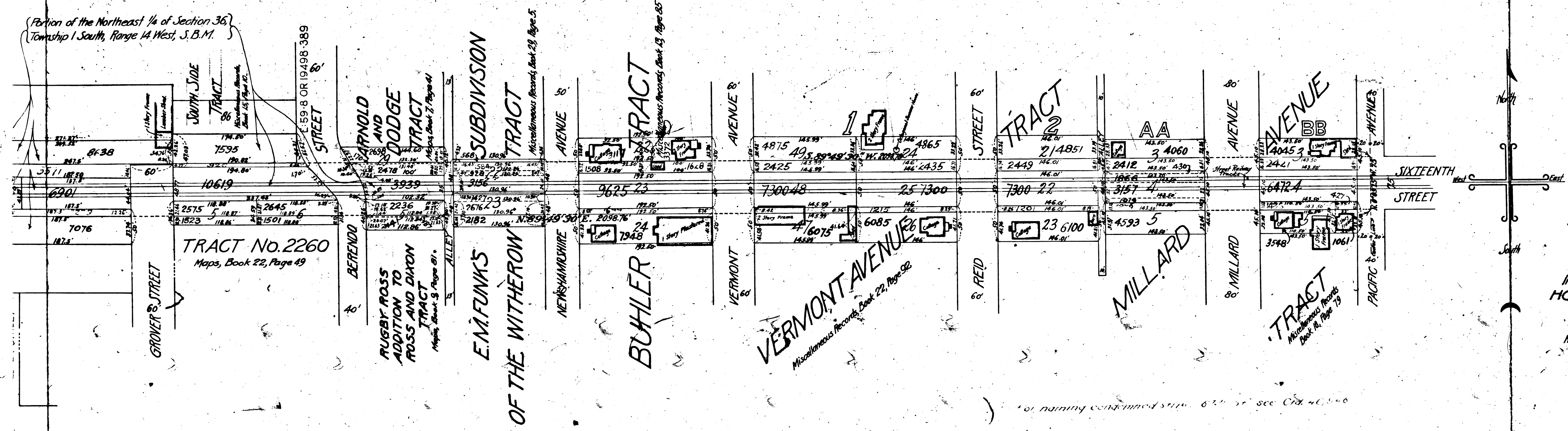


South, Range 14 West, S.B.M.
Portion of the Northeast 1/4 of Section 36, Township 1 South, Range 14 West, S.B.M.

100'

100'

{Portion of the Northeast 1/4 of Section 36,
Township 1 South, Range 14 West, S.B.M.



In ac
HOML

Note:

of naming contained strip 67' or see Cit. 40,640'

Exhibit "C"

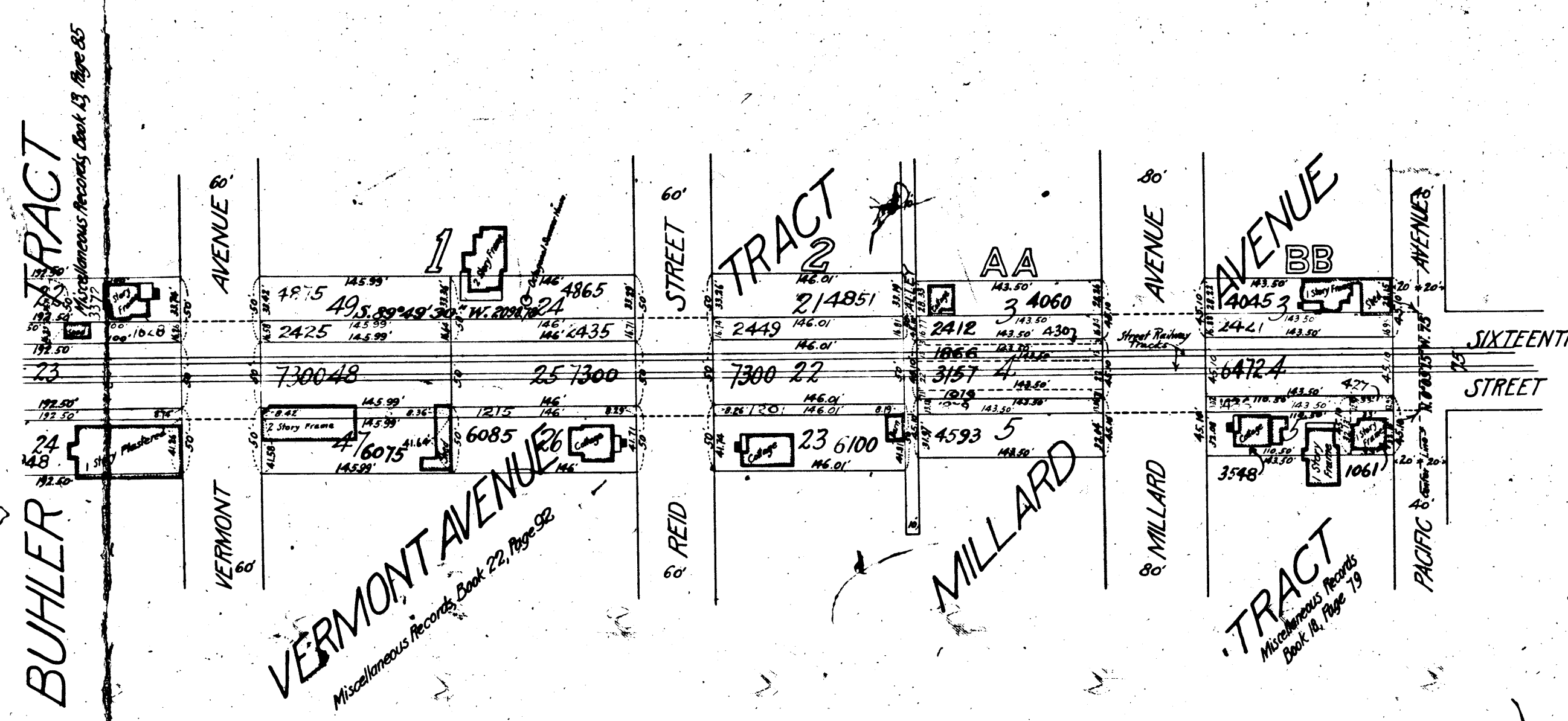
MAP
SHOWING
LAND TO BE CONDEMNED FOR THE
OPENING AND EXTENDING
OF
SIXTEENTH STREET
FROM
PACIFIC AVENUE
TO
NORMANDIE AVENUE
IN THE
CITY OF LOS ANGELES, CALIFORNIA

In accordance with Ordinances Numbers 31147 and 31568 (New Series)
HOMER HAMLIN, CITY ENGINEER JANUARY, 1915
Scale 1 inch = 80 feet

Note:
Land to be condemned shown colored red
Dotted lines and figures show actual holdings where they
differ from recorded subdivisions.

12106
City of Los Angeles Title
vs
Abram Sheermaker et al. Ex

For Final Judgement in favor of Plaintiff rendered July 13, 1920, for
the 75' strip shown on this map, see U.S. 113 D. 7248-234



Remaining condemned strip 67 1/2' see City 40346