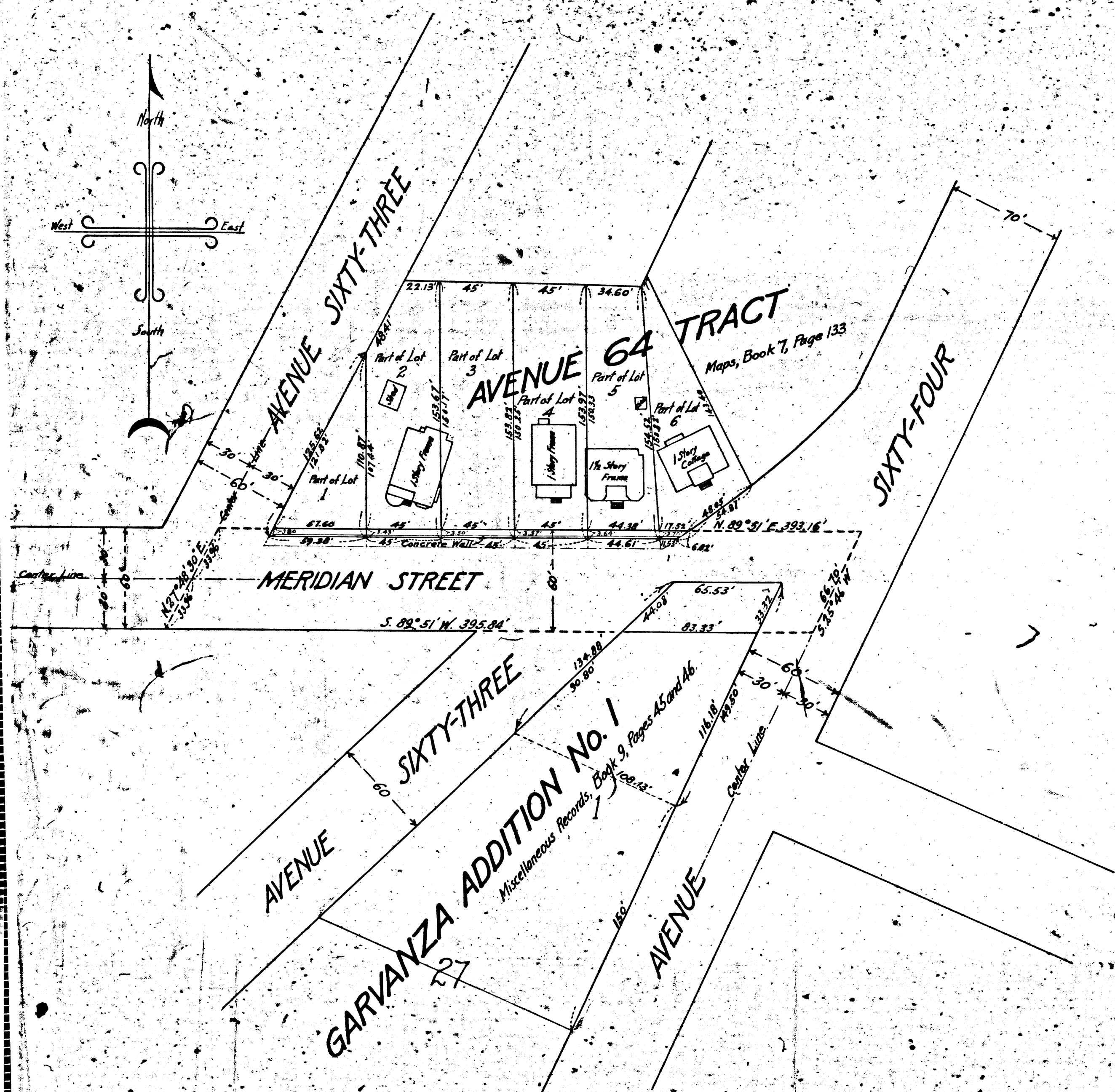


# 22218

City of Los Angeles - PH  
vs  
Amos B. Caldwell - et al - Def



MAP  
SHOWING  
THE LAND TO BE CONDEMNED  
FOR THE WIDENING OF  
**MERIDIAN STREET**  
BETWEEN  
**AVENUE SIXTY-THREE**  
AND  
**AVENUE SIXTY-FOUR**  
IN THE  
**CITY OF LOS ANGELES, CAL.**

In Accordance with Ordinances Numbers 31224 and 31590 (New Series)  
HOMER HAMLIN, City Engineer February, 1915.  
Scale 1 inch = 50 feet

Land to be condemned shown colored red.  
Dotted lines and figures show where actual holdings  
differ from recorded subdivisions.