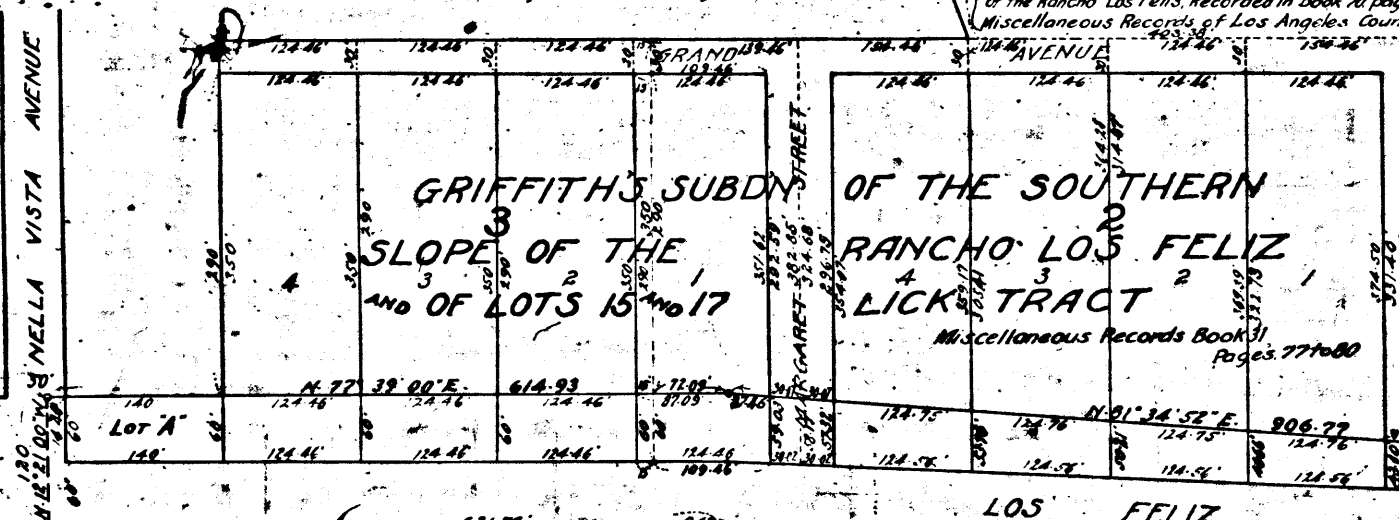


GRIFFITH'S SUBDIVISION
OF THE SOUTHERN SLOPE OF
THE RANCHO LOS FELIS

Miscellaneous Records Book 70, Pages 26 to 30

TRACT N° 2193
Maps Book 24, Page 64

Vacated by order of the Board of Supervisors
as per map of Griffith's Subdivision of the Southern Slope
of the Rancho Los Felis, Recorded in Book 70, pages 26 to 30
Miscellaneous Records of Los Angeles County



GRIFFITH'S SUBDIVISION
OF THE SOUTHERN
SLOPE OF THE
RANCHO LOS FELIS
AND OF LOTS 15 AND 17
OF THE LICK TRACT

Miscellaneous Records Book 31, Pages 77 to 80

WEST PORTION OF THE LICK TRACT
LOS FELIS RO.

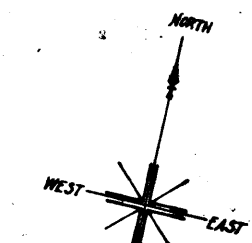
Miscellaneous Records Book 7, Page 88

SUPPLEMENTAL MAP
OF BLOCK 2 IVANHOE

Miscellaneous Records Book 17, Page 63

IVANHOE

Miscellaneous Records Book 17, Pages 64 to 68



822231
City of Los Angeles
Annie D. Barkins, City Engineer

MAP
SHOWING THE LAND TO BE CONDEMNED FOR
THE WIDENING OF
LOS FELIZ AVENUE
BETWEEN
NELLA VISTA AVENUE
AND THE WESTERLY LINE OF
GRIFFITH PARK
CITY OF LOS ANGELES, CALIF.

In accordance with Ordinances Nos 30669 and 31305 (New Series).
HOMER HAMLIN, City Engineer. January 1915
Scale 100 feet to 1 inch

NOTE: Land to be condemned shown colored red
Dotted lines and figures show property lines
and dimensions in those cases where the actual
holdings differ from the recorded subdivisions.