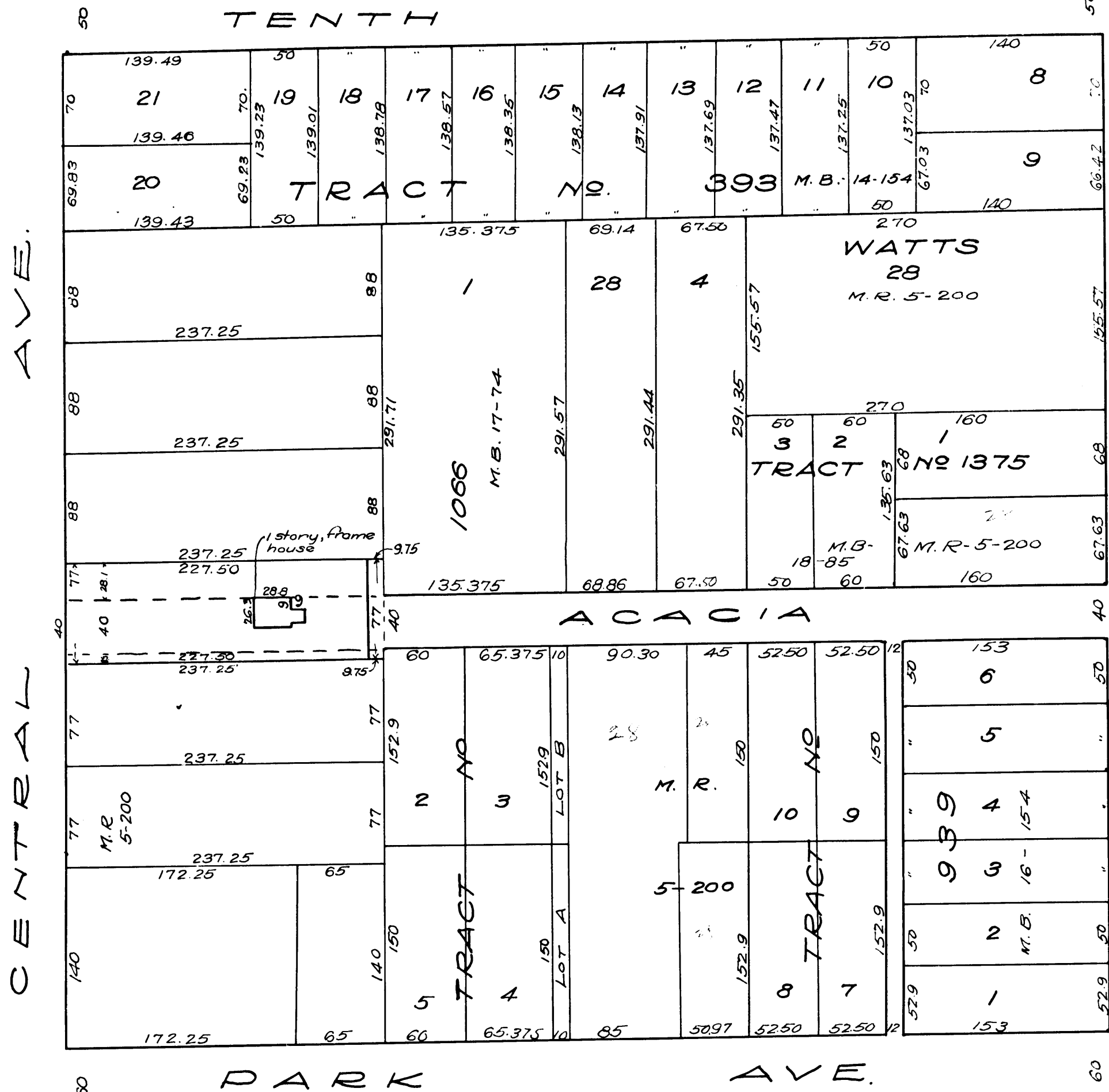


C.F. 818

EXHIBIT "C"



Scale 1"=100'

Final Judgment for Plaintiff April 1916.
 Judgt. Book 367-61.
MAP

Showing land sought to be condemned for the opening and extending of ACACIA AVENUE in the City of Tropic from the present westerly termination of ACACIA AVENUE to the easterly line of CENTRAL AVE. in said City, in accordance with ORDINANCE Number 98
 F.V. Ashton - City Engineer of Tropic.
 Scale 1 inch = 100 feet
 Note: Red tinting shows land sought to be condemned.
 See D: 9-275-F.