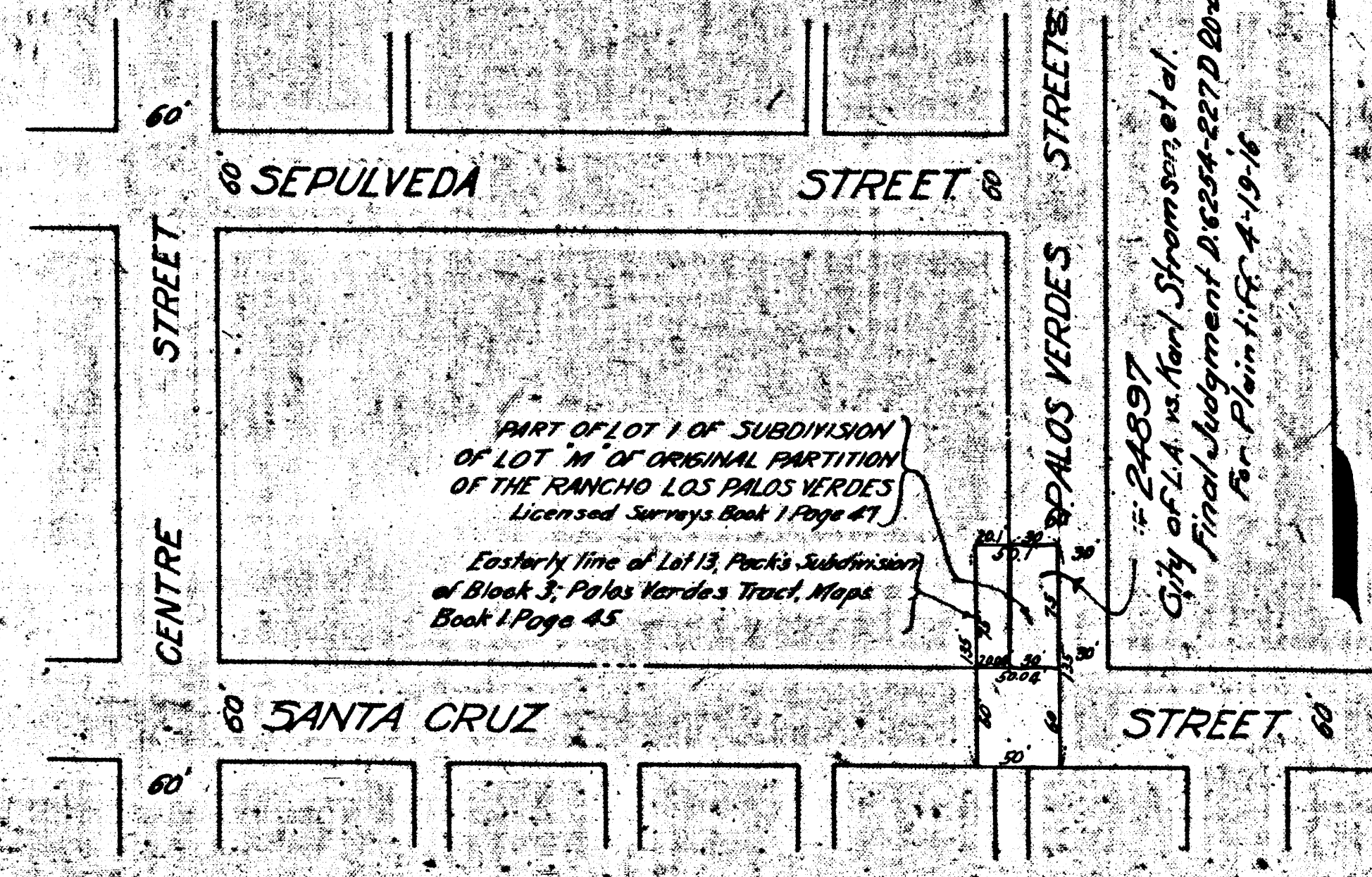


24898
City of Los Angeles - Plaintiff
vs.
Ada Stromson - Defendant
Interlocutory Judgment - Nov. 12, 1915
Final Judgment D. 6240-947 D:20-210
4-19-1916.
For Plaintiff

MAP
SHOWING

LAND TO BE CONDEMNED
FOR THE OPENING AND EXTENDING OF
SANTA CRUZ STREET
BETWEEN
CENTRE STREET AND PALOS VERDES STREET
IN THE
CITY OF LOS ANGELES CAL.

In accordance with Ordinances Nos 31744 and 32123 (New Series)
Homer Hamlin, City Engineer. May, 1915.
Scale: 1 inch = 100 feet.
Note: Land to be condemned shown colored red.



24897
City of L.A. vs. Karl Stromson, et al.
Final Judgment D:5254-227 D:20-211
For Plaintiff 4-19-16