

AMAR'S SUBDIVISION

PECK'S SUBDIVISION

AVENUE

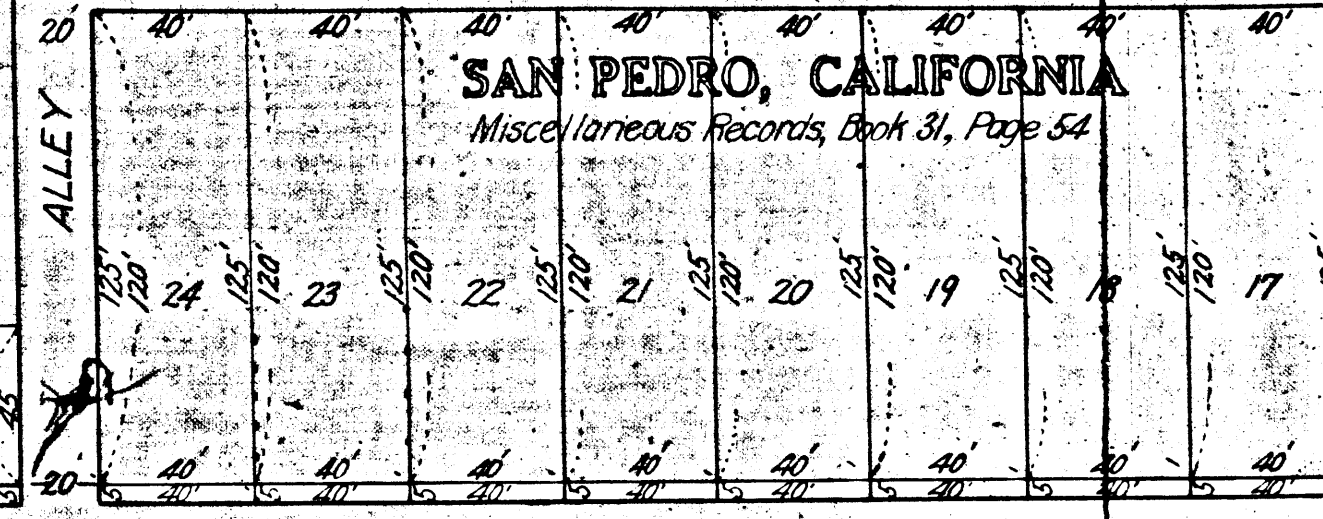
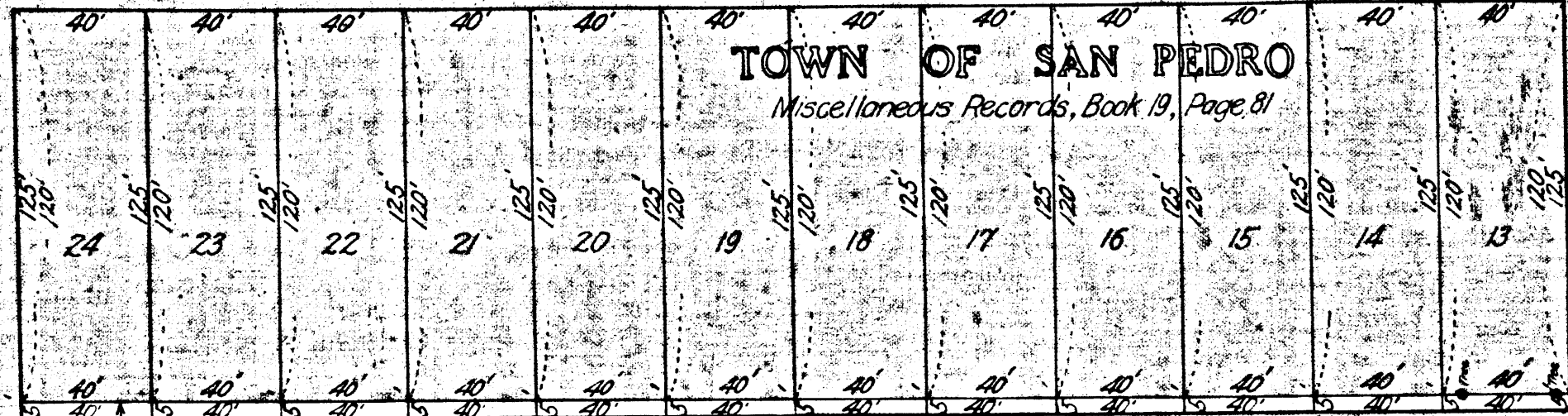
STREET

ALLEY OF BLOCK 14

OF BLOCK 33 ALLEY

TOWN OF SAN PEDRO
Miscellaneous Records, Book 19, Page 81

SAN PEDRO, CALIFORNIA
Miscellaneous Records, Book 31, Page 54



FOURTEENTH

PACIFIC

MESA

JORDAN'S SUBDIVISION

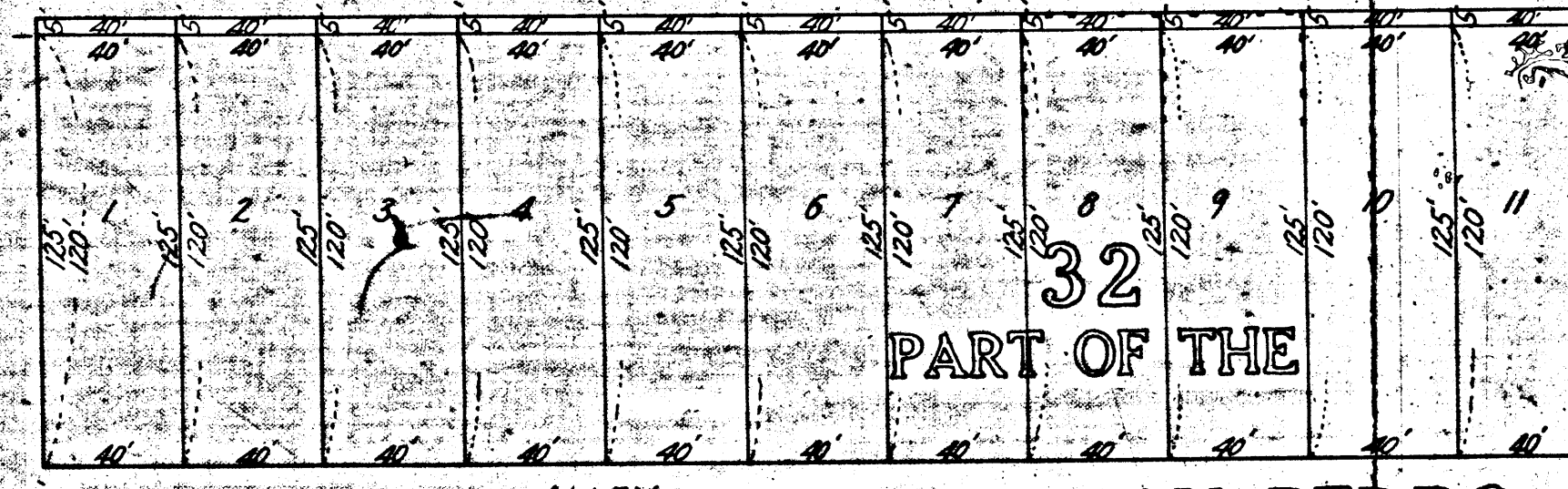
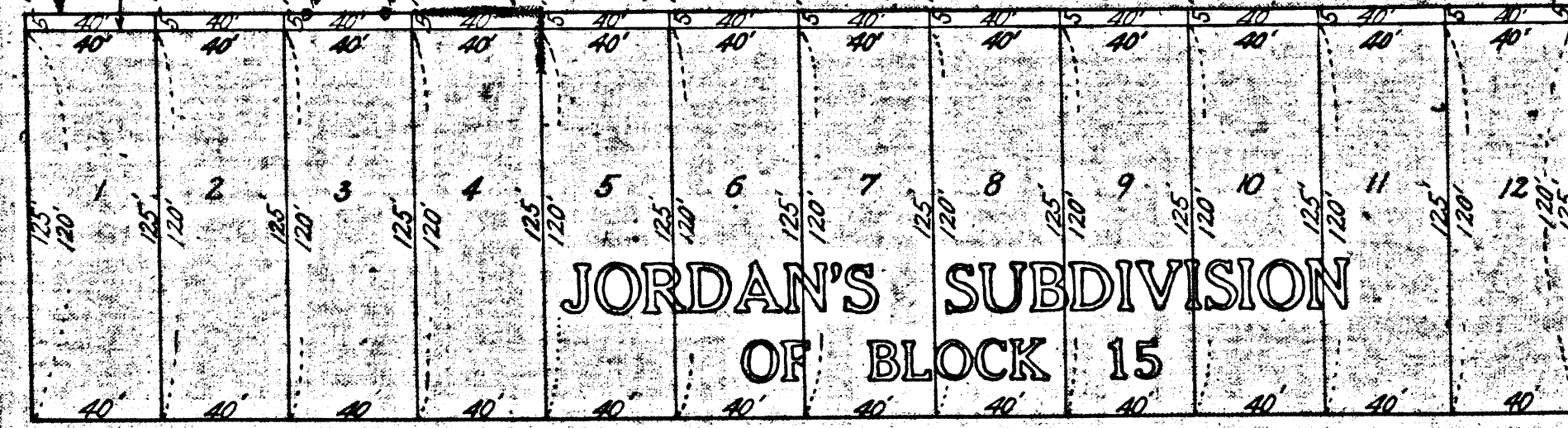
32
PART OF THE

ALLEY TOWN OF SAN PEDRO

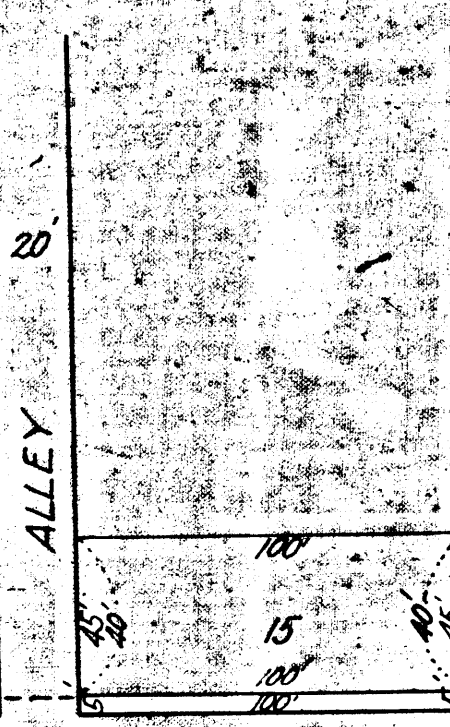
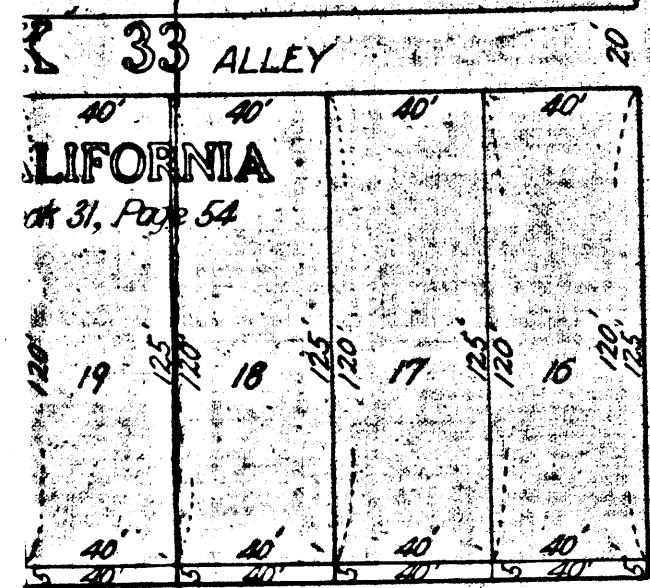
ALLEY TOWN OF SAN PEDRO

Miscellaneous Records, Book 19, Page 80

Miscellaneous Records, Book 17, Page 31



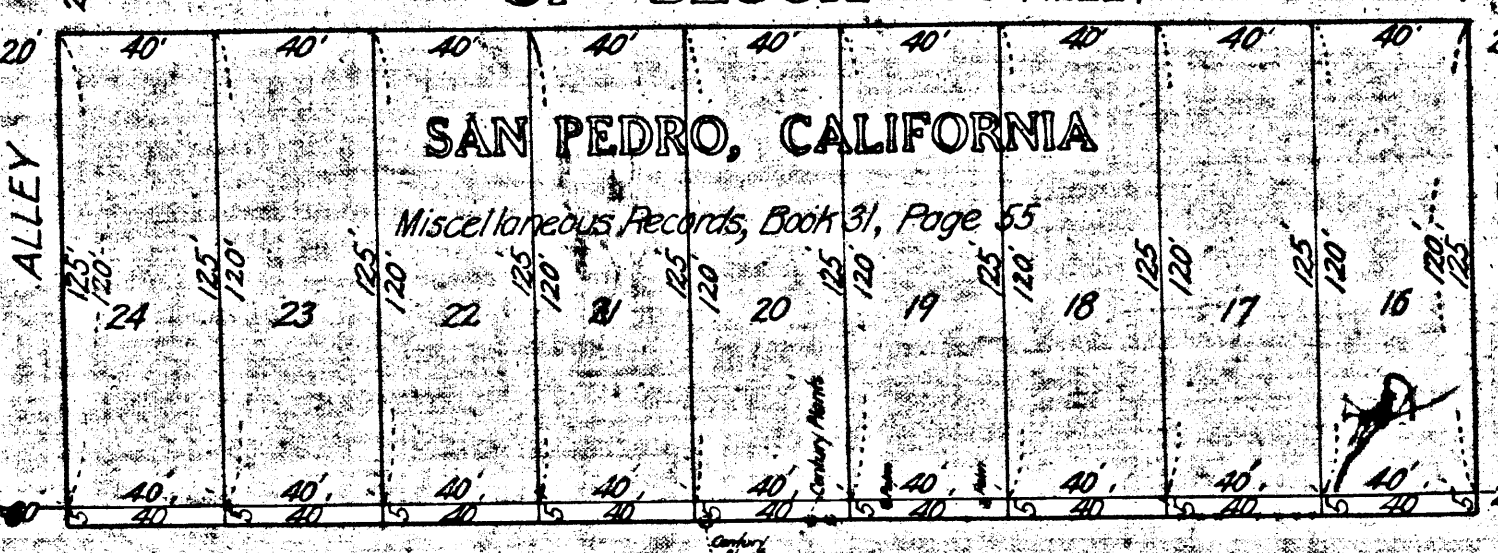
DIVISION



STREET

PECK'S SUBDIVISION

OF BLOCK 60 ALLEY



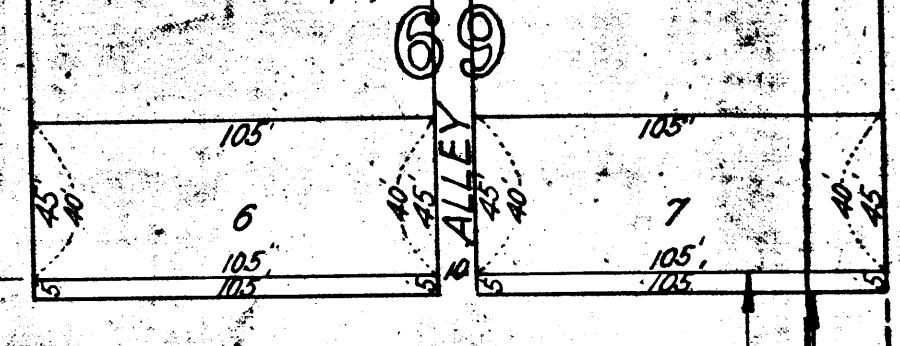
STREET

PECK'S SUBDIVISION

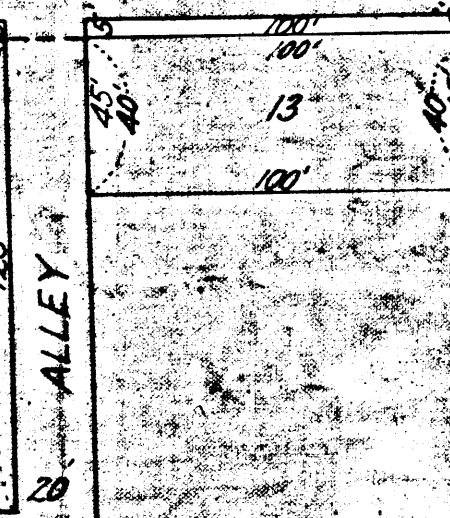
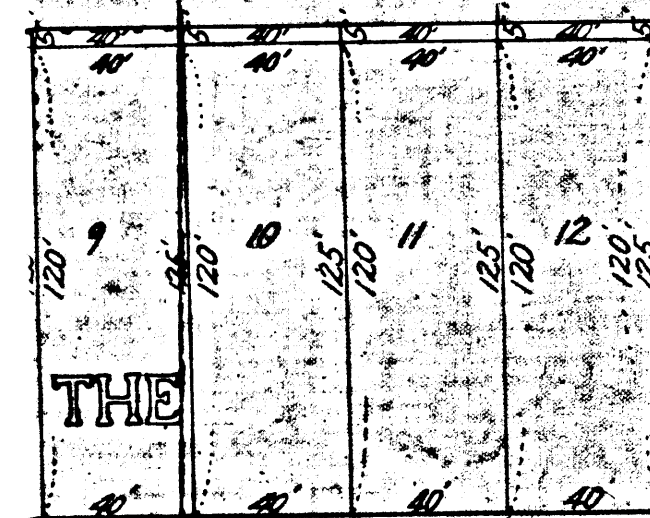
OF BLOCK 68 OF

CITY OF SAN PEDRO

Maps, Book 2, Page 60



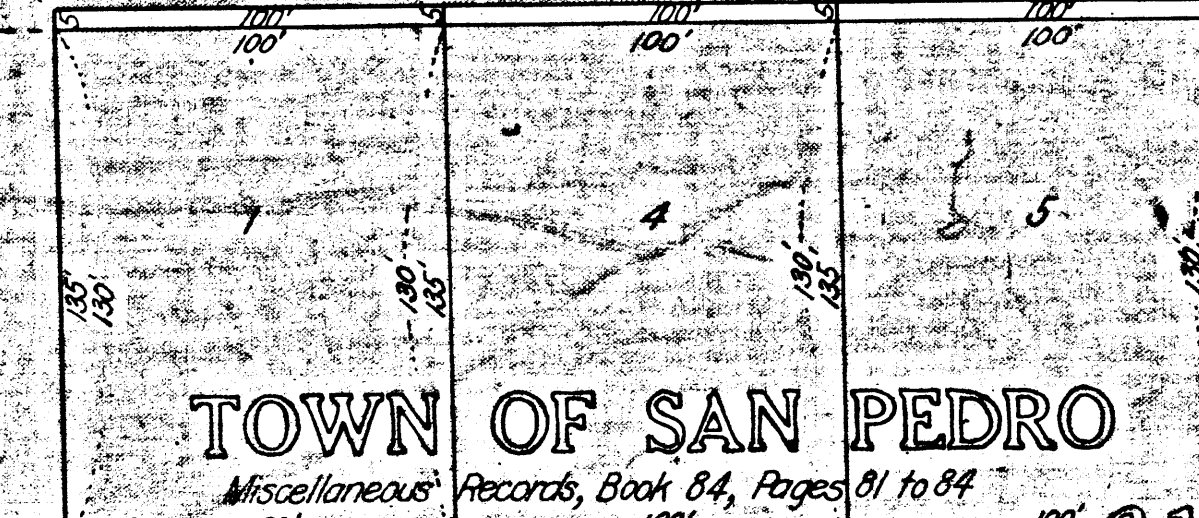
STREET



STREET

TOWN OF SAN PEDRO

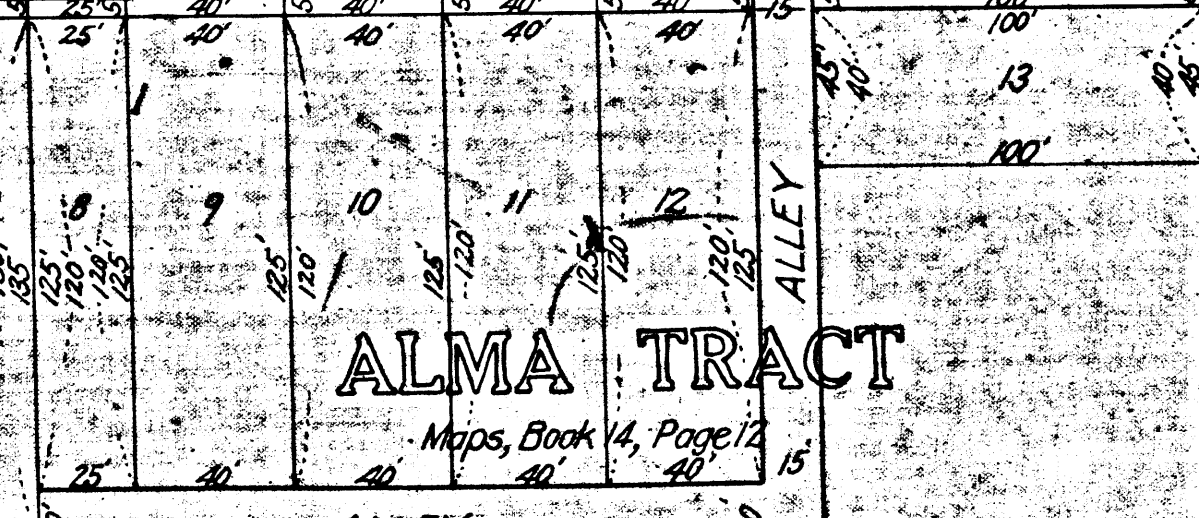
Miscellaneous Records, Book 84, Pages 81 to 84



STREET

ALMA TRACT

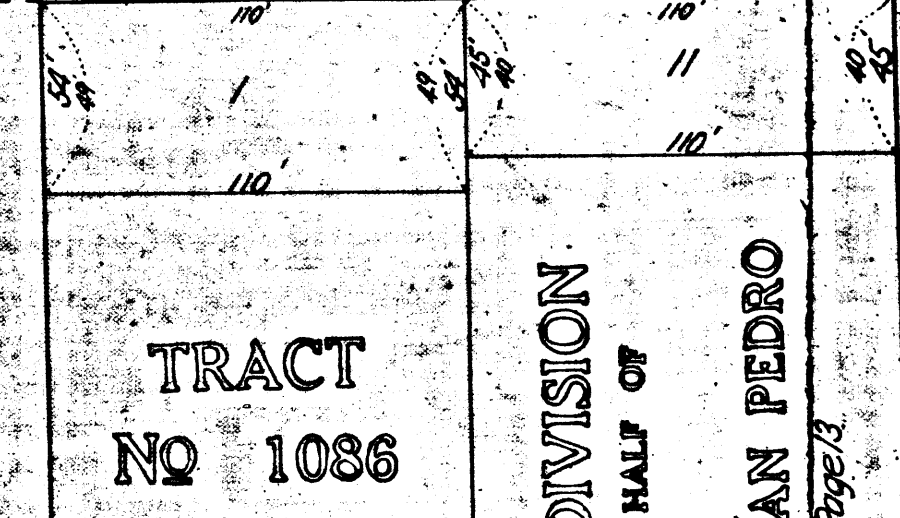
Maps, Book 14, Page 12



STREET

TRACT NO 1086

Maps, Book 17, Page 56



STREET

PECK'S SUBDIVISION

OF THE EAST ONE-HALF OF

BLOCK 66

TOWNSITE OF SAN PEDRO

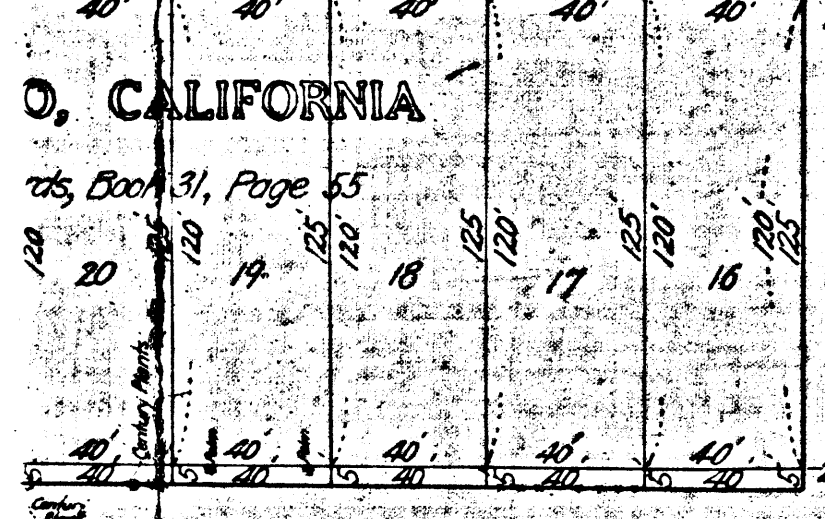
Maps, Book 4, Page 3

68

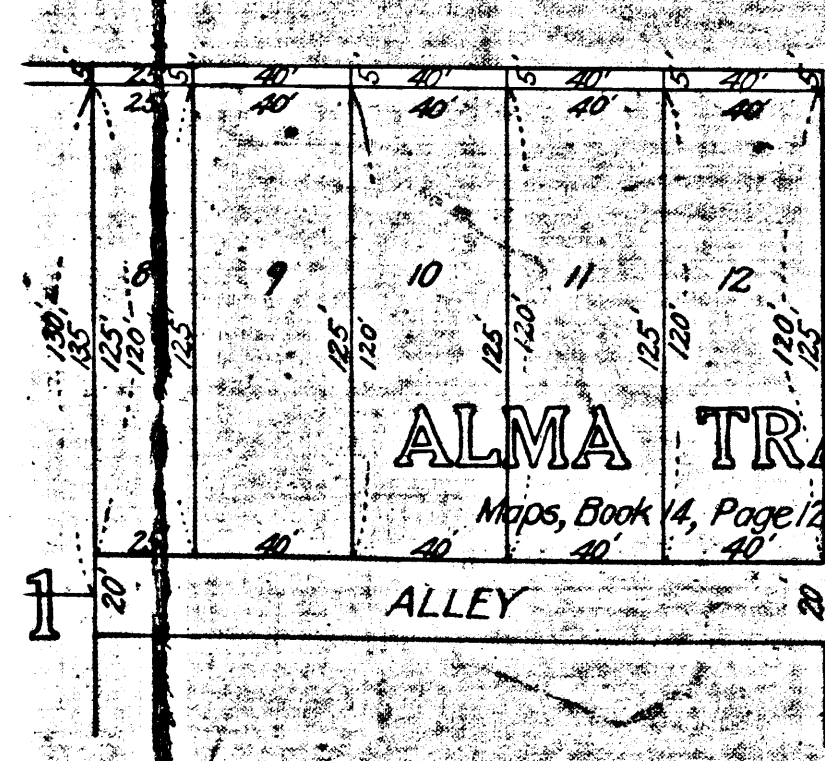
B 25026
 City of Los Angeles - Plaintiff
 vs.
 Charles Addison et al. - Defendants

SUBDIVISION

LOCK 60 ALLEY



STREET

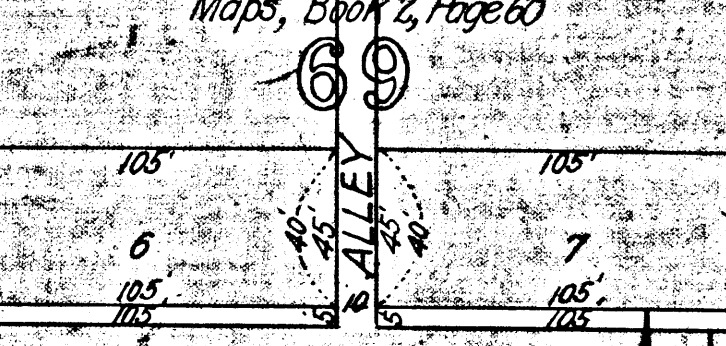


ALLEY

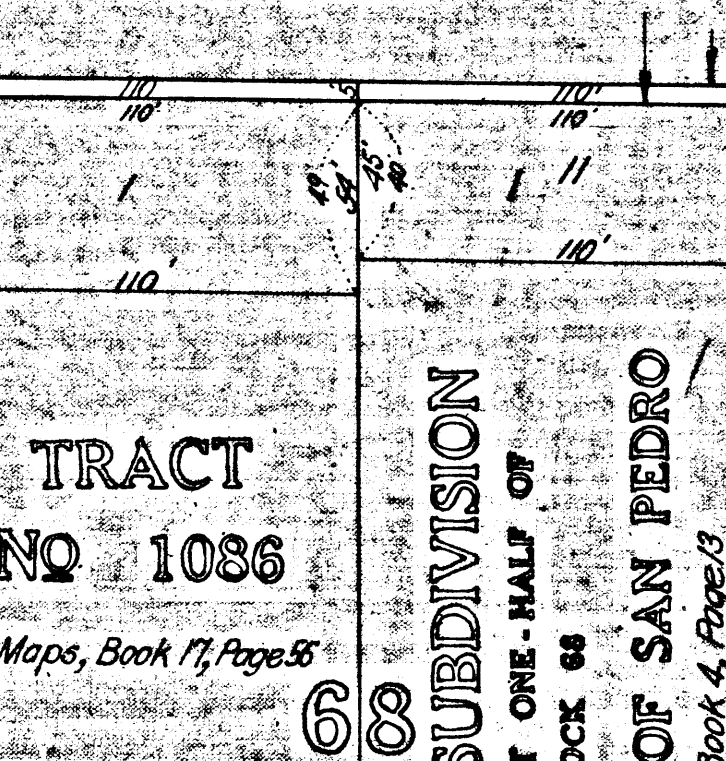
PECK'S SUBDIVISION

OF BLOCK 69 OF

CITY OF SAN PEDRO
 Maps, Book 2, Page 60



STREET



STREET

PECK'S SUBDIVISION
 OF THE EAST ONE-HALF OF
 BLOCK 68
 TOWNSITE OF SAN PEDRO
 Maps, Book 4, Page 13

PALOS VERDES

BEACON

MAP
 SHOWING THE LAND TO BE
 CONDEMNED FOR THE WIDENING OF
FOURTEENTH STREET
 FROM
BEACON STREET TO PACIFIC AVENUE
 (SAN PEDRO DISTRICT)
 IN THE
CITY OF LOS ANGELES, CAL.
 In accordance with Ordinances Nos. 31431 and 31760 (New Series),
 Homer Hamlin, City Engineer April, 1915.

Scale: 1 inch = 50 feet

Note: Land to be condemned shown colored red.

