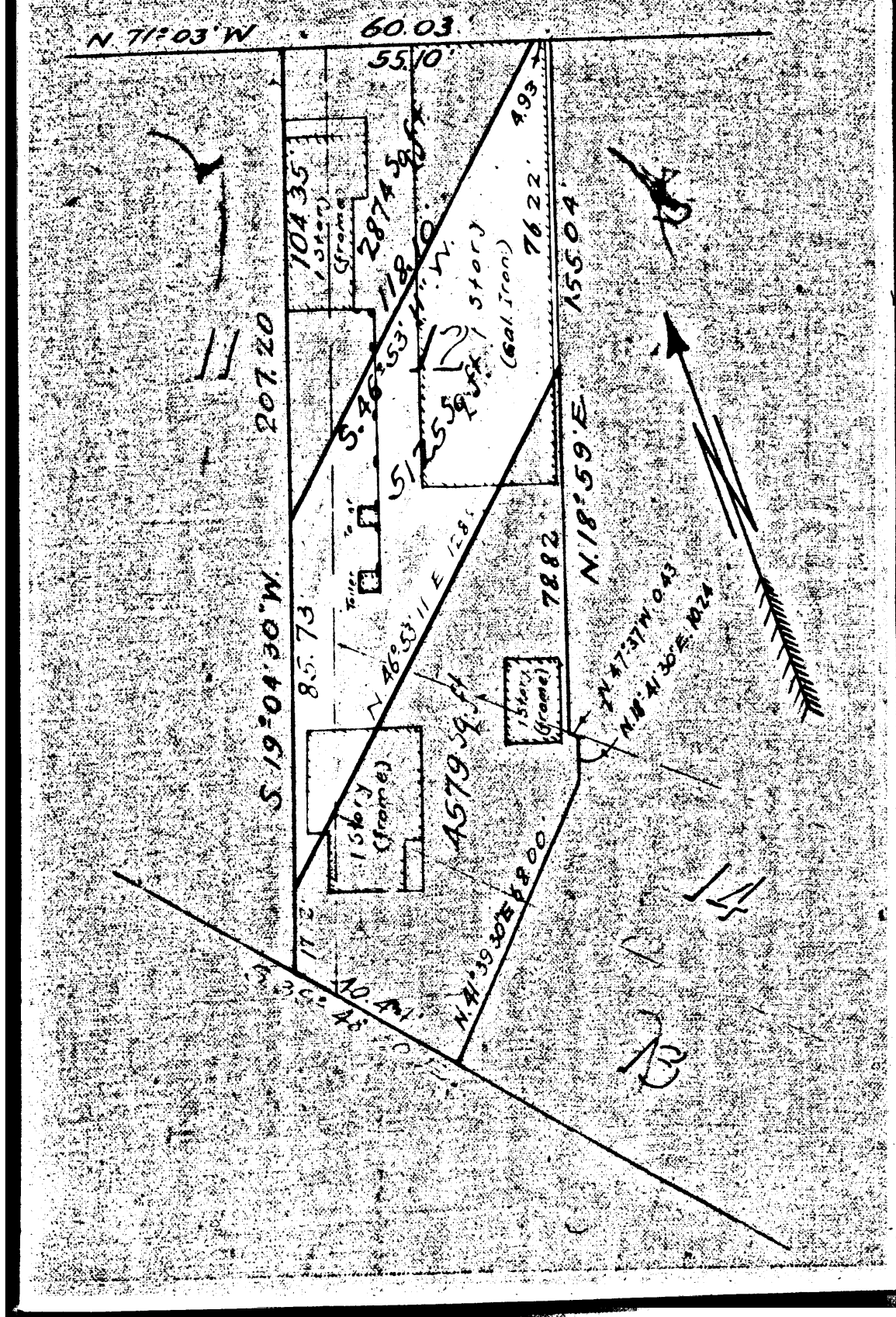


Exhibit A & B. 2548A
 LOT 12 & portion of Lots 11, 13 & 14
FESCHKE TRACT
 Miscellaneous Records 31:45
 City of Los Angeles, Calif.
 Scale 40ft. to one inch
 Industrial Terminal Ry Co. P.H.F.
 VS
 Nettie Steinhilber, Etal. Def. Condemnation
 Case pending. Set for trial Feb 3rd 1916.
 Case Dismissed Oct 16, 1916

MACY ST.



C
 F
 1834