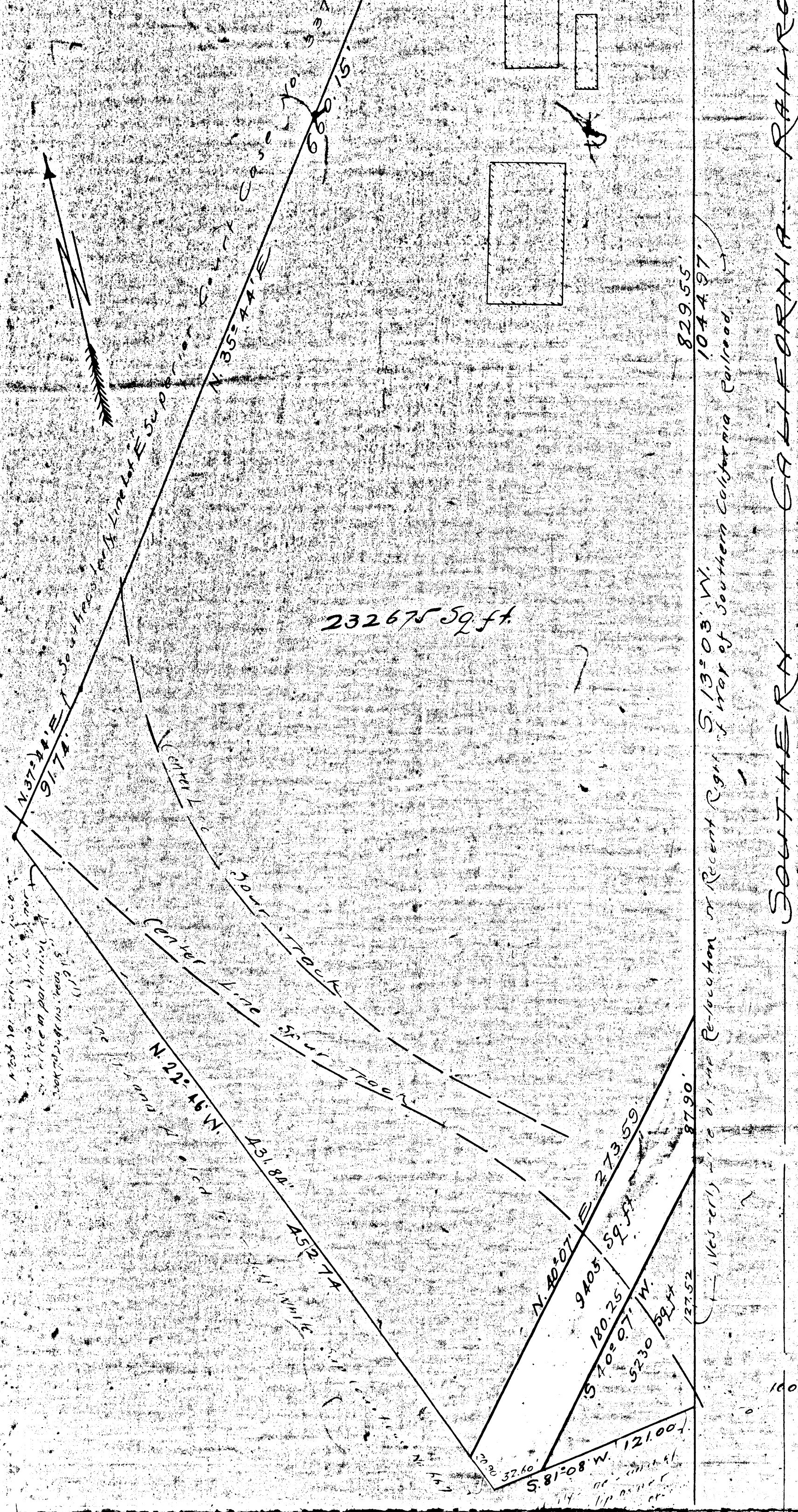


Exhibit A: B 25435
 Industrial Terminal Railway Co. ET
 vs.
 Annotated Oil Co. et al. Def
 Condemnation Case pending Jan 1st 1913
 Case Off Calendar May 10th 1921
 Pending Mar 11, 1922
 Case Dismissed May 7th 1924

Portion of Tract of Land
 allotted to LUCY GILLMORE,
 containing 28.6 Acres,
 by decree of partition
 in Case No. 67 Superior Court
 of Los Angeles County
 in the
 City of Los Angeles, Calif.
 Scale 40 ft. to one inch

ALHAMBRA AVE

N. 83° 07' E.
 89.66'



232675 sq. ft.

829.55
 1044.97

S. 13° 03' W. 1044.97'
 (1161-erl) 1161-erl
 of map of Southern California Railroad

SOUTHERN CALIFORNIA RAILROAD

15 1815