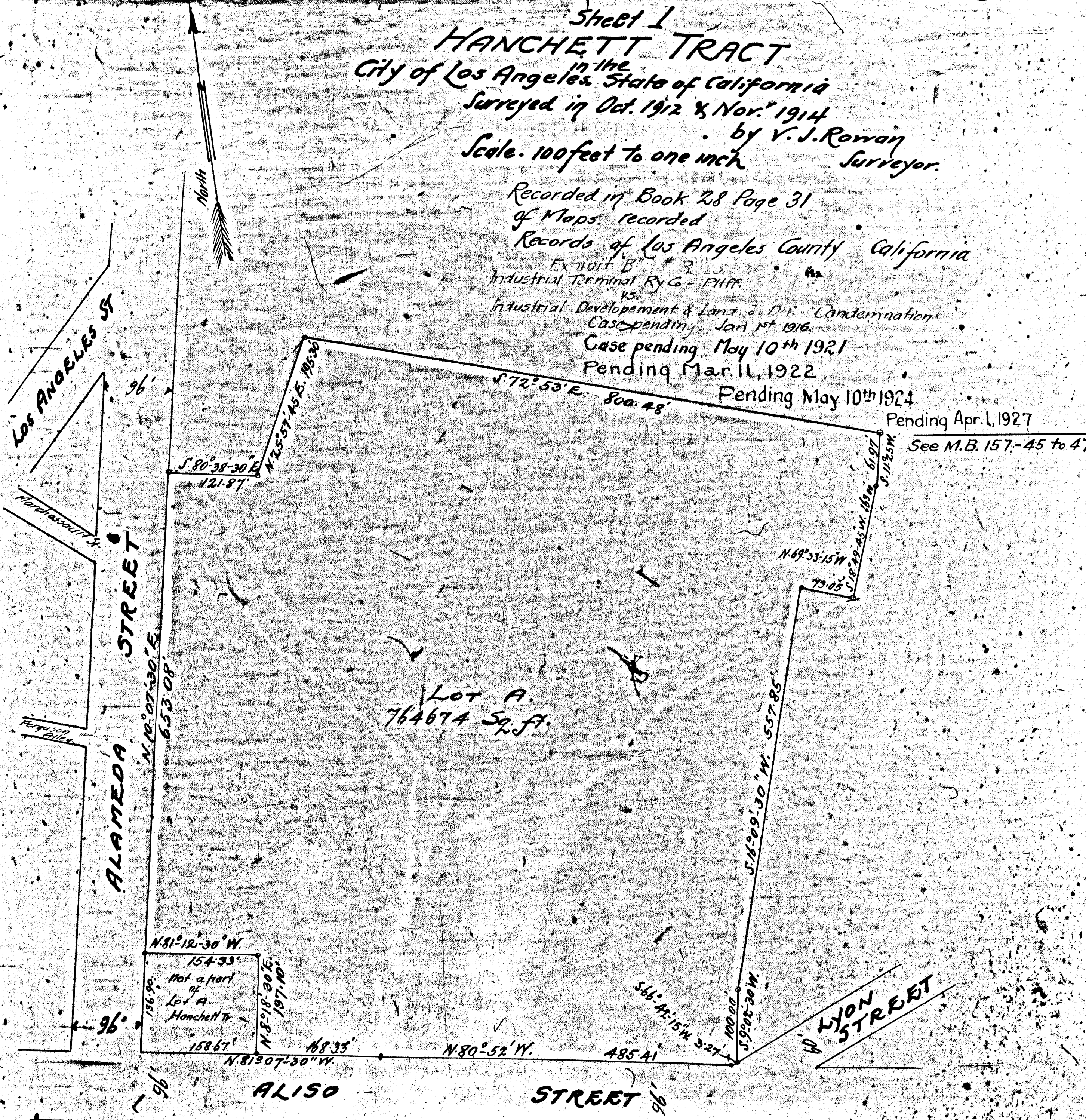
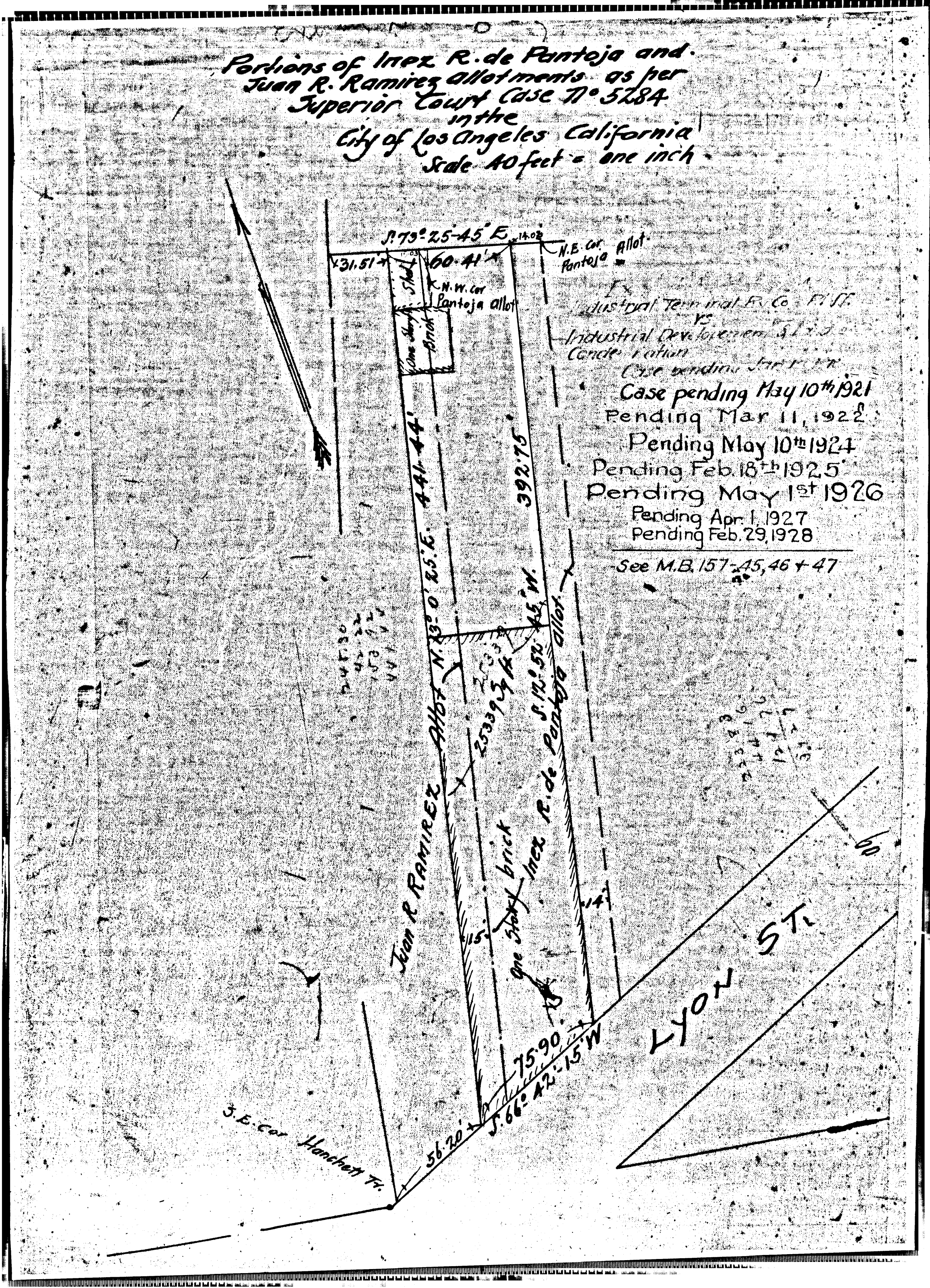


Sheet 1
HANCHETT TRACT
 in the City of Los Angeles, State of California
 Surveyed in Oct. 1912 & Nov. 1914
 by V. J. Rowan
 Scale. 100 feet to one inch
 Surveyor.

Recorded in Book 28 Page 31
 of Maps recorded
 Records of Los Angeles County California
 EXHIBIT B # 3
 Industrial Terminal Ry Co - Plaintiff
 vs.
 Industrial Development & Land Co. D.F. Condemnation
 Case pending Jan 1st 1916.
 Case pending May 10th 1921
 Pending Mar. 11, 1922
 Pending May 10th 1924
 Pending Apr. 1, 1927
 See M.B. 157-45 to 47



Portions of Inez R. de Pantoja and
 Juan R. Ramirez allotments as per
 Superior Court Case No. 5284
 in the
 City of Los Angeles California
 Scale 40 feet = one inch



N.E. cor. Pantoja allot.
 Industrial Terminal Fr. Co. Fr. Fr.
 Industrial Development Fr. Fr.
 Condemnation
 Case pending Jan. 1, 1921
 Case pending May 10th 1921
 Pending Mar. 11, 1922
 Pending May 10th 1924
 Pending Feb. 18th 1925
 Pending May 1st 1926
 Pending Apr. 1, 1927
 Pending Feb. 29, 1928
 See M.B. 157-45, 46 + 47

CF 839
 2