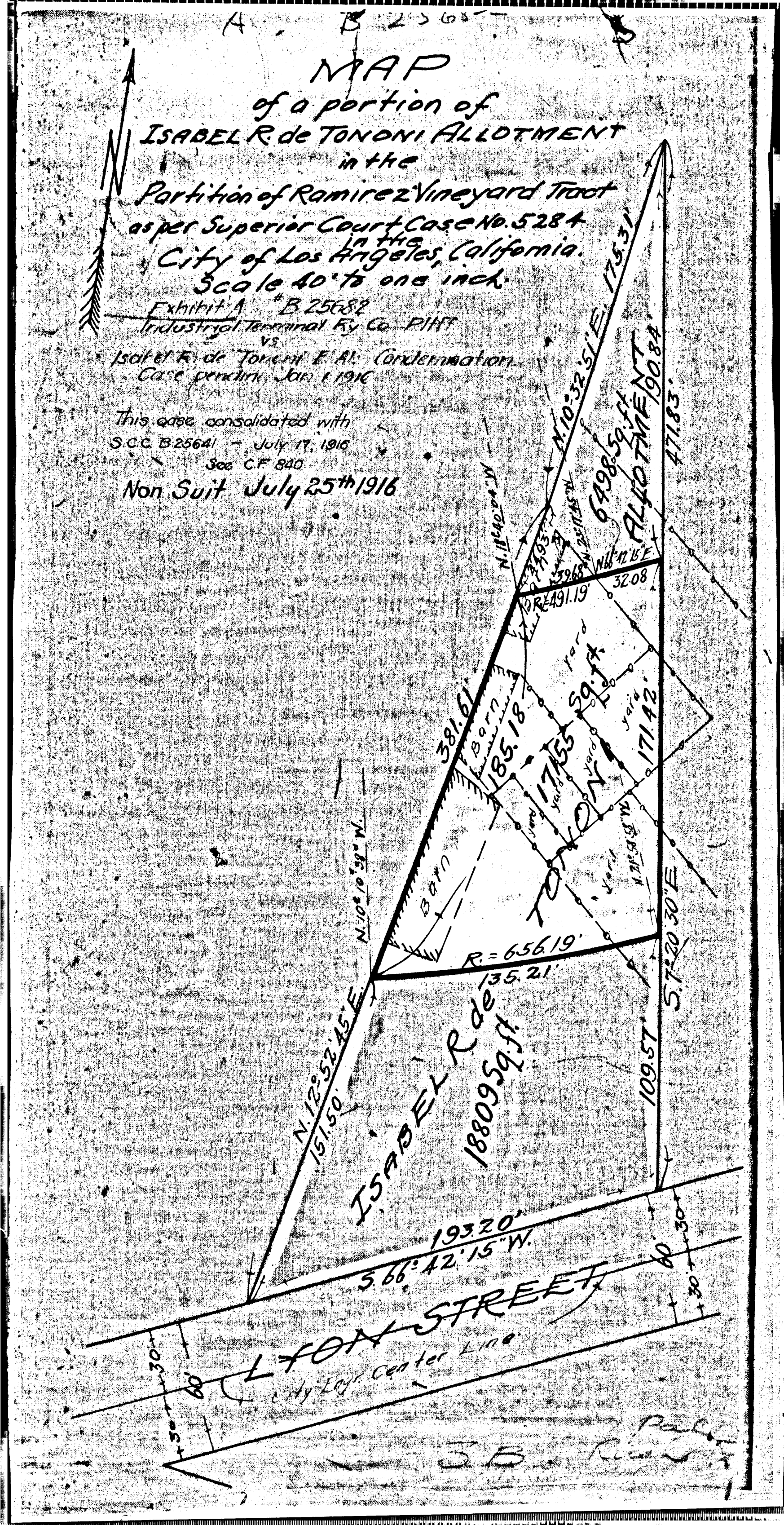


A. B. 2563

MAP
of a portion of
ISABEL R. de TONONI ALLOTMENT
in the
Partition of Ramirez Vineyard Tract
as per Superior Court Case No. 5284
in the
City of Los Angeles, California.
Scale 40' to one inch.

Exhibit A # B 25682
Industrial Terminal Ry Co. PHTP
vs
Isabel R. de Tononi & Al. Condemnation
Case pending Jan 1 1916

This case consolidated with
S.C.C. B 25641 - July 17, 1916
See C.F. 840
Non Suit July 25th 1916



1845

J.B. [Signature]