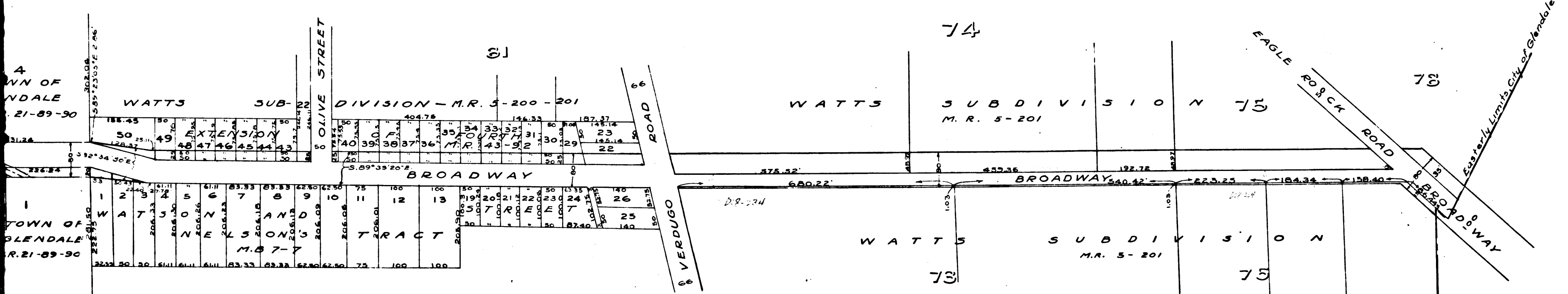


1
C.F. 845 -



MAP
 SHOWING PARCELS OF LAND
 TO BE CONDEMNED FOR THE OPENING
 AND WIDENING OF
 BROADWAY
 FROM THE EAST LINE
 OF EVERETT STREET TO THE
 EASTERLY BOUNDARY LINE OF THE
 CITY OF GLENDALE
 EDWARD M. LYNCH CITY ENGINEER
 SCALE 1"=200'

C.F. 845
 #3 27073
 City of Glendale - Prop.
 - vs -
 H. L. Barnwell, et al - Defs.
 - Condemnation.
 Final Judgment for Plff. Dec. 6-1917.
 " " Book 422-P. 98.
 D: 25-147
 O.R. 4765-217 D: 59-82.

2

C.F. 845 -

