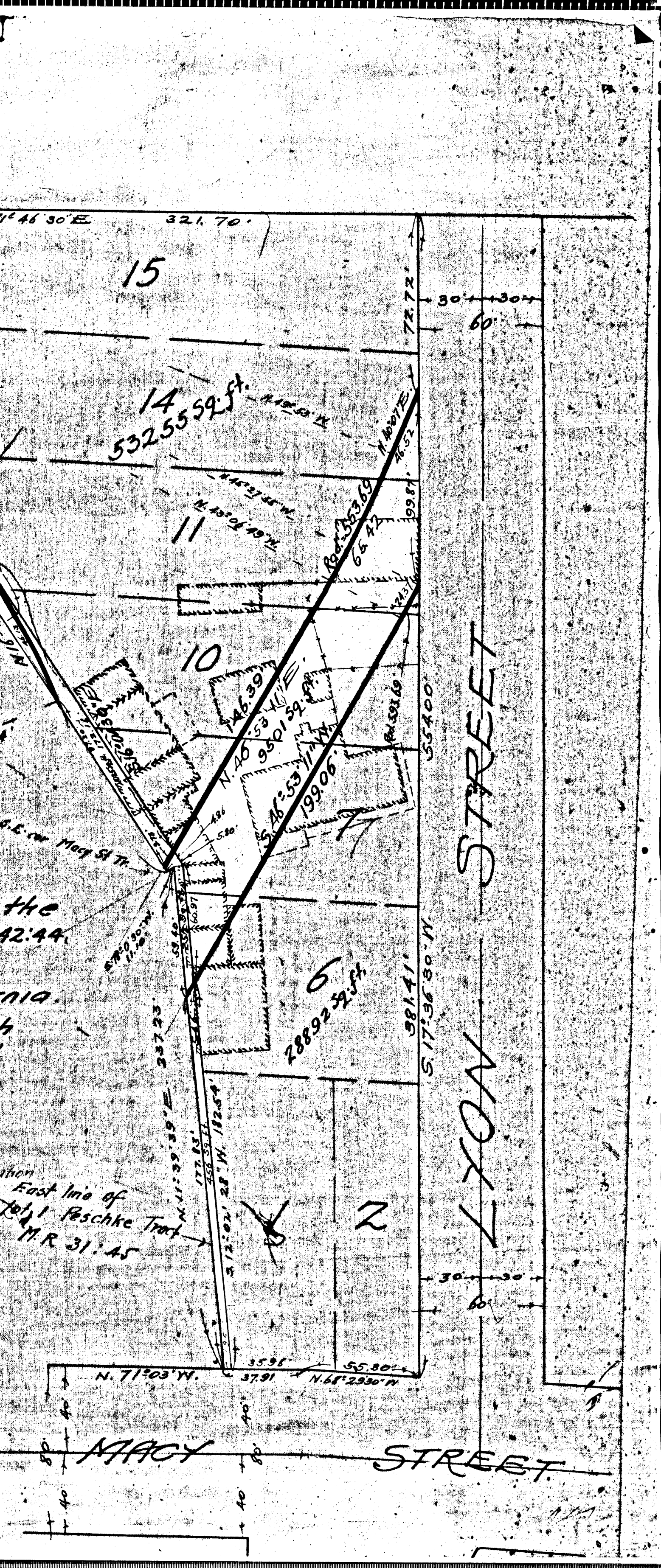


MAP
of a portion of
SUBDIVISION of a portion of the
HOOPER VINEYARD TRACT, M.R. 42:44,
in the
City of Los Angeles, California.
Scale - 40ft. to one inch

- A
- B 27784
- Industrial Terminal Ry. Co. PHIT.
- Case pending Jan 19th
- Case pending May 10th 1921
- Pending Mar 11, 1922
- Pending May 10th 1924
- Pending Feb 18th 1925
- Pending May 1st 1926
- Pending Apr 1, 1927
- Pending Feb 29, 1928
- See M.B. 157-45 to 47



157-45