

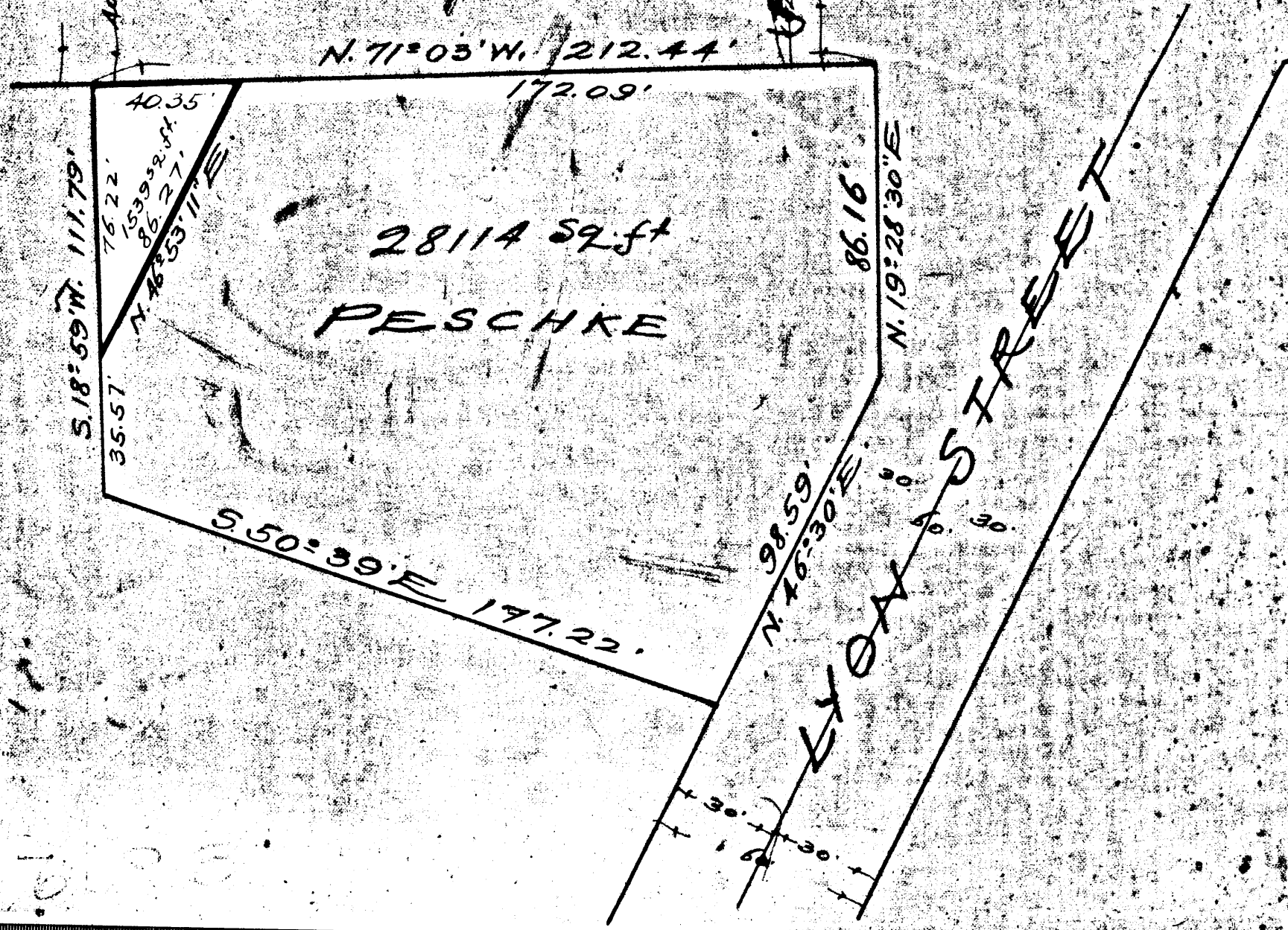
MAP
of a portion of
The Lot marked PESCHKE shown on map
of the PESCHKE TRACT, M.R. 31:45
in the
City of Los Angeles, California.

Scale 40 ft. to one inch.

Exhibit A B 27791
Industrial Terminal Ry. Co.
vs.
Industrial Development & Land Co. et al. Def.
Condemnation - Court pending Jan 1st 1921
Case pending May 10th 1921 Pending Mar 11, 1922

Pending May 10th 1924 Pending Feb 18th 1925
Pending May 1st 1926 Pending Apr. 1, 1927
Pending Feb. 29th 1928

MAGY STREET See M.B. 157-45 to 47



1852