

Exhibit A "P. 27702"  
 Industrial Terminal Ry Co. Plff.  
 vs  
 Industrial Development & Land Co. Etal. Def.  
 Condemnation Case pending Jan 1st 1916  
 Case Pending May 10th 1921  
 Pending Mar 11, 1922  
 Pending May 10th 1924  
 Pending Feb. 18th 1925  
 Pending May 1st 1926  
 Pending Apr 1 1927  
 Pending Feb. 29, 1928

See M.B. 157-45 to 47

N. 76° 12' 31" W

N. 71° 53' 52" W

N. 71° 11' 31" W

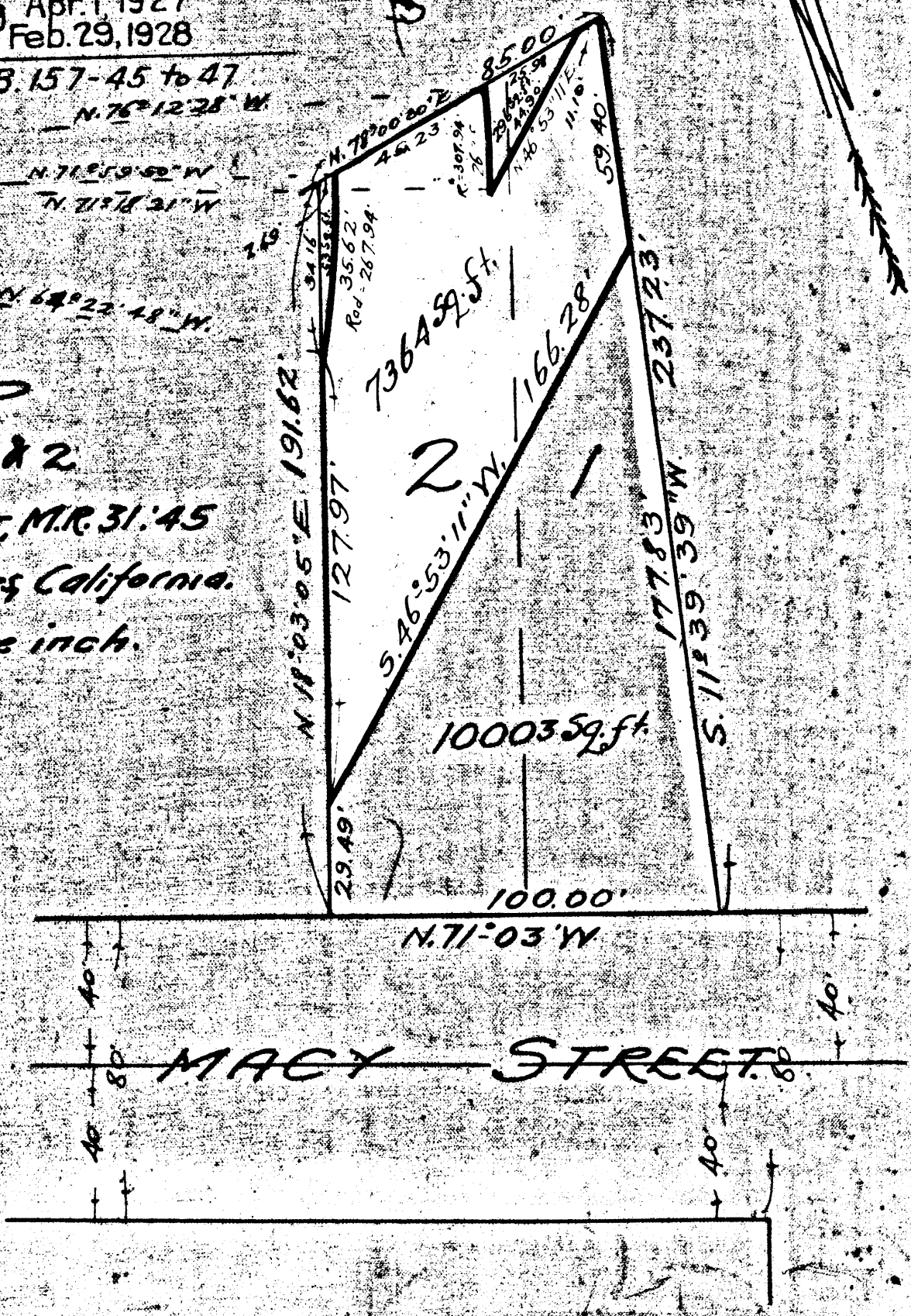
N. 14° 22' 48" W

MAP  
 of  
 Lots 1 & 2

PESCHKE TRACT, M.R. 31:45  
 in the  
 City of Los Angeles, California.  
 Scale 40 ft. to one inch.

A

B



17853