

10TH 957 957 10TH 50TH

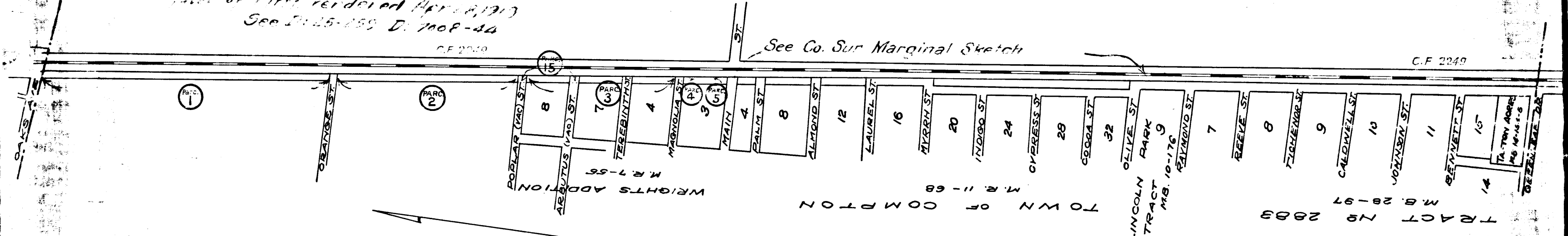
Brown notes are per final decree
Co. Sur. April 23rd 1920

MAP
SHOWING LAND SOUGHT TO
BE CONDEMNED FOR THE LAYING
OUT, OPENING AND WIDENING OF
ALAMEDA ST.
IN THE CITY OF COMPTON, CAL.
IN ACCORDANCE WITH ORDINANCE 103
EDWARD M. LYNCH CITY ENGINEER
Aug. 1915 Scale 1 in. = 600 ft

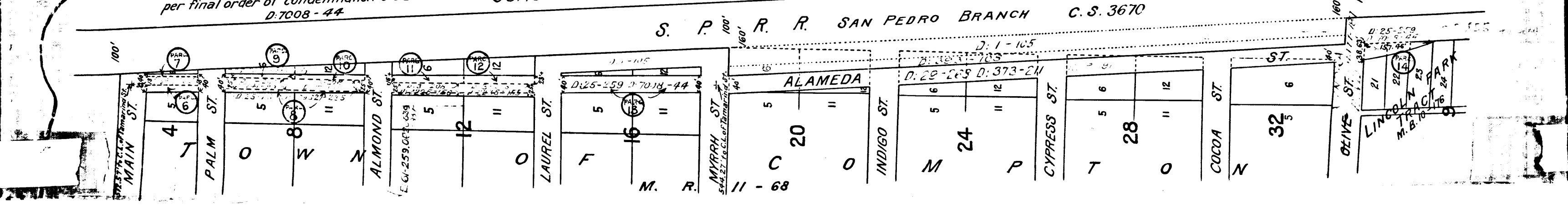
D:25-259 D:7008 44

City of Compton
City Engineer
For final order of condemnation in
favor of City rendered April 23rd 1920
See D:25-259 D:7008-44

See Co. Sur Marginal Sketch



Portion tinted in red on this marginal sketch
per final order of condemnation see D:25-259
D:7008-44
This Sketch made by Co. Sur. showing details of
Conditions at this point. Scale: 200' = 1 inch



C.F. 855