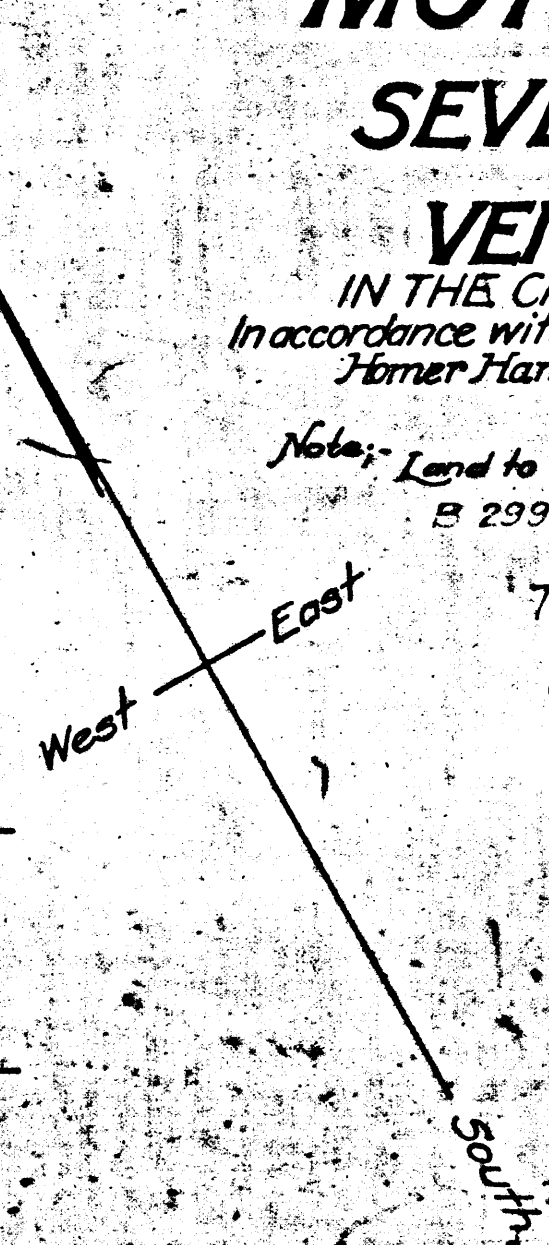


**MAP**  
 SHOWING LAND  
 TO BE CONDEMNED  
 FOR THE WIDENING OF  
**MOTT STREET**  
 BETWEEN  
**SEVENTH STREET**  
 AND  
**VENICE AVENUE**

IN THE CITY OF LOS ANGELES, CALIF.  
 In accordance with Ordinances Nos. 32666, 33010 (New Series).  
 Homer Hamlin, City Engineer. September, 1915  
 Scale 1 inch = 50 feet

Note: Land to be condemned shown colored red.  
 B 29959

The City of Los Angeles - D.H.A.  
 vs  
 Aleksay P. Meloserdoff, et al  
 Interlocutory Judgment Filed Mar 8, 1916



1786

L.S.B.  
 W.E.M.