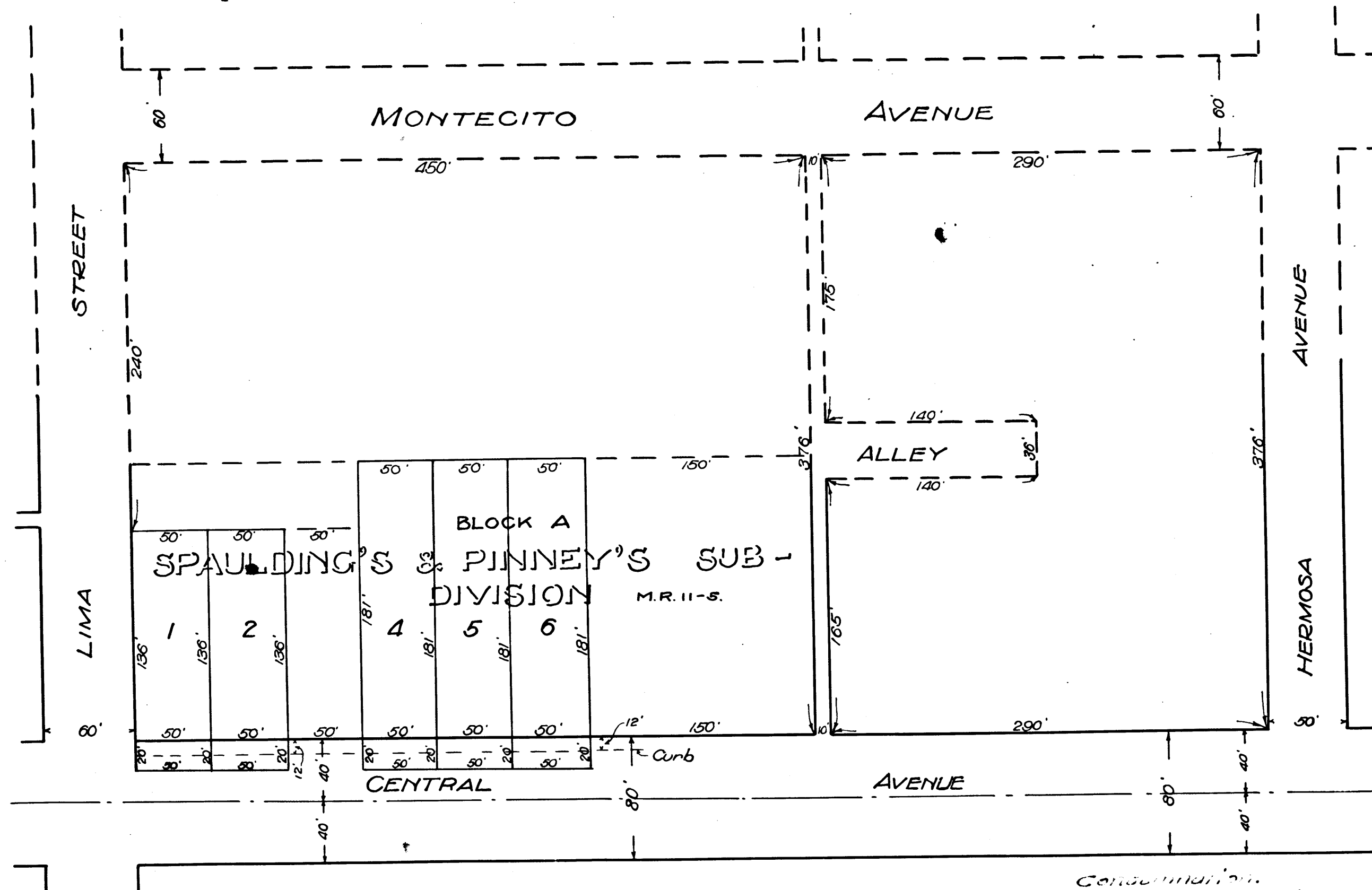


MAP  
 showing land to be condemned for the widening of  
 CENTRAL AVENUE  
 between HERMOSA AVENUE and LIMA STREET  
 City of Sierra Madre, California.  
 William F. Bixby City Engineer  
 October 1915 Scale 80 feet = 1 inch

EXHIBIT 'C'



(City of Sierra Madre  
 v. Wm.  
 Francisco et al.)

Condemnation.  
 Interlocutory judgment - Nov. 24, 1916 For Plff.  
 Case pending May 10<sup>th</sup> 1921.  
 Pending Mar 11, 1922  
 Pending May 10<sup>th</sup> 1924  
 Pending Feb. 18<sup>th</sup> 1925  
 Dismissed Sept. 18<sup>th</sup> 1916

C.F. 862

9 S 6

VEMCO  
 PASADENA, CAL.

50TH

9 S 7

VEMCO  
 PASADENA, CAL.

50TH