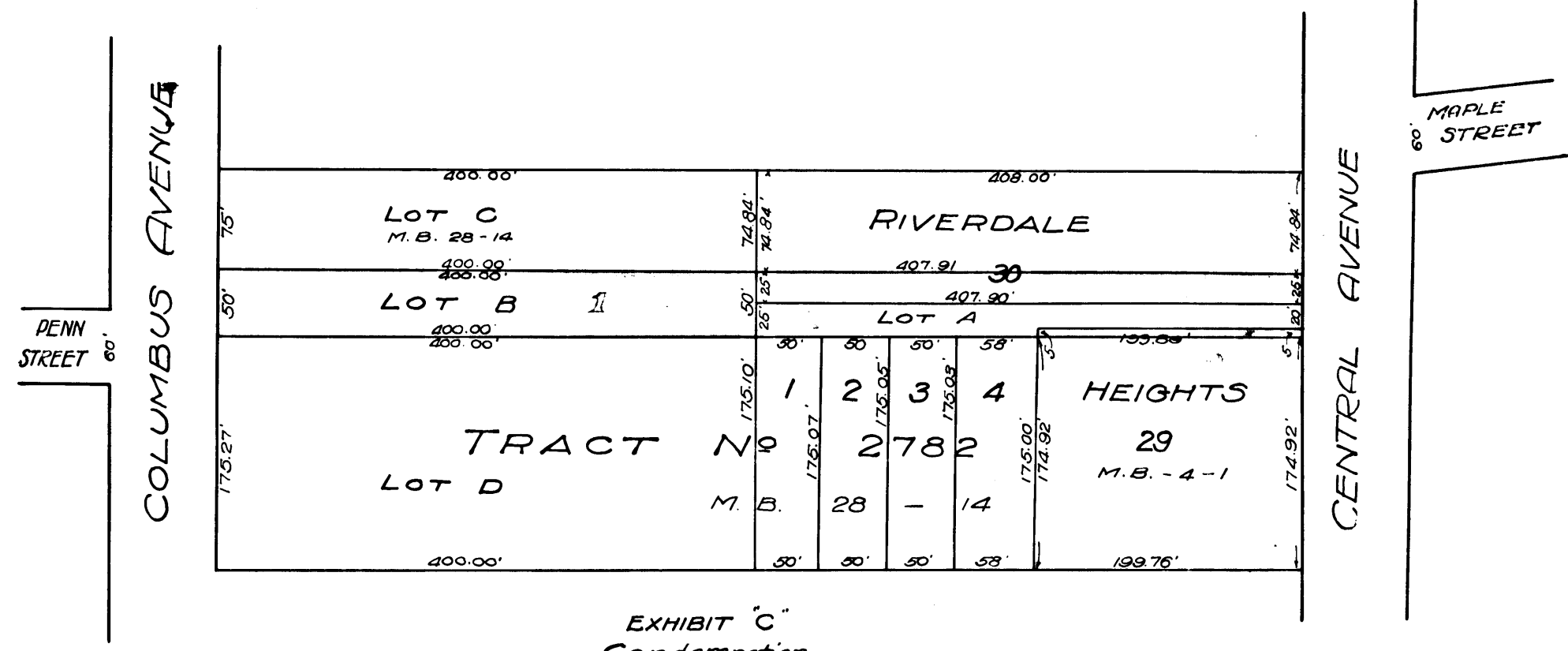


MAP  
 showing parcels of land to be condemned for the opening and widening of  
 PENN STREET  
 Edward M. Lynch City Engineer  
 Scale 1"=100'



C.F. 869

EXHIBIT "C"  
 Condemnation.  
 City of Glenview vs. Harold W. Porter et al.  
 Case pending July 1, 1920  
 Case pending May 10<sup>th</sup> 1921  
 Pending Mar. 11, 1922  
 Pending May 10<sup>th</sup> 1924  
 Pending Feb. 18<sup>th</sup> 1925  
 Pending May 1<sup>st</sup> 1926  
 Pending Apr. 1, 1927  
 See D:30-207 D:6415-303

54740