

West City Boundary Line of The City of Los Angeles Established by Ordinance No. 19444 of 1948

AVENUE

WESTERN

ONE HUNDRED EIGHTY-SECOND

ONE HUNDRED NINETIETH

1290'

660'

1002.24'

MCDONALD

103

85

88

1790'

630'

630'

630'

630'

630'

630'

630'

630'

630'

630'

630'

630'

630'

630'

630'

630'

630'

630'

630'

1290'

660'

942.24'

1002.24'

942.24'

ONE HUNDRED EIGHTY-SIXTH STREET

86

87

TRACT

104

Miscellaneous Records Book 15, Pages 21 and 22.

942.24'

1002.24'

942.24'

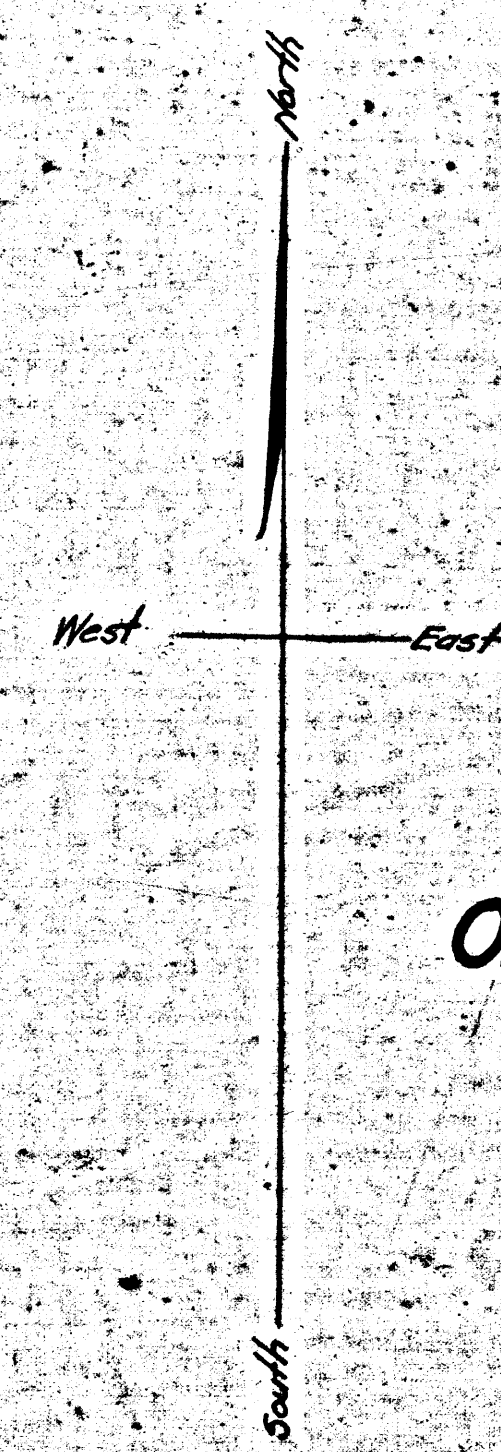
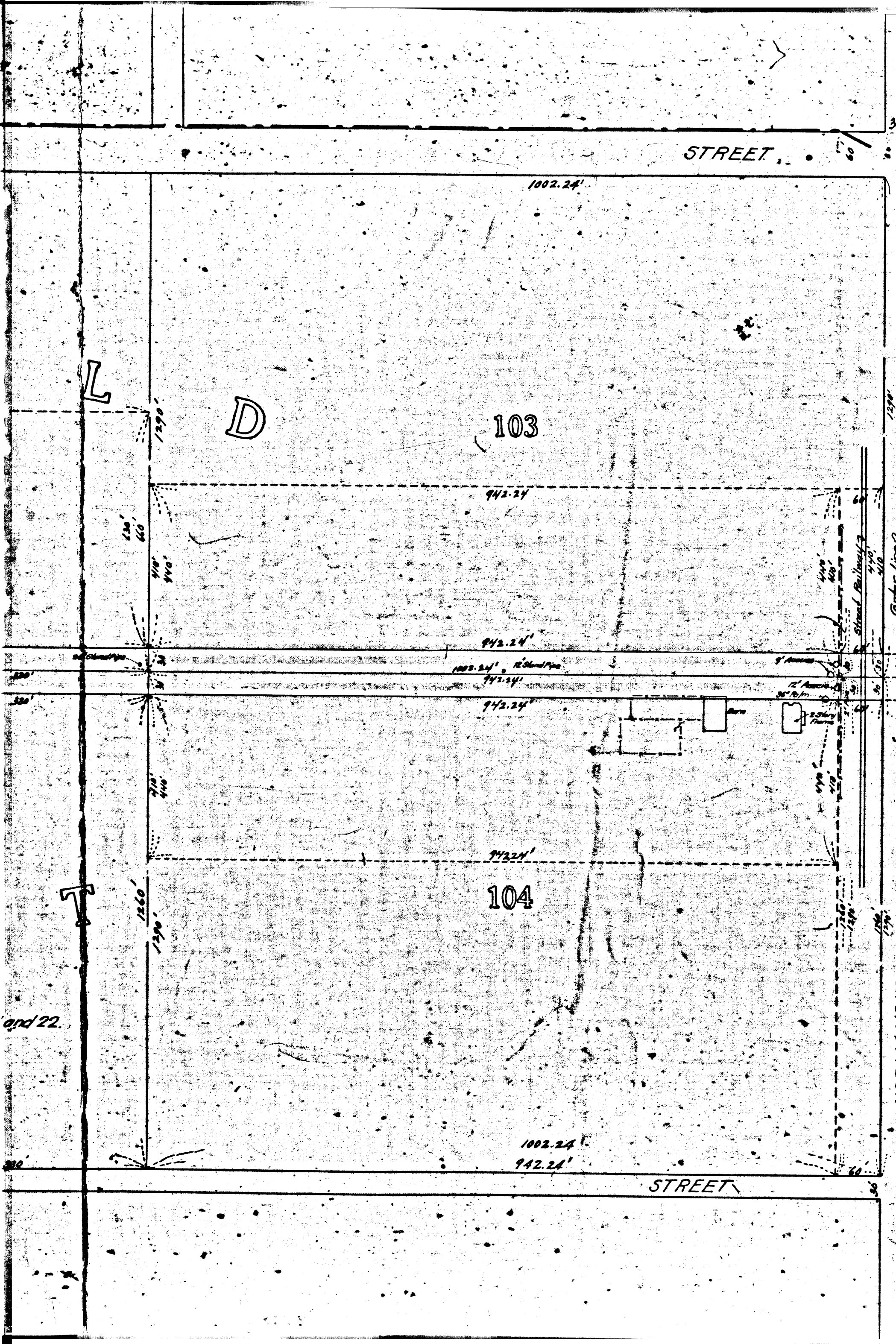


EXHIBIT C

MAP
 SHOWING LAND TO BE CONDEMNED
 FOR THE OPENING AND WIDENING OF
ONE HUNDRED EIGHTY-SIXTH STREET
 BETWEEN
NORMANDIE AVENUE
 AND
WESTERN AVENUE
 IN THE CITY OF LOS ANGELES

In accordance with Ordinances Nos. 33918 and 34229 (New Series),
 Homer Hamlin City Engineer June, 1916.
 Scale 1 inch = 100 feet.

Note:-
 Land to be condemned colored red.
 Dotted Lines and Figures show where actual
 holdings differ from the recorded subdivisions.

B 40130
 City of Los Angeles - Plaintiff
 vs
 Lulu M. Simpson - et al
 Pending - Sept. 1, 1916
 Interlocutory judgement ordered for Pltff. Mar 22-1920
 Pending Mar. 14, 1922
 Case partially Dismissed - Pending May 10-1924
 Pending Feb. 18th 1925
 Pending, Dismissed Oct 7-1925
 May 1, '25

East City Boundary Line