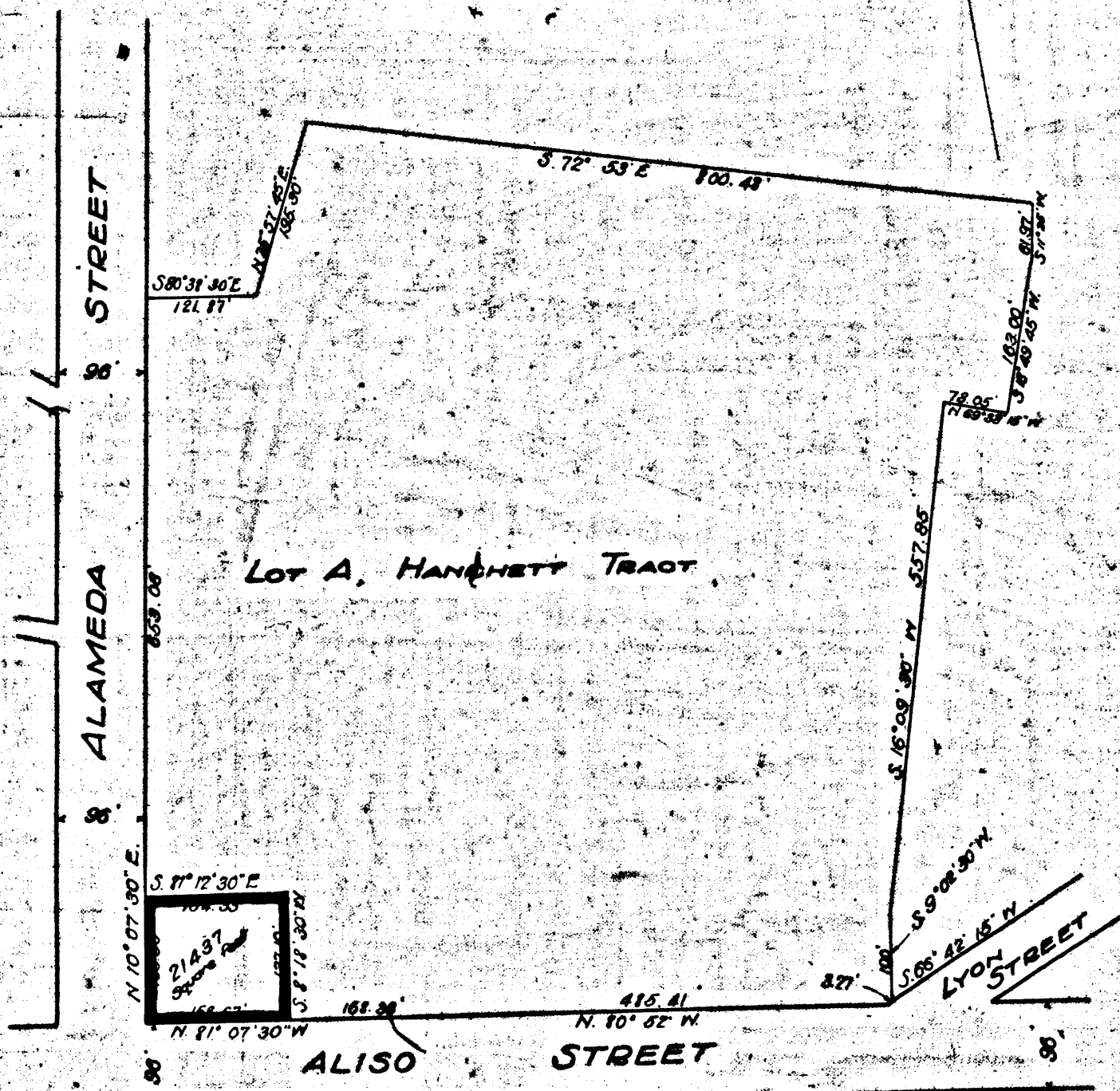


MAP
of parcel of land at the Northeast corner of
ALISO ST. & ALAMEDA ST
in the City of Los Angeles, California.
Scale 1" = 150' Five Courses March 1916



~~B-37222~~
Industrial Terminal Railway Co. PHFR
- vs -
City of Los Angeles - et al.
Case pending - Sept. 1, 1916

B40542 EXHIBIT "C"
Industrial Terminal Ry. Co. PHFR
- vs -
Isabel R. de Tononi - et al.
Case pending - Sept. 1, 1916
See C.F. 840, 841, 843 for additional maps filed in this case.