

EXHIBIT B

MAP of SANTA MONICA-SAWTELLE TRACT

Being Partly within and partly without the city of Santa Monica, also being partly within and partly without the City of Sawtelle, County of Los Angeles, State of California. Being a subdivision of that portion of the Rancho San Vicente y Santa Monica described as parcels No. 12, 13, 14 & 15 in the Interlocutory decree of the Superior Court of the State of California in Case No. B 25296, Fuller vs Coutts, et al.

Surveyed under direction of the Referees in Partition: W.H. Holabird, T.N. Carnfield and W.W. Mines, April to Sept. inclusive 1916 by V.J. Rowan, Surveyor. Scale = 300 ft. to one inch.

In the Superior Court of the State of California in and for the County of Los Angeles, Ysidora Coutts Fuller, Plaintiff

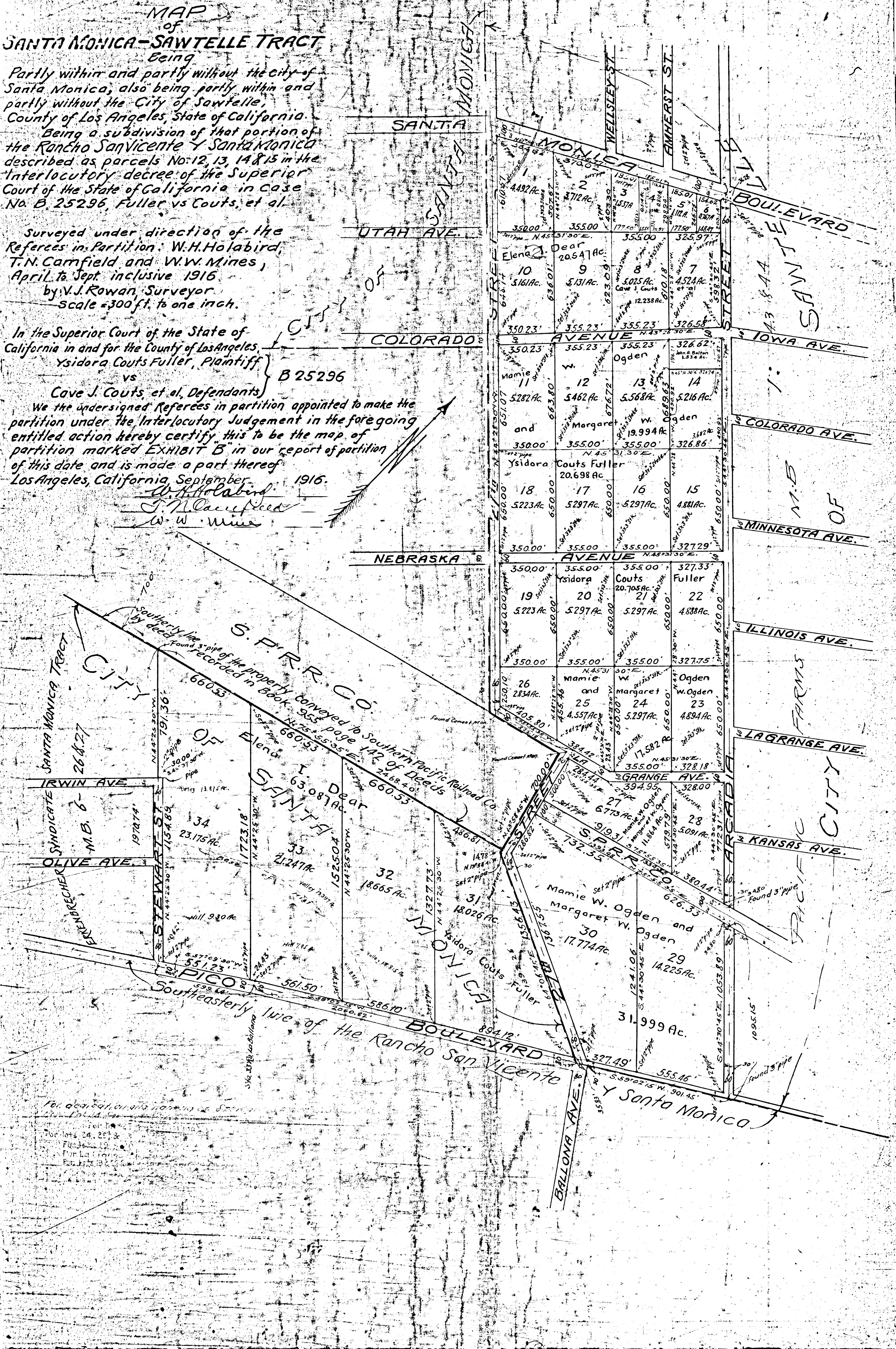
vs

Cave J. Coutts, et al., Defendants

We the undersigned Referees in partition appointed to make the partition under the Interlocutory Judgement in the foregoing entitled action hereby certify this to be the map of partition marked EXHIBIT B in our report of partition of this date and is made a part thereof Los Angeles, California, September 1916.

W.H. Holabird
T.N. Carnfield
W.W. Mines

B 25296



For description of the property conveyed to Southern Pacific Railroad Co. see page 142 of Dec. 15, 1905, recorded in Book 660, 53.